

StoreSafe Quick Start Guide



GE Interlogix

Introduction

Welcome to the StoreSafe Quick Start Guide. This guide helps you set up and use your StoreSafe. It includes step-by-step instructions and helpful illustrations that show you how to connect the components of a surveillance system, program basic recording functions, view live and recorded video images, record images to a CD and more.

The Quick Start Guide is for basic setup and operation. For advanced functions, you can find more detailed information in the *User Manual*.



TIP:

You'll find special items like Tips and Cautions in the page margins. These items make setup and basic operation easier.

TIP:

If you have a problem setting up or operating your StoreSafe, try these solutions, in this order:

- 1) Re-read the Quick Start Guide
- 2) Read the corresponding section of the *User Manual*
- 3) Call Technical Support:

From 6 a.m. to 5 p.m. (Pacific time)

If calling from outside the United States:
011-1-541-754-9134
If calling from within the United States:
800-469-1676

From 5 p.m. to 6 a.m. (Pacific time)

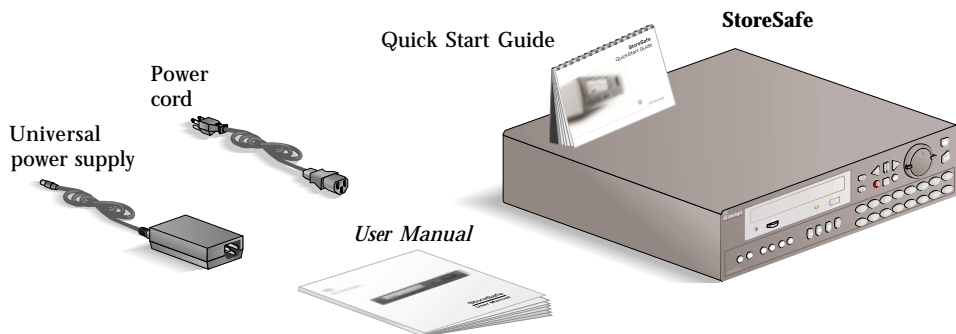
541-740-3589

Information in this document is subject to change without notice.

© 2003 GE Interlogix. All rights reserved.

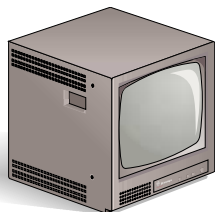
StoreSafe Package Contents

The following items are used for basic setup and operation. Items not shown here are for advanced functions—refer to the *User Manual* for information on these items.



Additional system components

A basic surveillance system can also include a monitor, recordable CD (CD-R), one or more cameras, and connection cables.



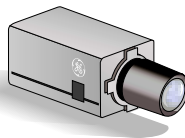
Surveillance monitor



Coaxial cable



CD-R



Surveillance camera

CAUTION:

Power—You must use a stable power source that falls within the rated voltage of the 12 VDC power supply. If your power source might experience surges or dips, use an uninterruptible power supply (UPS).

CAUTION:

Installation Area—Your StoreSafe needs space around it for ventilation. Make sure the fans and vents on the sides of the unit are not obstructed. Install your StoreSafe in a place where the temperature is always between 0 and 40 °C (32 and 104 °F) and has normal humidity (between 10% and 80%). Don't install the StoreSafe on top of a hot piece of equipment, and always leave space between rack-mounted equipment. Don't install the StoreSafe near a water source or anywhere that it will be exposed to moisture.

CAUTION:

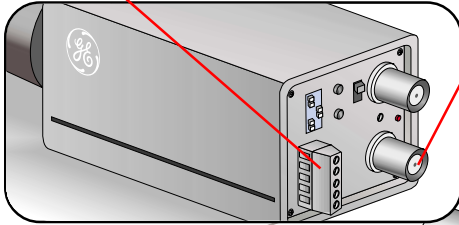
Stacking Equipment—You can place other equipment on top of the StoreSafe, but only if it weighs less than 35 lb (16 kg).

Connecting and Powering Up

Here are the connections you will use for functions described in this guide:

Camera back panel

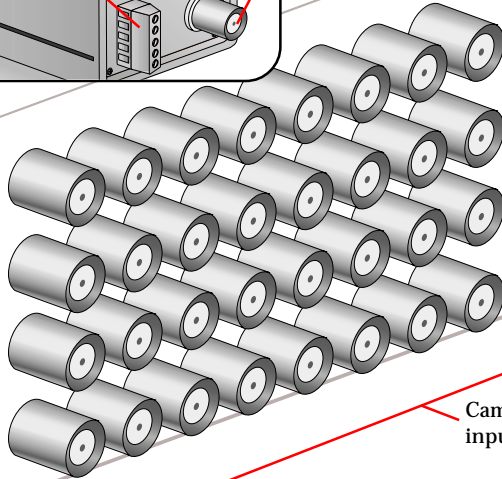
Power connection



Video output

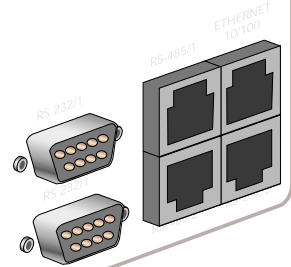
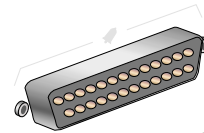
StoreSafe back panel

Composite monitor A output



Power connection

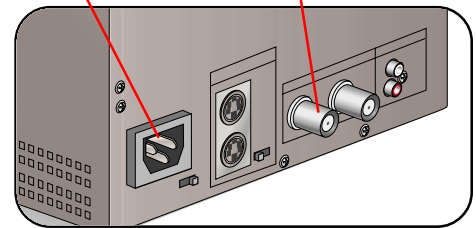
Camera inputs



Monitor back panel

Power connection

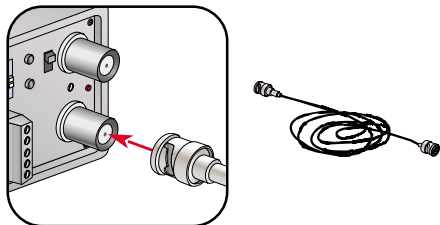
Video input



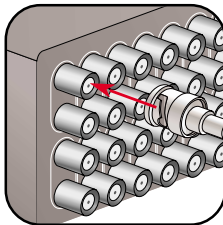
Connecting and Powering Up

Start by connecting your StoreSafe to the monitor and camera(s).

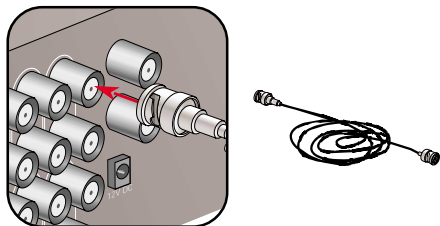
- 1 Connect the coaxial video cable to the video output on the camera.



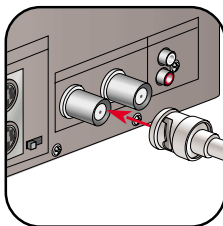
- 2 Connect the coaxial camera cable to the top Camera 1 input on the StoreSafe.



- 3 Connect the coaxial monitor cable to the monitor A output on the StoreSafe.



- 4 Connect the coaxial monitor cable to the video input on the monitor.



TIP:

Connection—Depending on the model, you can connect as many as 4, 10, or 16 cameras to your StoreSafe. Follow the same instructions for each additional camera.

TIP:

Connection—You can connect to either of the camera inputs for each camera. The second input can be used to send the camera signal to other devices, if necessary.

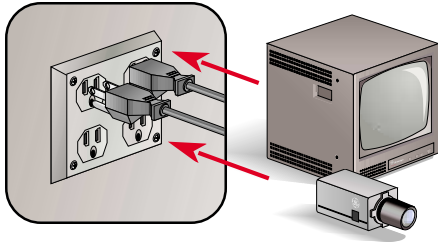
TIP:

Connection—To connect additional components such as keypads or network connections, see the *User Manual*.

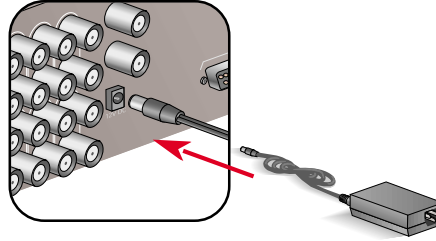
Connecting and Powering Up

To power up your system, you need one electrical outlet for the StoreSafe, one for the monitor, and one for each connected camera. Power up your system **in the following order**:

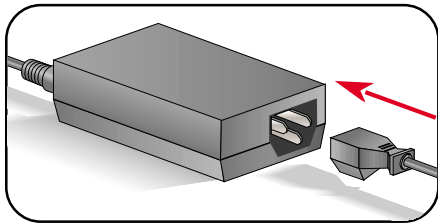
- 1 Plug the monitor and camera power cords into the outlets.



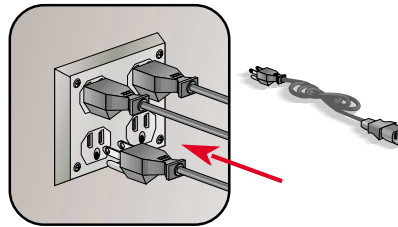
- 2 Plug the single-prong end of the StoreSafe power cord into the power connection on the back of the StoreSafe.



- 3 Plug the other end of the StoreSafe power cord into the outlet on the StoreSafe power supply.



- 4 Plug the StoreSafe power supply cord into the outlet.



TIP:

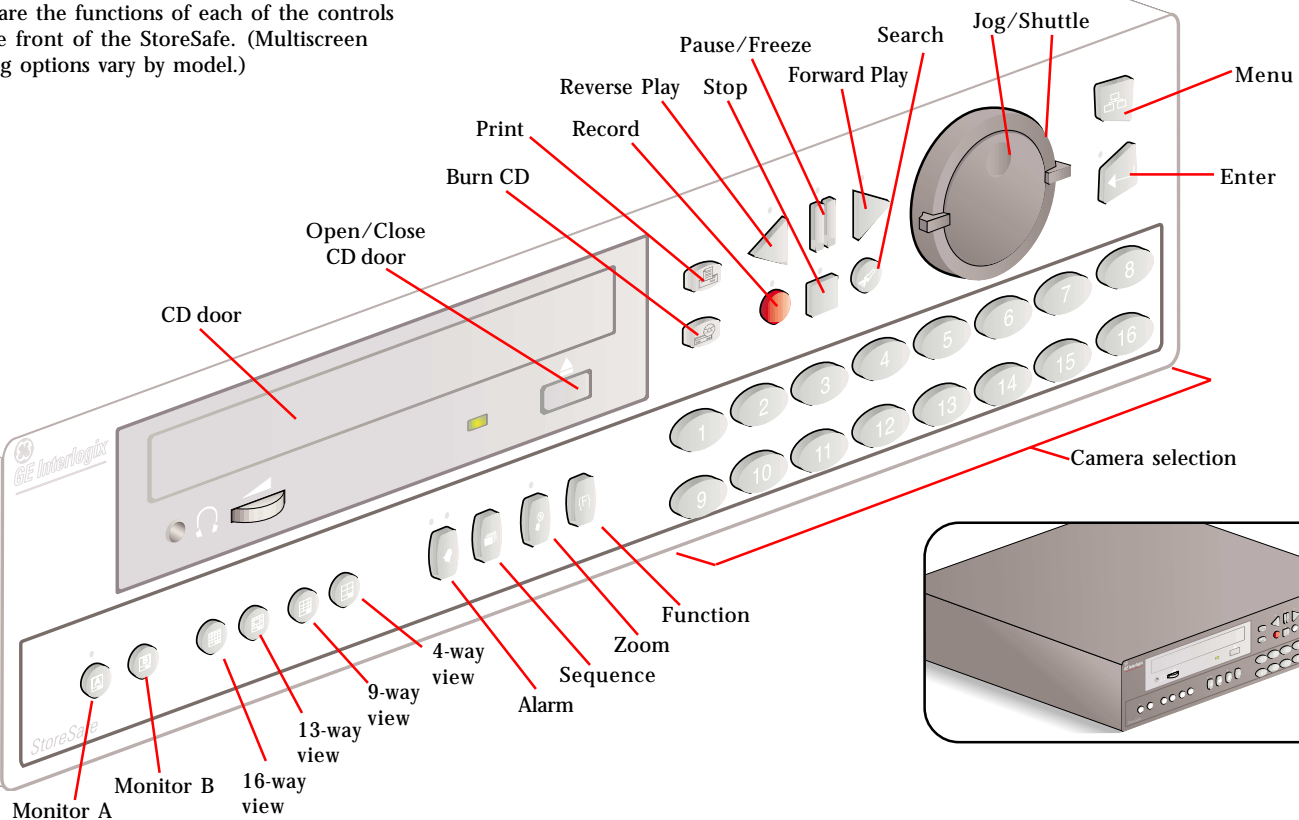
Powering Up—When you plug the StoreSafe power supply into an outlet, the StoreSafe automatically detects all connected cameras. The StoreSafe shows which version of software is installed, then shows a display of live views from each connected camera and automatically begins recording.

CAUTION:

Powering Up—For European electrical systems, use the 220 V power cord included with your StoreSafe. Make sure other components, such as cameras and monitors, have the proper electrical plugs as well.

System Controls

Here are the functions of each of the controls on the front of the StoreSafe. (Multiscreen viewing options vary by model.)

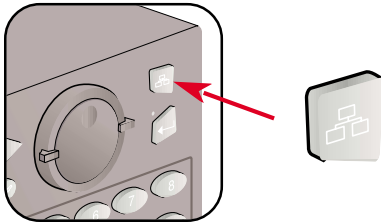


System Controls

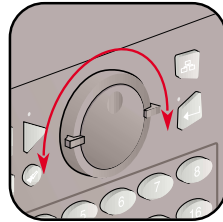
Using Jog, Shuttle, Menu, and Enter

To navigate the menus and program your StoreSafe, use the Menu and Enter buttons and the Jog/Shuttle.

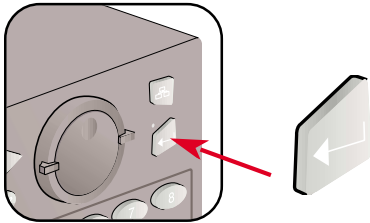
The Menu button brings up the Main menu and enables you to move from submenus back to the Main menu.



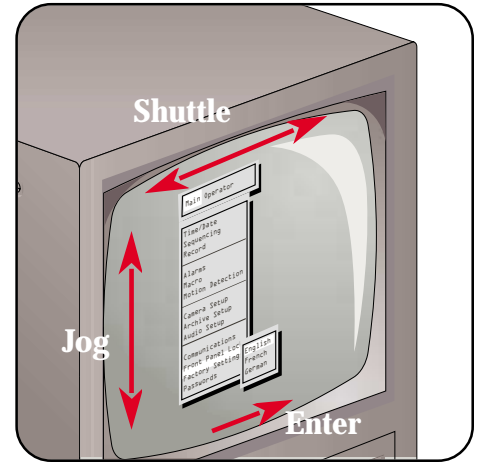
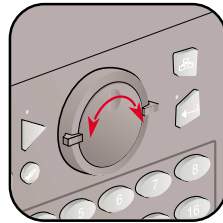
The Shuttle is the outside ring. Use it to move between menus and select some settings. To operate it, twist it in either direction.



The Enter button brings up submenus and confirms settings.



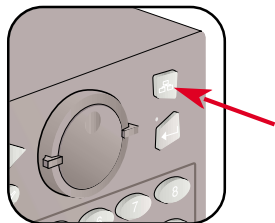
The Jog is the inner dial. Use it to select menu items and some settings. To operate it, place your finger in the round indentation and rotate it in either direction.



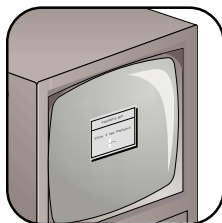
Initial Setup

To access the Main menu and begin setup, follow these steps:

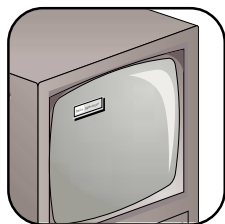
- 1 Press the Menu button.



- 2 Enter the installer password by using the number buttons.
For 4-camera models, enter **3444**.
For 10- and 16-camera models, enter **3477**.



- 3 The Main and Operator menu headings are the first menu you see.



Factory Defaults

Before you program your StoreSafe, return all settings to the factory defaults. To do this:

- 1 Jog to Factory Settings in the Main menu and press Enter.
- 2 Enter the Factory Default password: for 4-camera models, **4111**; for 10- and 16-camera models, **8111**.

The StoreSafe reboots, reverting all settings except time, date, and IP address to factory defaults. The StoreSafe beeps when resetting is complete.

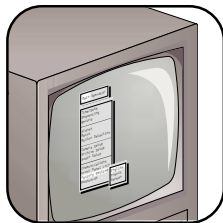
Settings	
Record Quality:	High
Event Settings:	Event and TL
Pre Event Duration:	02
Record Mode:	Continuous
Motion Detection:	Enabled
setup parameters:	Active
sensitivity:	5
relay output:	None
link to event:	Yes
Camera Titles:	Camera 01, Camera 02, etc.
Camera AGC:	50%
Cameras:	Enabled
RS232 Port 1:	57600 Baud
RS232 Port 2:	19200 Baud
RS485:	Network address 001
Ethernet:	Enabled
POTS:	Disabled

Initial Setup

Choose a Language

For a language other than English:

- 1 Jog to Factory Settings in the Main menu and press Enter.
- 2 For 4-camera models, enter **1414** and press Enter. For 10- and 16-camera models, enter **5415** and press Enter.
- 3 Jog to select a language and press Enter.

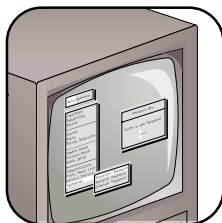


Custom Passwords

The StoreSafe comes with preset Installer and Operator passwords. The Installer password gives access to all menu functions. The Operator password gives access to only the Operator and SystemView menus.

To change the preset passwords:

- 1 Jog to Passwords in the Main menu and press Enter.
- 2 Jog to the password you wish to change and press Enter.
- 3 Use the number buttons to enter a new password and then jog to OK and press Enter.
- 4 Reenter the password, jog to OK, and press Enter.
- 5 Press Menu to exit.



CAUTION:

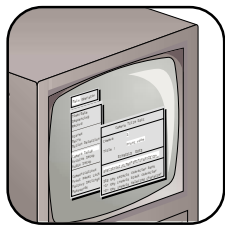
Password—When you set custom passwords, you cannot revert to the default passwords. If you forget your password, you must send the StoreSafe back to the factory to be reset.

Initial Setup

Camera Titles

To change the title that shows on the monitor for each camera:

- 1 Jog to Camera Setup in the Main menu and press Enter. Camera Titles is highlighted; press Enter.
- 2 Jog to Edit Titles and press Enter. Camera 1 and its title shows.
- 3 Press Enter again to highlight the title for Camera 1; the character bank appears in the middle of the screen.
- 4 To change the first letter of the title, jog to the character you want and press the number 2 button. Repeat for each new letter, using the number 1 button for blank spaces.
- 5 For additional cameras, use the shuttle to select a camera number.
- 6 When you're done, press Enter, jog to OK, and press Enter again. Press Menu twice to exit to the Main menu.

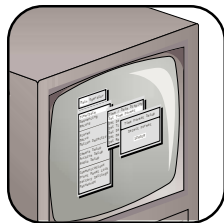


Time and Date

To set the time format:

- 1 Jog to Time/Date in the Main menu and press Enter.
- 2 Set Time will be highlighted. Press Enter.
- 3 Press Enter again to move to hours, and jog to select the hour, using the 24-hour time format.
- 4 Shuttle to move to minutes and jog to select. Do the same for seconds.
- 5 Press Enter when you're done, then jog to OK and press Enter. Press Menu to exit.

To set the date, use the same process as for time.



TIP:

Date Setup—The StoreSafe automatically selects the day of the week based on the date you enter.

Daylight-saving Time

To automatically match daylight-saving time changes:

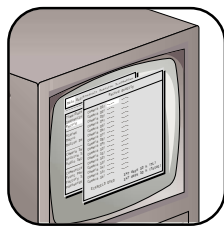
- 1 Jog to Time/Date in the Main menu and press Enter.
- 2 Jog to Set Region and press Enter.
- 3 Shuttle to USA and jog to Time Zone.
- 4 Shuttle to your time zone.
EST equals GMT minus 05:00
CST equals GMT minus 06:00
MST equals GMT minus 07:00
PST equals GMT minus 08:00
- 5 Jog to OK and press Enter. Press Menu to exit.

Record Settings

Record Speed

To set the record speed for each camera:

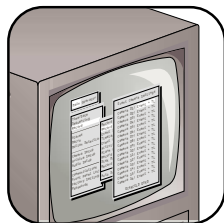
- 1 Jog to Record in the Main menu and press Enter.
- 2 Jog to Timelapse Record Rate and press Enter. Camera 1 is highlighted.
In this screen you choose the record rate for all connected cameras. The maximum rate for one camera is 30 pictures per second (pps). For two or more cameras the maximum rate is 24 pps, divided among all cameras. The recording capacity of your StoreSafe shows at the bottom right of the screen—it will change based on the record speeds you select.
- 3 Shuttle to select a rate for Camera 1, jog to the next camera, and shuttle to select a rate for it.
- 4 Continue for all cameras and then jog to OK and press Enter.



Event/Timelapse Settings

To set the type of recording for each camera:

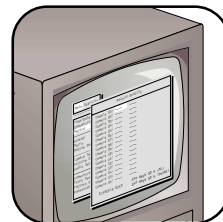
- 1 Jog to Record in the Main menu and press Enter.
- 2 Jog to Event/Timelapse Settings and press Enter. Camera 01 is highlighted.
- 3 Shuttle to change to TL (timelapse). This means cameras will record at the same speed at all times.
- 4 Jog to Camera 02. Using the same steps, change all connected cameras to TL.
- 5 When done, jog to OK and press Enter.



Record Quality

To set the record quality for each camera:

- 1 Jog to Record in the Main menu and press Enter.
- 2 Jog to Record Quality and press Enter. The record quality level for Camera 01 is highlighted.
- 3 Shuttle to change the level, and jog to additional cameras.
- 4 When the settings are the way you want them, jog to OK and press Enter.



TIP:

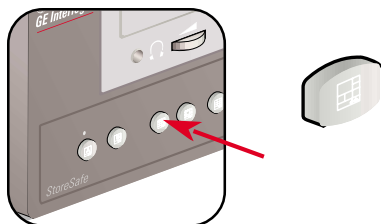
Record Lock—To prevent anyone else from changing record settings, jog to Record Lock in the Record menu and press Enter. Jog to On and press Enter. This means the installer password is necessary to stop recording or to change settings.

Live Viewing Options

This section shows you basic live and playback viewing options and how to conduct a basic search for video images. For advanced operation, see the *User Manual*.

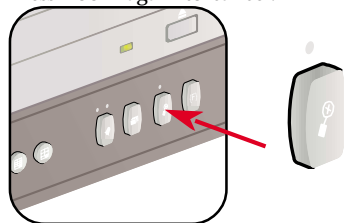
Multiscreen Views

Press any multiscreen button. The monitor displays views beginning with Camera 1 and up to the total number of cameras chosen.



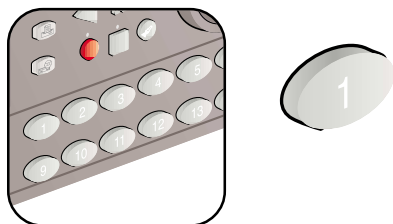
Zoom

While viewing a full-screen display, press the Zoom button for a 2X view. You can use the Jog and Shuttle to move within the zoomed view. (Note: The camera does not move.) Press Zoom again to cancel.



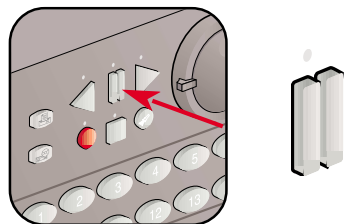
Full-Screen View

Press any number button to view a full-screen display of that camera.



Freeze

Press the Freeze button to freeze all camera views being displayed. Press Freeze again to return to a live view.



TIP:

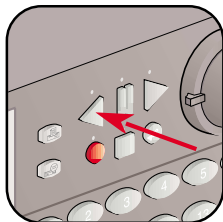
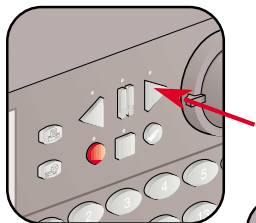
POS or ATM text—StoreSafe Advanced models can capture and store POS (point-of-sale) or ATM text associated with the video of any transaction. To capture this data, connect a GE Interlogix ProBridge interface unit to your StoreSafe.* You can then view associated POS or ATM text by pressing any camera number button three times.

**Contact your GE Interlogix vendor for information on ProBridge and connection instructions.*

Playback Options

Forward Play

Press the Forward Play button. Playback is available only on monitor A. Press Forward Play twice and select a multiscreen view to see both live and playback options on monitor A. The monitor displays images from the beginning of the most recent recorded video, at the rate they were recorded. Press Stop to end playback.

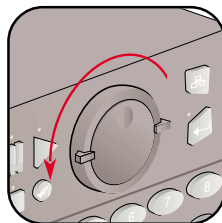
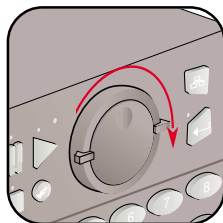


Reverse Play

Press the Reverse Play button. Monitor A displays images at the rate they were recorded. Press Stop to end reverse play, or press Forward Play to return to forward play.

Fast Forward

During forward or reverse playback, turn the Shuttle clockwise to speed up forward playback. The farther you turn the Shuttle, the faster the images play back.

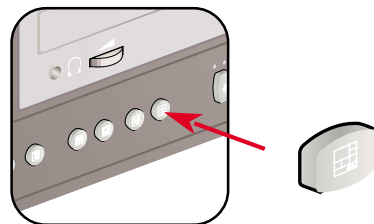


Fast Reverse

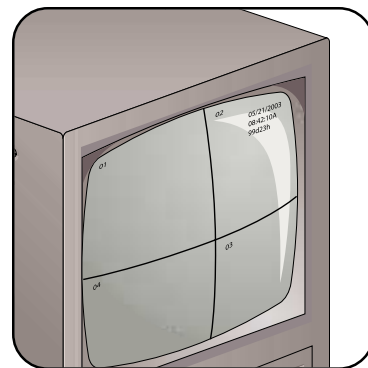
During forward or reverse playback, turn the Shuttle counterclockwise for fast reverse playback. The farther you turn the Shuttle, the faster the images play back.

Multiscreen Playback

Press any of the Multiscreen display buttons to activate a multiscreen display.



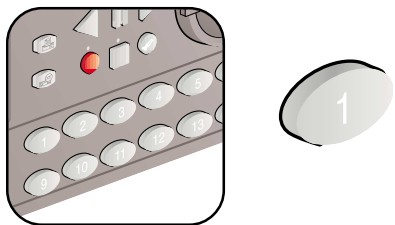
Here is an example of the 4-way view:



Playback Options

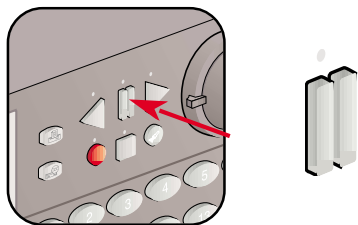
Full-Screen Playback

Press any camera number button for a full-screen playback of that camera.



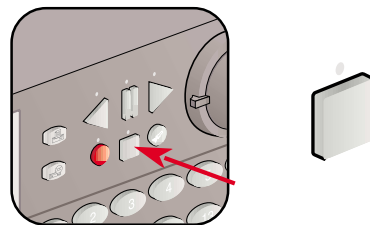
Freeze

Press the Freeze button to freeze all camera views being displayed. Press Freeze again to cancel.



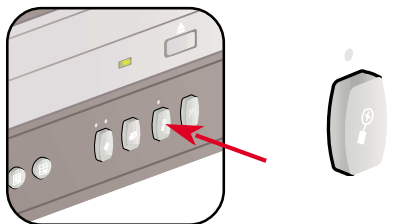
Stop

Press Stop to end playback and return to live viewing.



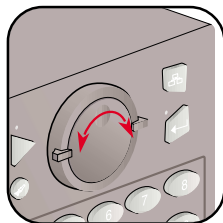
Zoom

Select the full-screen display for any camera and then press Zoom for a 2X view. You can use the Jog and Shuttle to move within the zoomed view. (Note: The camera does not move.) Press Zoom again to cancel.



Frame Advance

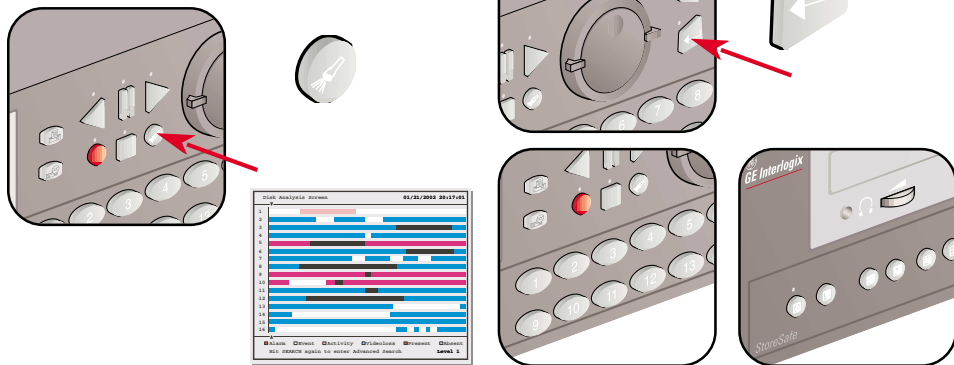
During Freeze mode, jog to view frames individually in either direction.



Searching Recorded Video

To search for recorded video:

- 1 Press Search. The Disk Analysis screen appears on the monitor. This screen shows the recording pattern for each camera, by color. The graph shows a bar for each camera, going left to right from oldest recordings to newest. At the left of the graph, at both the top and bottom, are small cursors. In the top right corner of the graph is a time and date display. The time and date correspond to the cursor position.
- 2 Jog to move the cursors left and right along the bars; the time and date change to tell you when each section was recorded.
- 3 When you find a section you wish to view, press Enter and the video begins to play, starting from the date and time shown. Select a full-screen (press a camera number) or multiscreen (choose a multiscreen button) view, depending on what you want to see. While the video is playing, you are in playback mode and can use any of the functions described in Playback Options.
- 4 Press Stop to return to live viewing.



TIP:

Time and Date Display—Above and to the right of the Disk Analysis screen is a date and time window that shows the current date and time.

TIP:

Detail Level—Shuttle to expand the Disk Analysis display for more detail. The level of detail shows at the bottom right of the graph. Level 1 shows the least detail; Level 4 shows the most.

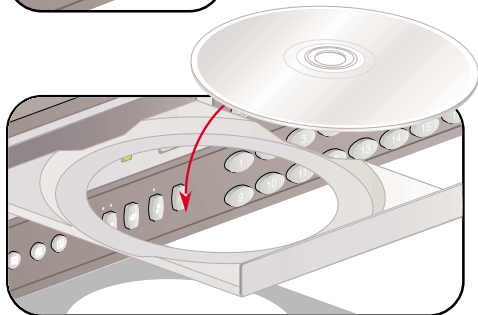
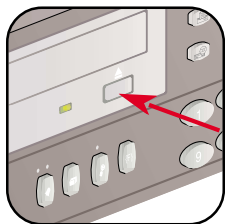
TIP:

Disk Analysis—To exit the Disk Analysis screen without viewing recorded video, press Menu.

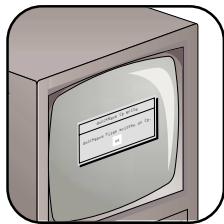
Recording Video to a CD

To record video images to a CD:

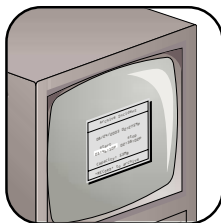
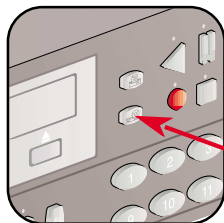
- 1 Push the Open/Close button on the CD tray. When the tray opens, insert a blank CD-R. Push the Open/Close button again to close the tray.



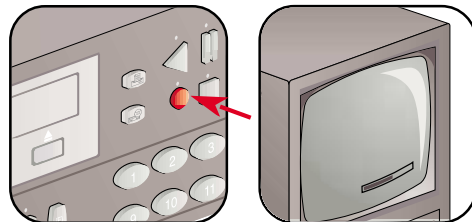
- 2 StoreSafe begins loading QuickWave software files to the CD so it can later be read by any PC with a CD drive. When QuickWave is done loading, the OK message is highlighted in green.



- 3 Press the Record CD button. Jog to select the start time of the video you want to record. Shuttle to Stop Time and jog to change it if needed.



- 4 When the start and stop times are set, press the red Record button. While StoreSafe records, the LED light on the CD tray blinks and a recording progress bar appears in the lower right corner of the monitor.
NOTE: While the selected video segment is recording, the monitor switches to a live camera view, but that view is not recorded.

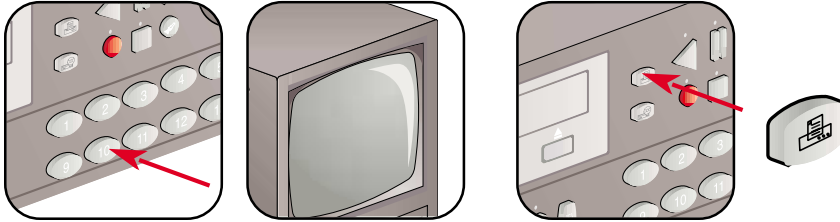


- 5 The recorded video on the CD may now be played on any PC with a CD drive, using the QuickWave software embedded on the CD.

One-Button Printing

To print an image:

- 1 Press the corresponding camera number to display a full-screen view of the image.
- 2 Press the Print button.



CAUTION:

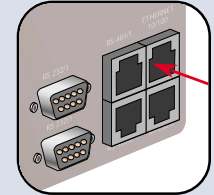
Printing—To use the print function you must have the following equipment:

- HP DeskJet 3820 printer
 - Hawking Print Server PN7127P
- Refer to the *User Manual* for further information.

CAUTION:

Printer Connection—

To print images, StoreSafe must be connected to the same local network as your print server. See the *User Manual* for important information.



TIP:

Print from 4-way display—If you press the Print button while viewing images in a 4-way display mode, StoreSafe will switch to the last selected full-screen camera view, freeze that image and send it to the printer.

Notes

Notes