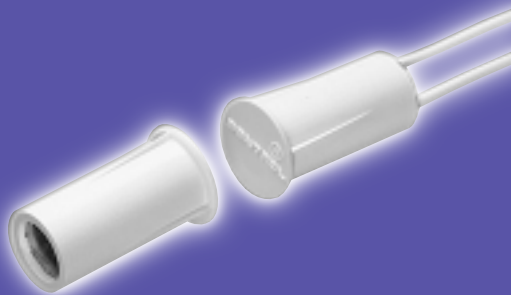




## GE Magnetic Contacts

### 1125 Series

*3/8" Diameter Stubby Press Fit with Wire Leads*



<b>Gap Distance</b>	<b>Closed Loop</b>
<i>Regular 1/4"</i>	1125
<i>Wide 3/4"</i>	1125W

<b>Color</b>	<i>White, Mahogany Brown</i>
<b>Quantity</b>	10

100% **TESTED**



1125-N



# 1125 Series

**3/8" Diameter Stubby Press Fit with Wire Leads**

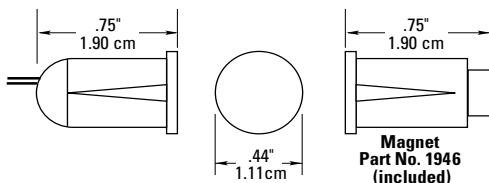
## Installation Instructions

### Drill Mounting in Wood

Drill 3/8" diameter holes 3/4" deep for both the contact and the magnet. Press them into their respective holes.

### Mounting in Aluminum Sliding Windows and Doors

Do not overdrill. Attach contact and magnet with RTV mounting compound or epoxy.



## UL Specifications

Part Number	Loop Type	Electrical Configuration	Gap Distance (Up To)*	Magnet Length
1125	Closed	N.O.	1/4"	3/4"
1125W	Closed	N.O.	3/4"	3/4"

\* Gap Specifications are nominal and may vary  $\pm 20\%$ . Gap Specifications are for switch to make. Break distance is approximately 1.1 to 1.5 times make.

\*\* European Union Specifications: 48 V AC/DC max, 0.5 Amp

### \*\* FORM A (1125, 1125W)

Voltage: 100 V AC/DC max

Current: 0.5 A max

Power: 7.5 W max

WARNING: Each electrical rating is an individual maximum and cannot be exceeded!

## C-UL Specifications

All Contacts: 30 VDC, 50 mA max

Gap Specifications:\*  
See UL Gap Specifications



**GE Interlogix**

www.GE-InterlogixSecurity.com

12345 SW Leveton Drive

Tualatin, OR 97062

Phone: 503-692-4052

USA & Canada: 800-547-2556

Technical Service: 800-648-7424

Faxback: 800-483-2495

2266 Second Street North

North St. Paul, MN 55109

Phone: 651-777-2690

USA & Canada: 800-777-5485

Technical Service: 800-777-2624