

2767 Series Adjustable High-Security ANSI Contact

PRODUCT DESCRIPTION AND FEATURES

The Contact shall be comprised of three independent form-C triple-biased reed switches, wired in SPDT configuration, with Alnico VII and Arnox V Magnets. It shall conform to the specifications for Class IV Preadjusted Balanced Magnetic Contacts. A supervised loop shall be provided. Contact shall have an actuating gap distance (make) of up to 0.4" (1.031 cm).

Contact and magnet shall fit into a standard ANSI cutout for mortise installation (1.25" x 4.875"). The contact and magnet housings shall be nominally 4.875" (12.38 cm) x 1.25" (3.175 cm) x 1.0" (2.54 cm) (L x W x D). Contact and magnet shall have face plates of 14 ga. stainless steel with mounting holes on 4.125" centers, countersunk for #8 flathead screws. The contacts and magnets shall be potted in polyurethane into their respective housings. Vinyl cable shall be potted into the contact housing. Contact shall be adjustable $\pm 0.3"$ from end to end, and the magnet shall be adjustable $\pm 0.25"$ from side to side. Contact and magnet shall be specified as Sentrol part number 2767.

IDEAL FOR PRISON DOOR APPLICATIONS

- The 2767 was designed specifically for prison door applications

ADJUSTABLE CONTACT AND MAGNET FOR LOOSE-FITTING DOORS

- For loose-fitting or misaligned doors, the 2767 contact can be adjusted both side to side and end to end by over 1/2 inch.

INSTALLATION INSTRUCTIONS

For doors with standard ANSI cutouts for mortise installation.

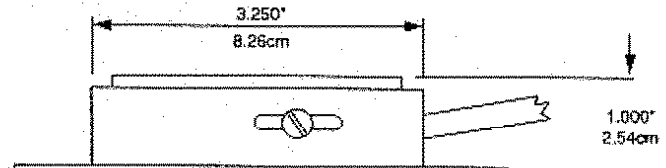
STEP 1: Remove blanks.

STEP 2: Connect contact leads to security loop per the electrical schematics below, and test the loop for continuity.

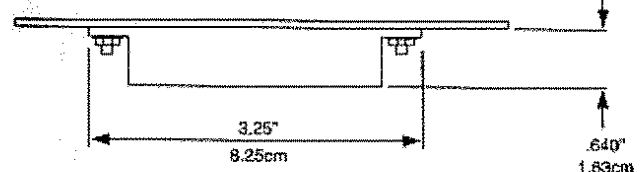
STEP 3: Install contact and magnets in respective positions and secure with screws. Contact and magnet should be facing and centered within .0625" both vertically and horizontally for proper alignment.

Note: If no cutout is provided, cut holes 1.25" W x 4.875" L x 1.0" D in both the door and jamb.

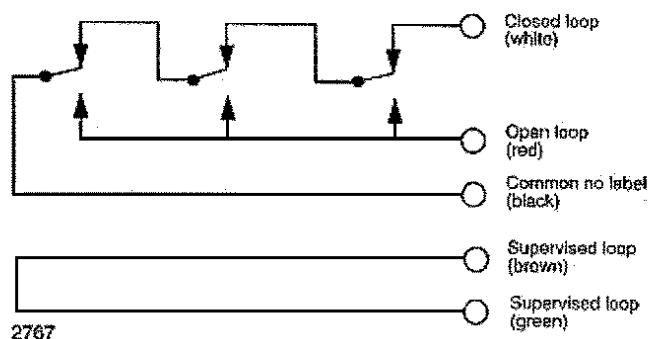
SWITCH ASSEMBLY



MAGNET ASSEMBLY



ELECTRICAL SCHEMATIC (With Magnet in Place)



PART NUMBER	LOOP TYPE	ELECTRICAL CONFIGURATION	GAP DISTANCE	LEAD TYPE
2767	Open or Closed	SPDT	Up To .375"	3' Vinyl Jacketed

Gap distances are nominal
make distance $\pm 20\%$

USA Corporate Office:

(503) 620-8540

FAX: (503) 684-9230

Toll Free (800) 547-2556

Canada Toll Free: (800) 253-5600

Litho U.S.A.



Printed on Recycled Paper

Made in the U.S.A.



©1992 Sentrol, Inc.

European Office:
2 Place des Hauts Tilliers
Parc des Barbanniers
92632 Gennevilliers
Cédex - FRANCE
Telephone: (33-1) 47 98 63 63
FAX: (33-1) 47 98 75 12

PK-0720 5291020 SEN
REV 6/92