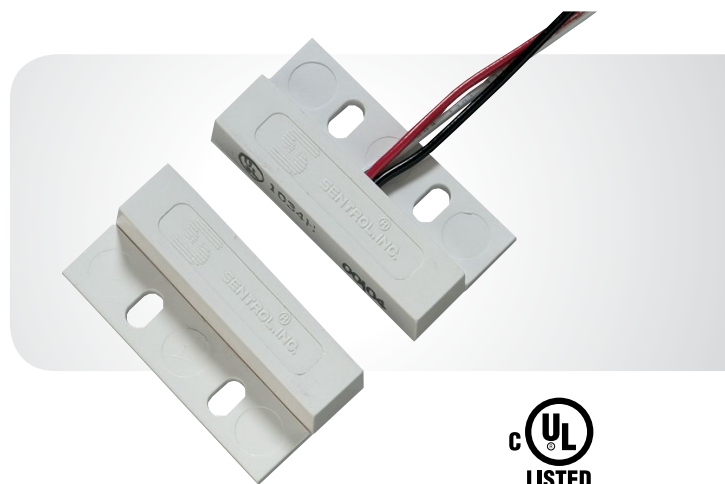


Miniature Flange Mount Contacts with Wire Leads

1032 Series



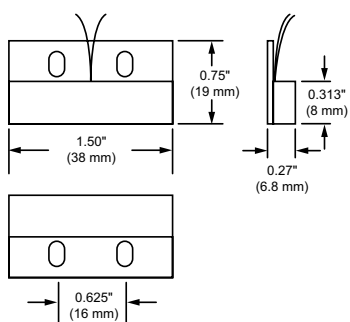
OVERVIEW

The 1032 miniature flange mount contact by Interlogix features a wider gap, which permits faster installation, accommodates greater misalignment, and works better on steel without time-consuming brackets. Choose the best mounting method for each application. Adhesive mounting strips and #4 mounting screws are included.

A wide gap model is available to protect against false alarms from loose-fitting doors and windows

These high performance magnetic contacts have been designed to facilitate installation and ensure durability and dependability. Rated at 10,000,000 cycles, every reed connection is hand soldered and each magnetic contact is 100% tested before leaving the factory.

Dimensional Diagram



Ordering Information

1032-N	Surface Miniature Flange Mount Contact w/Wire Leads, Closed Loop, White, 5/8" Gap Size
1032W-N	Surface Miniature Flange Mount Contact w/Wire Leads, Closed Loop, Wide Gap, White, 1" Gap Size
Accessories	
1937-N	Magnet, 1032 Series, White, Includes Magnet and Tape

STANDARD FEATURES

- Flanges for rapid mounting
- Convenient surface mounting
- Includes adhesive mounting strips and mounting screws
- Available wider gap distance helps prevent false alarms caused by loose-fitting doors
- UL/ULC Listed

Specifications

Voltage	100 VAC/VDC max.
Current	0.5 A max.
Power	7.5 W max.
Loop type	Closed
Electrical Configuration	Normally open
Gap Distance*	
1032	Up to 5/8 in. (16mm)
1032W	Up to 1 in. (25mm)
Temperature Range	-40°F to 150°F (-40°C to 65°C)
Response Time	1 msec max.
Lead Type	1 ft. (30cm) #22 wire
Housing	Flame retardant ABS plastic
NEMA Rating	1, 2, 3, 4, 4x, 5, 6, 12
Protection Class	IP 67
Color	White
Regulatory	UL634, ULC/ORD-C634

*Gap distances are nominal 'make' distance ± 20%. Gap Specifications are for switch to 'make'. 'Break' distance is approximately 1.1 to 1.5 times 'make'.