



## GE Magnetic Contacts

### R1125 Series

*3/8" Diameter Stubby Press Fit with Mini-Max*



<b>Gap Distance</b>	<b>Closed Loop</b>
Regular 1/2"	R1125
Wide 7/8"	R1125W

<b>Color</b>	White
<b>Quantity</b>	10

100% **TESTED**



604S

Connectors and Switches

R1125-N



0 46188 06994 1

# R1125 Series

## $\frac{3}{8}$ " Diameter Stubby Press Fit with Mini-Max

### Installation Instructions

#### Switch

- 1: Drill  $\frac{3}{4}$ " dia. hole  $\frac{1}{8}$ " deep for the contact.
- 2: Connect contact leads to security system loop and test for continuity.
- 3: Lightly coat the contact RTV mounting compound (GE part number 1905) and insert into respective hole.

#### Magnet

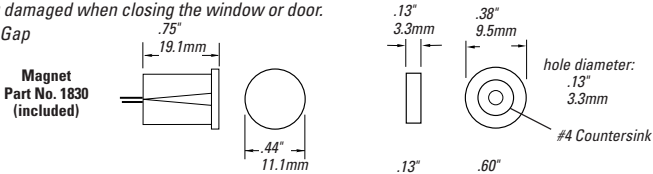
- 1: Mount magnet to double-sided tape (included) and affix to window frame.
- 2: Or, if using stainless steel screw (included), drill  $\frac{1}{16}$ " dia. (using magnet center hole as a guide) and mount using #4 x  $\frac{1}{2}$ " stainless steel screw (included). Use caution if using screw other than the one provided, as it will effect the gap performance.
- 3: Care should be taken not to over tighten screw to avoid damage to magnet or stripping hole.

#### Recess/Flush Mount Magnet

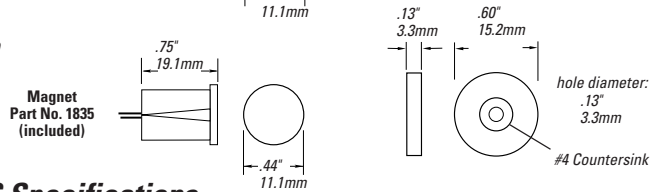
- 1: Drill  $\frac{7}{16}$ " dia. hole (standard gap) or  $\frac{5}{8}$ " dia. hole (wide gap) by approximately  $\frac{1}{8}$ " deep .
- 2: Coat magnet with RTV silicon adhesive and mount into hole.

NOTE: When surface mounting magnet be sure there is enough clearance to prevent the magnet from becoming damaged when closing the window or door.

#### Standard Gap



#### Wide Gap



### C-UL-US Specifications

Part Number	Loop Type	Electrical Configuration	Gap Distance
R1125	Closed	N.O.	$\frac{1}{2}$ "
R1125W	Closed	N.O.	$\frac{7}{8}$ "

\*\* European Union Specifications: 48 V AC/DC max, 0.5 Amp

#### \*\* FORM A (R1125, R1125W)

Voltage: 100 V AC/DC max

Current: 0.5 A max

Power: 7.5 W max

WARNING: Each electrical rating is an individual maximum and cannot be exceeded!

### C-UL Specifications



GE Interlogix