

KALATEL



Digiplex IV™

Programming Software

Installation and Operation Manual

© 2001 Kalatel, a division of Interlogix, Inc.

All Rights Reserved.

ANY KALATEL SOFTWARE SUPPLIED WITH KALATEL PRODUCTS IS PROPRIETARY AND FURNISHED UNDER LICENSE AND MAY BE USED OR COPIED ONLY IN ACCORDANCE WITH THE TERMS OF SUCH LICENSE.

This document contains proprietary information that is protected by copyright. No part of this document may be reproduced or transmitted in any form or by any means without the prior written permission of Kalatel, a division of Interlogix, Inc.

Digiplex™ product and logo are registered trademarks of Kalatel, a division of Interlogix, Inc.

The information contained in this document is subject to change without notice. Kalatel, in keeping pace with technological advances, is a company of product innovation. Therefore, it is difficult to ensure that all information provided is entirely accurate and up-to-date. Kalatel accepts no responsibility for inaccuracies or omissions and specifically disclaims any liabilities, losses, or risks, personal or otherwise, incurred as a consequence, directly or indirectly, of the use or application of any of the contents of this document.

For technical support before and after installation, call 800-469-1676.

Katelat offers 24-hr technical support 7 days a week.

Call:	Tech Support	800-469-1676 (6 a.m. – 5 p.m. PST Monday through Friday)
	Tech Support	541-740-3589 (all other times)
	Main	800-343-3358 or 541-754-9133
Fax:	Tech Support	541-752-9096 (available 24 hr a day)
	Main	541-754-7162
Web:	www.katelat.com	

1035478A / July 2001



TABLE OF CONTENTS

TABLE OF CONTENTS	3
PREFACE	4
Intended Use.....	4
Customer Support.....	4
Conventions Used in This Manual	4
1 INSTALLATION AND SETUP	5
2 SYSTEM SETUP.....	6
3 CAMERA SETUP	7
4 PROGRAMMING MONITORS.....	8
4.1 Monitor Setup	9
4.2 Arming Cameras	10
4.3 Monitors' Sequence Setup	10
5 GROUPS	12
5.1 Group Setup	12
5.2 Group Sequence Setup.....	13
6 DOWNLOADING AND UPLOADING	14
6.1 Downloading.....	14
6.2 Uploading	15
7 OPENING AND SAVING A DATABASE.....	16
7.1 Opening and Saving an Existing Database	16
7.2 Opening A New Database.....	16
8 PRINTING	17

PREFACE

NOTE: This installation should be made by a qualified service person and should conform to local codes.

This manual provides the installation and operation information for the Digiplex IV Programming Software. The software is for use with a properly-installed Digiplex IV Matrix Switching System. Users of the software must:

- Be familiar with Microsoft Windows
- Have a basic knowledge of CCTV systems and components
- Have read this manual

INTENDED USE

This product is not to be used for any purpose other than that for which it was designed. Refer to the product specification and users documentation.

CUSTOMER SUPPORT

For assistance in installing, operating, maintaining, and troubleshooting this product, refer first to this document and any other specifications or manuals provided. If this documentation does not address your specific question, please contact Kalatel Technical Support and Sales:

Kalatel, a division of Interlogix, Inc.

Call: 800-469-1676

Fax: 541-752-9096

NOTE: It is helpful to be at the equipment and ready with details before calling Technical Support.

CONVENTIONS USED IN THIS MANUAL

Boldface or button icons are used to highlight command entries. Menu options and system messages are represented as they appear on the display screen or on the equipment.

The following WARNING, CAUTION, and NOTE statements are used to identify potential hazards that could occur if the equipment is handled improperly.



WARNING!

Improper use of this equipment can cause severe bodily injury or equipment damage.



CAUTION!

Equipment damage may occur if care is not taken.

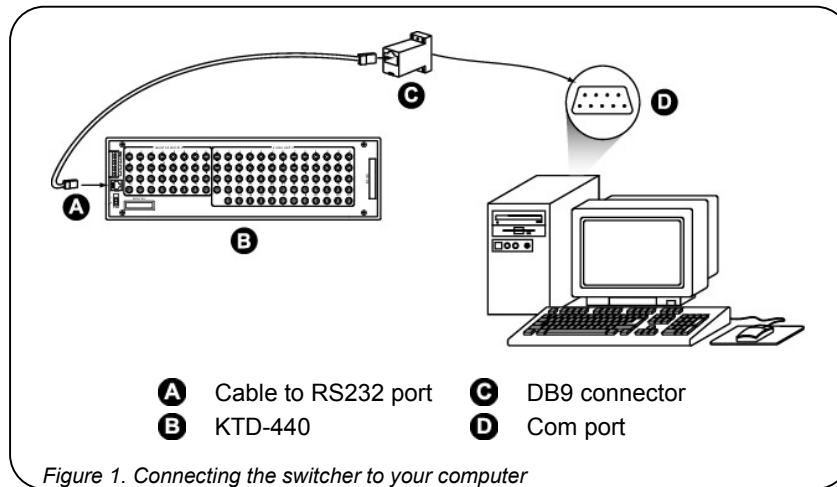
NOTE: Notes contain important information about a product or procedure.

*The electrical symbol is used for electrical warnings and cautions.

**The exclamation symbol is used for general warnings and cautions

1 INSTALLATION AND SETUP

- 1) Insert the Programming Software CD into your computer's CD ROM drive.
- 2) Click on the CD drive in Microsoft Explorer.
- 3) Click on **Install Matrix Switcher Programmer**. The Matrix Switcher Programmer Installer will open.
- 4) Follow the on-screen instructions.
- 5) Connect the supplied cable to the DB9 adapter. See **C** in Figure 1.
- 6) Connect the DB9 adapter to your computer's com port. See **D** in Figure 1.
- 7) Connect the cable to the RS232 port on the back of the KTD-440 or the front of the KTD-447 card.



2 SYSTEM SETUP

See Figure 1:

- 1) Open the software by selecting **Start→Programs→Kalatel→Matrix Switcher→KTD-411 Programming Software**. You may also double-click the desktop icon to open the software.
- 2) Click on **System Setup** in the menu bar to bring up the System Setup dialog box.
- 3) Enter the highest camera address and number of monitors in your system.
- 4) Click **Done**.

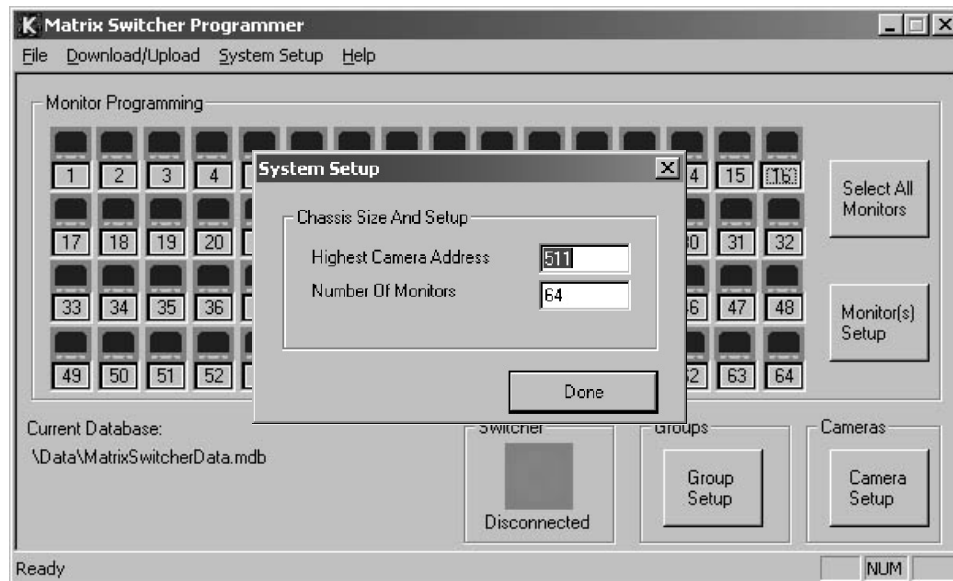


Figure 2. System Setup

3 CAMERA SETUP

- 1) Click on the **Camera Setup** button.
- 2) In the Camera Setup dialog box, click in the BNC Number field for any camera.
- 3) Enter the number of the BNC connector on the back of the chassis that the camera will be connected to (See Figure 3).

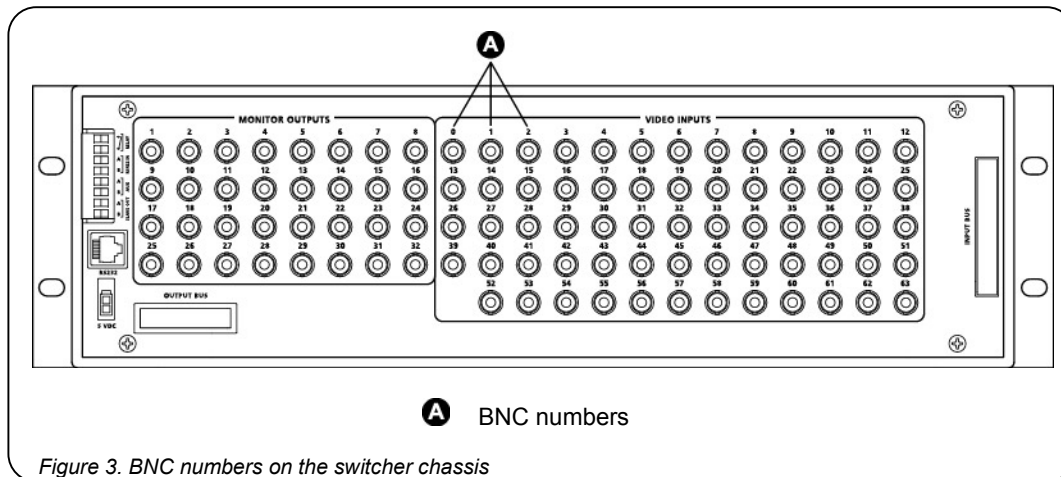


Figure 3. BNC numbers on the switcher chassis

- 4) Click in the Camera Title field for the desired camera and enter a title.
- 5) Click on None in the Video Loss field for the same camera. A drop-down arrow will appear.
- 6) Click on the arrow to select None, Sync, Low, Medium, or High sensitivity (See Figure 4).
- 7) Repeat steps 2 through 6 for all cameras in the system.
- 8) To clear the camera setup information for a camera, click on the camera number to highlight the row and click **Clear Selection**.
- 9) To clear the camera setup information for a group of cameras:
 - Click on the number field of a camera and drag to highlight a series of cameras and click **Clear Selection**.
 - While holding the Ctrl key, click on the number fields of the cameras you would like to clear and click **Clear Selection**.
 - Click **Clear All** to clear the camera setup information for all cameras.
- 10) Click **Save Camera Setup**.

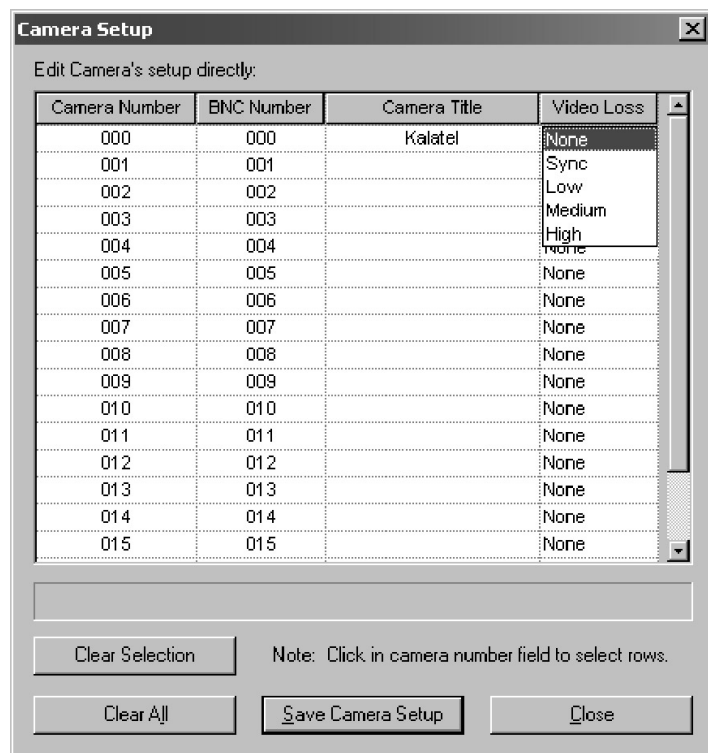


Figure 4. Camera setup dialog box shown with video loss drop-down menu and titled camera

11) Click **Close**.

4 PROGRAMMING MONITORS

If a number of monitors smaller than 64 was entered in the System Setup dialog box, some of the monitor icons in the main setup screen will be unavailable. See Figure 5. To make more or all of the monitors available, go back to System Setup and enter a greater number of monitors.

There are two ways to select or deselect monitors:

- If all monitors are to share the same settings, click the **Select All Monitors** button. All of the monitor icons will become highlighted. The button will change to **Deselect All**. Click on it again if you wish to deselect all monitors. See Figure 5.
- If monitors are to have different settings, select monitors one at a time by clicking on the number of the monitor. Click the **Monitor(s) Setup** button to begin programming the selected monitor. See Figure 5.

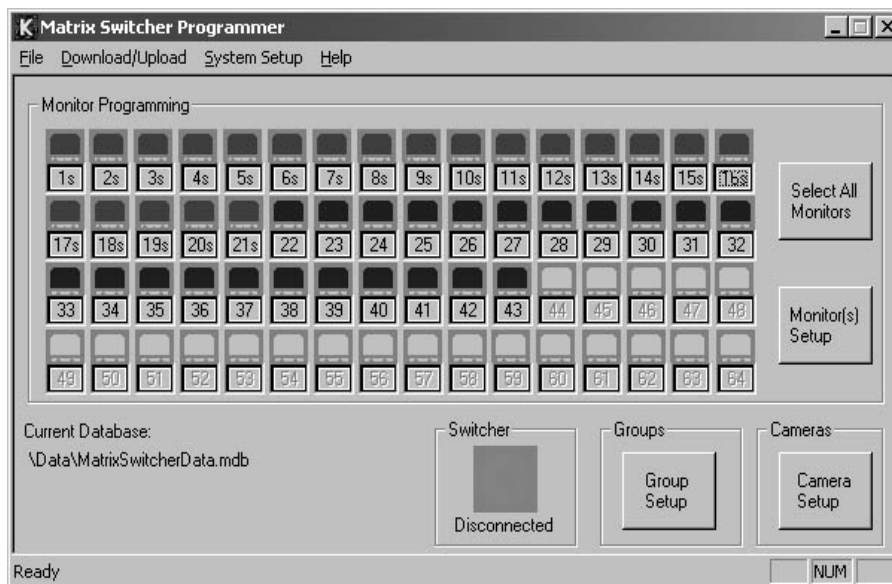


Figure 5. Monitor selections. Monitors 1 through 21 are selected, 22 through 43 are available, and 44 through 64 are unavailable

4.1 MONITOR SETUP

- 1) Click on the **Monitor Setup** tab of the Programming Monitor dialog box.
- 2) Set monitor parameters. See Figure 6.

NOTE: The Universal Dwell time set in step 3 is for monitor and group sequences.

- 3) After setting parameters, click the **Save Mon. Setup** button.

NOTE: If you click on the Close button or another tab in the Programming Monitor dialog box without saving changes, the dialog box in Figure 7 will appear. Settings will be lost if you do not save.

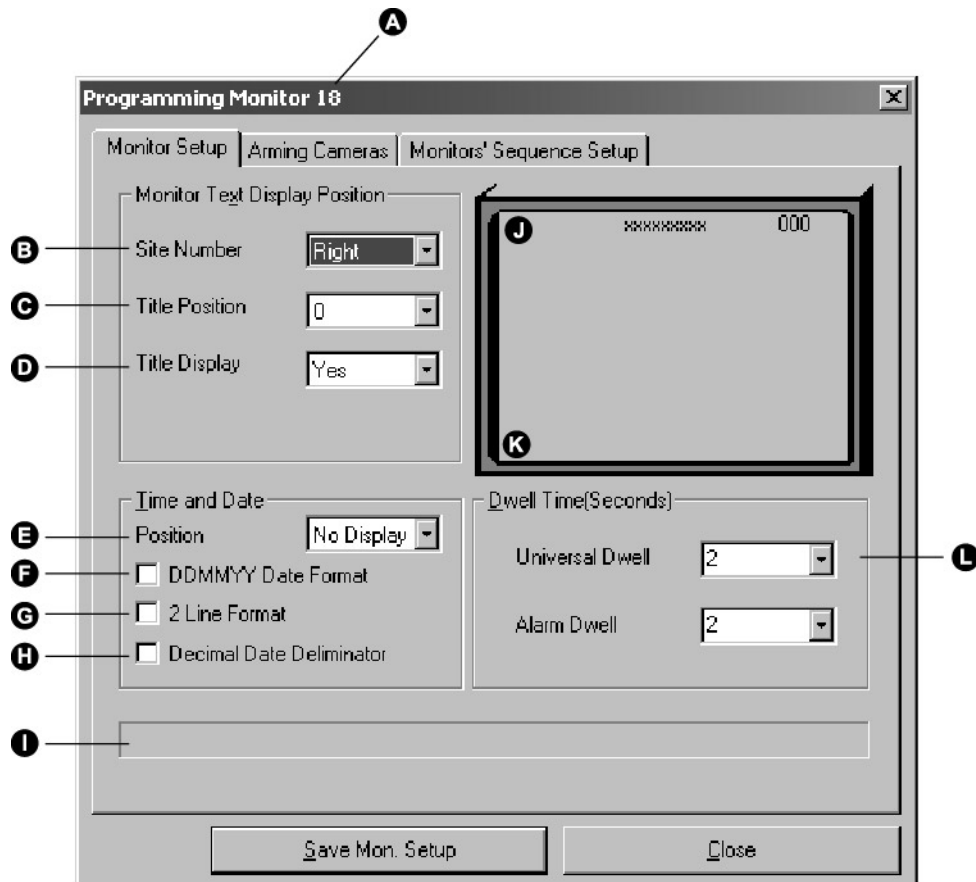


Figure 6. Setting monitor setup parameters

- | | | |
|--|---|---|
| A Number of selected monitor | E Lines 1-10, No display | I Line 0 |
| B Position: left, right, no display | F mm.dd.yy or dd.mm.yy | J Line 10 |
| C Lines 1-10 | G Date and time displayed in two lines | K Dwell time saved for monitor and group sequences |
| D Yes, no | H Save progress | L 1-30 sec. |
| | | M 1-30 sec. |

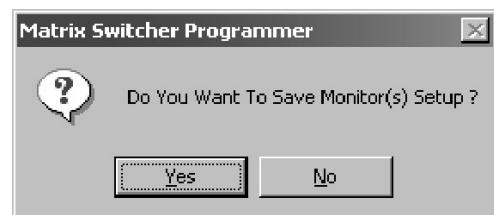


Figure 7. Save monitor setup alert box

4.2 ARMING CAMERAS

- 1) Click on the **Arming Cameras** tab of the Programming Monitor dialog box. See Figure 8.
- 2) All cameras are armed by default. To disarm cameras:
 - Click on the camera number to highlight it and click **Disarm**.
 - Click and drag to select multiple cameras and click **Disarm**.
 - Click **Disarm All**.
- 3) Click on **Save Armed Cameras**.

NOTE: If you click on the Close button or another tab in the Programming Monitor dialog box without saving changes, the dialog box in Figure 9 will appear.

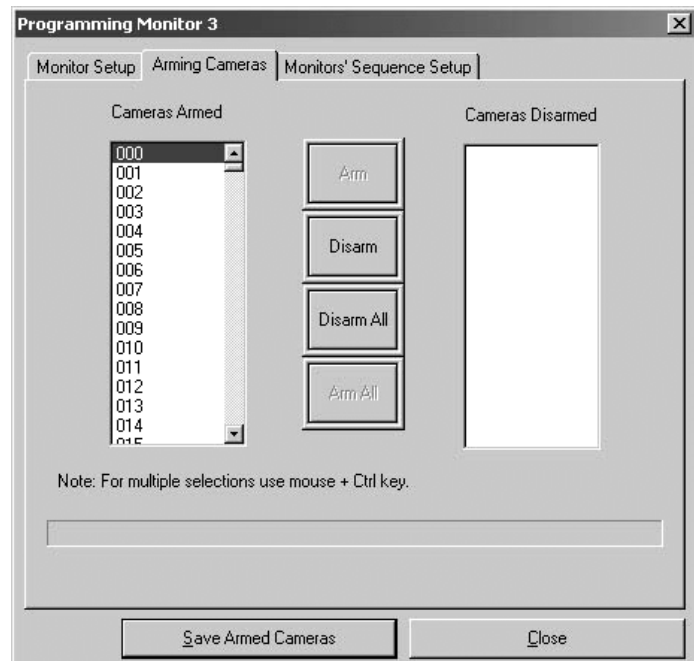


Figure 8. Arming cameras

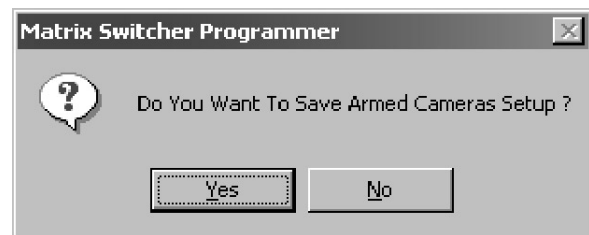


Figure 9. Save Armed Cameras alert

4.3 MONITORS' SEQUENCE SETUP

Click on the Monitors' Sequence Setup tab to set up a sequence of camera views for the selected monitor or monitors. Each monitor or group of monitors can use one of six sequences (sequences 1 through 6) with up to 32 steps each. Sequence 7 always begins at camera 0 and runs up to the camera assigned in the Highest Camera Number field.

- 1) Choose a sequence number by clicking on one of the Sequence Number buttons. See Figure 10.
- 2) All armed cameras are listed in the box on the left. Click on the camera you would like to appear first in the sequence to highlight it. See Figure 10.
- 3) Select the number of seconds the camera is to remain on the monitor from the Sequence Step Dwell Time drop-down menu. See Figure 10.
- 4) Click **Add To Sequence**. The camera number and its dwell time appear in the sequence box on the right. See Figure 10. Continue this process until you have entered all desired cameras in the sequence.

- 5) To add a camera in the middle of a sequence, position the pointer over the number of the step you wish to change and click to highlight it. Follow steps 2 through 4. The new camera will be inserted and all cameras below it will be moved down one step.
- 6) To remove a camera from the sequence, position the pointer over the step number and click to highlight the entire step. Click **Delete From Sequence** or push the Delete key on your keyboard. See Figure 11.
- 7) Click **Save Sequence**.

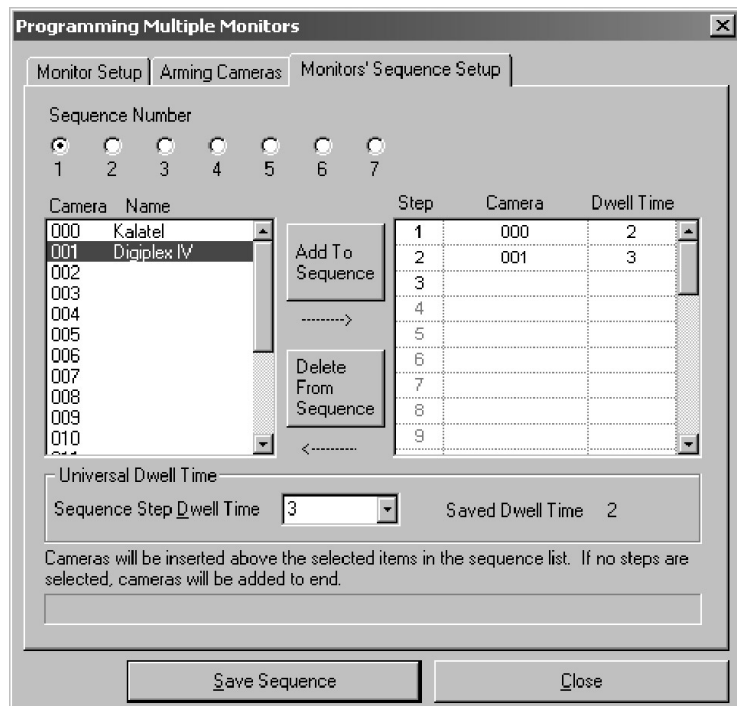


Figure 10. Camera 001, Digiplex IV, is selected. Clicking **Add To Sequence** will place camera 001 in step 3 of the sequence

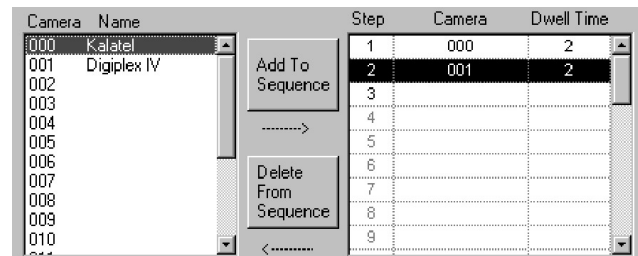


Figure 11. Step 2 is highlighted: Click on **Delete From Sequence** to remove camera 001 from step 2

For sequence 7:

- 1) Click on the Sequence Number button for sequence 7.
- 2) In the Highest Camera Number field, enter the number of the camera at which the sequence will end.

- 3) Select a dwell time from the drop-down menu if the Saved Dwell Time is not appropriate.

NOTE: The Saved Dwell Time can be changed in the Monitor Setup window.

- 4) Click **Save Sequence**.
- 5) Click **Close**.

Programming Monitor 43

Monitor Setup | Arming Cameras | **Monitors' Sequence Setup**

Sequence Number: 1 2 3 4 5 6 **7**

Highest Camera Number:

Camera	Name	Step	Camera	Dwell Time
000	Kalatel	1		
001	Digiplex IV	2		
002		3		
003		4		
004		5		
005		6		
006		7		
007		8		
008		9		
009				
010				

Universal Dwell Time: Saved Dwell Time: 2

Note: Sequence 7 runs from camera 0 up to the camera assigned in the highest camera number field.

Save Sequence **Close**

Figure 12. Enter the number of the sequence's last camera in the Highest Camera Number field (note that the rest of the box is grayed out)

5 GROUPS

5.1 GROUP SETUP

In the Group Setup dialog box, you can program groups of cameras to appear on specific monitors in a sequence. Thirty-two groups can be programmed into twelve sequences.

- 1) Click on the **Group Setup** button in the main programming window (Figure 4).
- 2) In the Groups dialog box, click on the Group Setup tab.
- 3) Choose a group number by clicking on one of the Select Group buttons. See Figure 13.
- 4) In the Group Properties section, click in the Group Name field and enter a name for the group. See Figure 13.
- 5) In the Site Alarm Number field, enter the number of the site alarm that will call up this group when the alarm is activated. See Figure 13.

Groups

Group Setup | Group Sequence Setup

Select Group:

1 2 3 4 5 6 7 8
9 10 11 12 13 14 15 16
17 18 19 20 21 22 23 24
25 26 27 28 29 30 31 32

Group Properties:

Group Name:

Site Alarm Number:

Monitor Number	Site Number
1	001
2	
3	
4	
5	
6	
7	
8	
9	

Save Group **Close**

Figure 13. Group Setup dialog box

- 6) Click in the Site Number field corresponding to each monitor and enter the camera you would like to be displayed. See Figure 13.
- 7) Click **Save Group**.
- 8) Repeat steps 3 through 7 for additional groups.

5.2 GROUP SEQUENCE SETUP

See Figure 14:

- 1) Click on the Group Sequence Setup tab.
- 2) Click on a sequence number in the Select Sequence section.
- 3) Select a dwell time for the first group in the sequence from the Sequence Step Dwell Time drop-down menu.
- 4) Click in the Group Number field for Step 1 and enter the number of the group you would like to be displayed first in the sequence.
- 5) Press Enter or click in the next Group Number field. The group name that you programmed in Group Setup will appear.

NOTE: If you enter a group number for a group that has not been set up, a red dot will appear in the Dwell Time field.

- 6) To change the group in a given sequence step, click in the Group Number field of the step you want to change, delete the current information, and enter the new group number.
- 7) Click **Save Sequence** to save your settings.
- 8) Repeat steps 2 through 7 for successive sequences.

Groups

Group Setup | **Group Sequence Setup**

Select Sequence

1 ☒ 2 ☐ 3 ☐ 4 ☐ 5 ☐ 6 ☐
 7 ☐ 8 ☐ 9 ☐ 10 ☐ 11 ☐ 12 ☐

Universal Dwell Time

Sequence Step Dwell Time: 5 Saved Dwell Time: 2

Step	Group Number	Group Name	Dwell Time
1	01	Kalatel	5
2			
3			
4			
5			
6			
7			
8			
9			
10			

Save Sequence Close

Figure 14. Group Sequence Setup dialog box

6 DOWNLOADING AND UPLOADING

6.1 DOWNLOADING

- 1) Click on Download/Upload in the menu bar. See Figure 15.
- 2) On the Select Serial Port menu, select the com port on your computer to which the switcher is connected.
- 3) Click on **Connect To Serial Port** to connect to the switcher.
- 4) The Connected to Switcher dialog box will appear. See Figure 16.
- 5) Click **OK**.

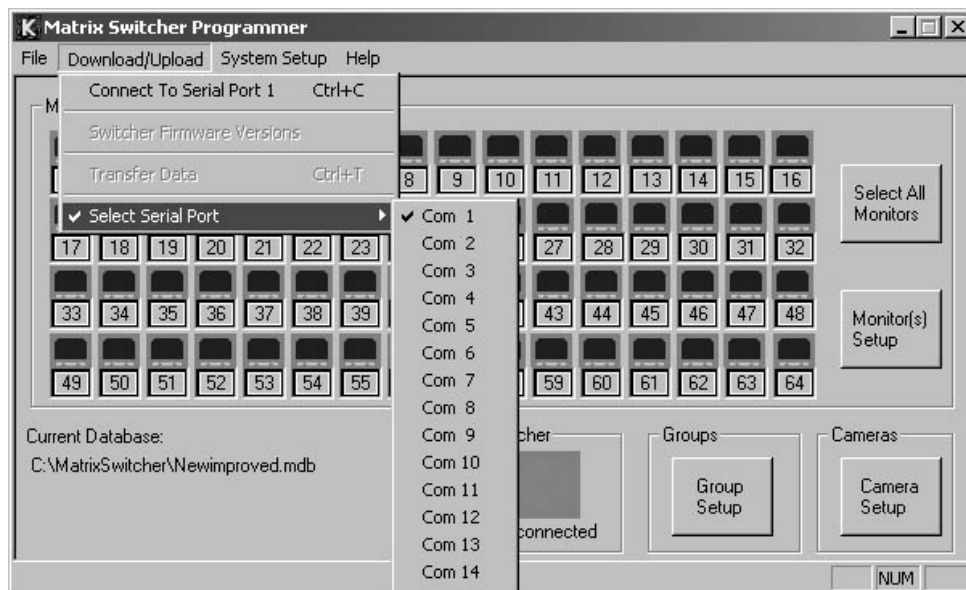


Figure 15. Select Serial Port

NOTE: If the No Switcher Card Found dialog box appears, make sure that the switcher is turned on and that all connections are sound. See Figure 17.



Figure 16. Connected to Switcher dialog box



Figure 17. No Switcher Card Found dialog box

- 6) On the Download/Upload menu, click **Transfer Data**.
- 7) Select the appropriate check boxes. The Download/Upload Sequences check box remains unavailable until the Download/Upload Monitors check box is selected. See Figure 18.

NOTE: Monitors, Group Data, and Cameras may each be uploaded or downloaded separately. The download or upload process will take longer in a large system if all check boxes are selected.

- 8) Click **Download to Switcher**. (The downloading process may take a few minutes.)
- 9) When the data transfer is complete, click **Close** to return to the main programming window.

6.2 UPLOADING

- 1) Connect the switcher to your computer if it is not already connected. See steps 1 through 4 in section 6.1, Downloading.
- 2) On the Download/Upload menu, click **Transfer Data**.
- 3) Select the appropriate check boxes. The Download/Upload Sequences check box remains unavailable until the Download/Upload Monitors check box is selected. See Figure 18.
- 4) Click **Upload to Computer**.
- 5) When uploading is complete, click **Close** to return to the main programming window.

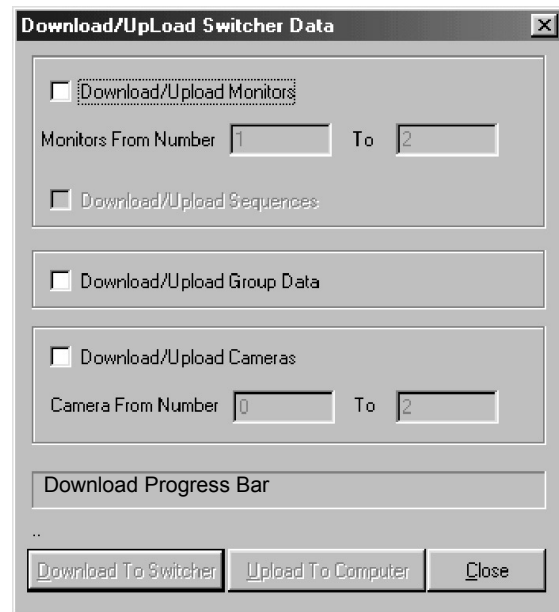


Figure 18. Download/Upload Switcher Data dialog box

7 OPENING AND SAVING A DATABASE

7.1 OPENING AND SAVING AN EXISTING DATABASE

To Save:

- 1) On the file menu, click **Save Database As....** The dialog box in Figure 19 will appear.
- 2) Enter a file name in the File Name field.
- 3) Select a folder in which to save the file.
- 4) Click **Save**.

To Open:

- 5) On the file menu, click **Open**. The dialog box in Figure 20 will appear.
- 6) Click on the name of the database you wish to open, or type the name into the File name field.
- 7) Click **Open**.

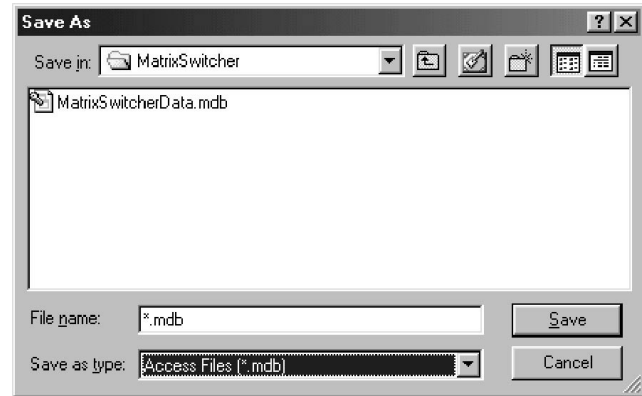


Figure 19. Save As dialog box

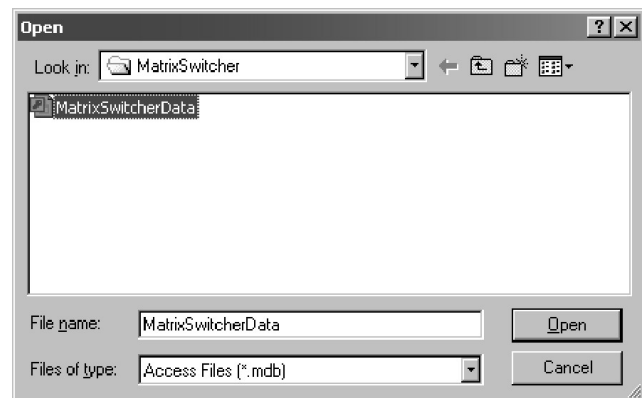


Figure 20. Open dialog box

7.2 OPENING A NEW DATABASE



CAUTION!

Any open, unsaved database will be erased when a new one is created.

- 1) If you wish to save the current database, follow the instructions in Saving a Database, above. If you do not wish to save the current database, continue with step 2.
- 2) On the File menu, click **New (Factory Defaults)** to open a new database. The window in Figure 21 will appear.
- 3) If you have not saved the current database, but you wish to, click **No** and follow the instructions in Saving a Database, above.
- 4) Click **Yes** to create a new database.

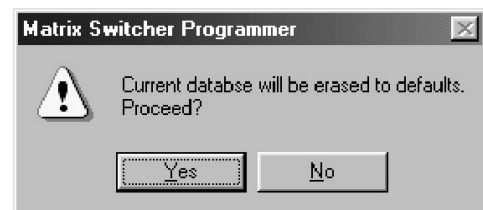



Figure 21. Erasure warning

8 PRINTING

The parameters for any number of cameras, monitors, monitor sequences, or group sequences can be printed.

- 1) On the File menu, click **Print...** to bring up the dialog box in Figure 22.
- 2) Enter the numbers of the monitors, cameras, monitor sequences, and group sequences whose parameters you wish to print by clicking on the appropriate button and entering numbers in the adjacent fields.
- 3) Click **Print**.
- 4) Click **Exit** to return to the main programming window. 

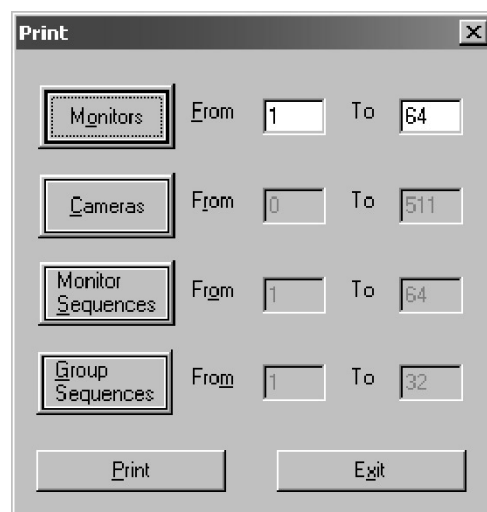


Figure 22. Print dialog box

