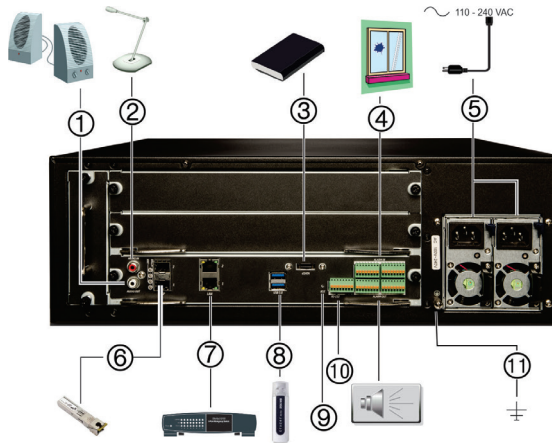


# TruVision NVR 70 Quick Start Guide

**Figure 1: Back panel connections**



1. **One audio output:** Connect to speakers for audio output.
2. **One audio input:** Connect a microphone for bi-directional audio (not recorded).
3. **eSATA:** Connect an optional eSATA drive to extend the internal storage.
4. **16 alarm inputs:** Connect physical alarms such as detectors, push buttons, etc.
5. **Redundancy power supplies (X2):** Connect two PSUs.
6. **SFP port:** Plug a small form-factor pluggable transceiver into the port in order to connect fiber cables.
7. **Eight alarm outputs:** Connect physical alarm outputs such as a siren, flash, relay.
8. **RS-232 input:** Text insertion for point-of-sale and ATM devices. Also used by technical support.
9. **Restart pin hole:** Access to the reset button. Hold down the reset button for seven seconds to reset the network settings.  
Note: This might cause the cameras to stop recording and the software to be unable to connect to the recorder.
10. **USB 3.0 port (X2):** Connect a USB device, CD/DVD burner or HDD.
11. **Ground:** Connect to ground.

Figure 2: TVN 70 front panel



1 **Status LEDs:**

*Alarm:* A blinking RED light indicates that there is a sensor Alarm In. No light indicates no alarm.

*Internal:* No light indicates that the recorder is currently recording video/audio. A blinking RED light indicates internal health failure.

*Network:* A steady GREEN light indicates that the recorder is currently connected to a network. A blinking RED light indicates that the recorder is not connected to any network.

*HDD:* A steady GREEN light indicates that the recorder is accessing the HDD in read or write operation. A blinking RED light indicates HDD failure. No light indicates that the unit is in idle state.

*Archive:* A steady GREEN light indicates that archiving is in progress. No light indicates no archiving in progress.

2. **Front panel lock:** You can lock or unlock the front panel with a key. It provides access to the HDDs.
3. **Archive button:** Press once to enter quick archive mode. Press twice to start archiving. If the USB stick has an LED, it will flash during archiving.
4. **USB 3.0 port:** There is one USB port. Use the USB port to archive video, upgrade firmware, use a USB mouse or connect a USB CD/DVD burner.

---

## Package contents

The TruVision NVR 70 (model TVN 70) is shipped with the following items:

- AC power cords
- Recorder
- Hard drive kits
- CD with software and manuals
- *TruVision NVR 70 Quick Start Guide*
- *TruVision NVR 70 User Manual (on CD)*
- *TruVision Recorder Operator Guide (on CD)*

- Place the unit in a secure location.
- Ensure that the unit is in a well-ventilated area.
- Do not expose the unit to rain or moisture.

## Installation environment

Refer to the user manual for detailed information, but observe these important requirements:

## Quick install

Recommended steps for setting up the recorder:

1. Connect all the required devices required to the back panel of the recorder. See Figure 1 on page 1
2. Connect the power cords to the unit and turn on the power.
3. Set up the unit with the required settings using the setup wizard.

## First-time use

The recorder has an express installation wizard that lets you easily configure basic recorder settings when first used. It configures all cameras simultaneously. The configuration can then be customized as required.

By default, the setup wizard will start once the recorder has loaded. The wizard walks you through some of the more important settings of your recorder.

Select the preferred language for the system and then enter the administrator password. The default admin password is 1234. It is strongly recommended that this password is changed. The wizard will then guide you through the menus to set the users, time and date, HDD management, and recording configuration.

When all the required changes have been entered, click **Finish** to exit the wizard. The recorder is now ready to use. Recording starts automatically.



**Important:** Your TruVision unit is delivered with default user name and password credentials for initial access, easy configuration and auto discovery. For security reasons, it is highly recommended to change the default credentials.

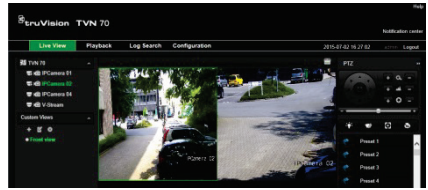
## Operating the recorder

You operate the recorder through a browser interface, which provides full functionality for viewing, playback and recorder configuration from any PC with Internet access. The browser's easy-to-use controls give you quick access to all recorder functions.

You can also use TruVision Navigator or TVRmobile.

Connect the mouse to the recorder by plugging the mouse USB connector into the USB port on the front panel. The mouse is immediately operational and the pointer should appear. It lets you navigate and make changes to settings in the user interface. See Figure 3 below.

Figure 3: Browser interface (live view shown)



## Web browser control

To access the unit, open a web browser and enter the IP address assigned to the recorder as a Web address. In the login screen, enter the default user ID and password:

- User ID: admin
- Password: 1234

The default values for recorder network settings are:

- DHCP: Disabled by default.
- IP address - 192.168.1.82
- Subnet mask - 255.255.255.0
- Gateway address - 192.168.1.1
- Ports:

### When using the browser:

RTSP port: 554

HTTP port: 80

### When using TruNav:

RTSP port: 554

Server/Client software port : 8000

## Live view mode

Live mode is the normal operating mode of the unit where you watch live pictures from the cameras.

## Configuring the recorder

The recorder has a menu structure that allows you to easily configure the unit's parameters. Each submenu displays a screen that lets you edit a group of settings. Most submenus are available only to system administrators.

Refer to the recorder user manual for detailed information on configuring the unit.

**To access the menus:**

Click **Configuration** in the menu toolbar. The menu screen appears. Click the desired submenu in the submenu panel.

**Figure 4: Browser configuration window**



**Menu window structure:**

1. **Menu toolbar:** Setup options available for the selected menu function. Move the mouse over a command button and click to select it. There are five menu modes: Live View, Playback, Log Search, and Configuration.
2. **Submenu panel:** Submenus for the selected menu function are displayed. Click an item to select it.
3. **Setup menu:** All the details for the selected submenu are displayed. Click a field to make changes.

**Specifications**

Power supply	2 × 100 to 240 VAC, 6.3 A, 50 to 60 Hz
Power consumption (without HDD)	<= 70 W
Operating temperature	-10 to +55 °C (14 to 131 °F)
Relative humidity	10 to 90%

Dimensions (W x D x H)	445 × 530 × 150 mm (17.51 × 20.86 × 5.90 in.)
---------------------------	---

Weight	≤ 18 kg (39.68 lb.) (without HDD)
--------	--------------------------------------

**Contact information**

For contact information, see [www.interlogix.com](http://www.interlogix.com) or [www.utcssecurityproducts.eu](http://www.utcssecurityproducts.eu)