

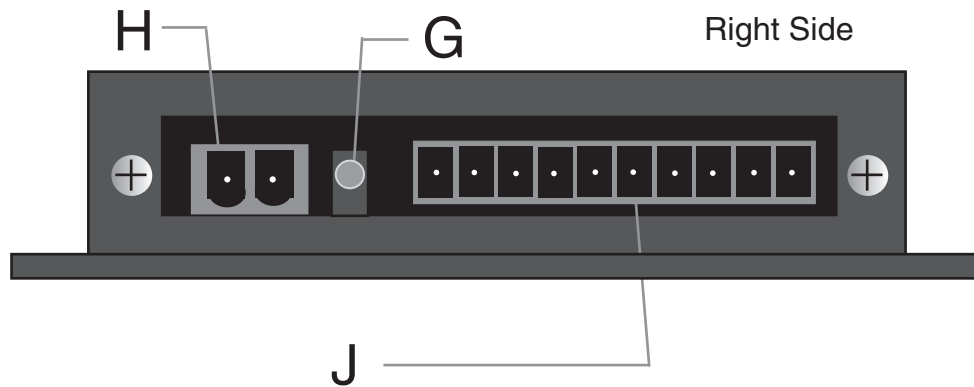
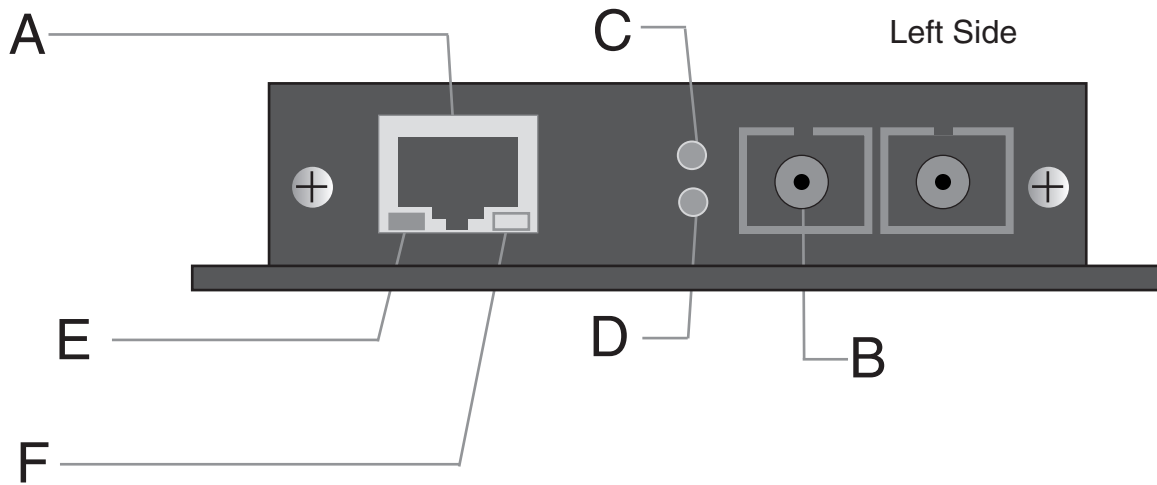
DED2500-E
DED2500-M
DED2500-EM
DED2500-S
DED2500-ES

IFS Fiber Module

Installation & Operation

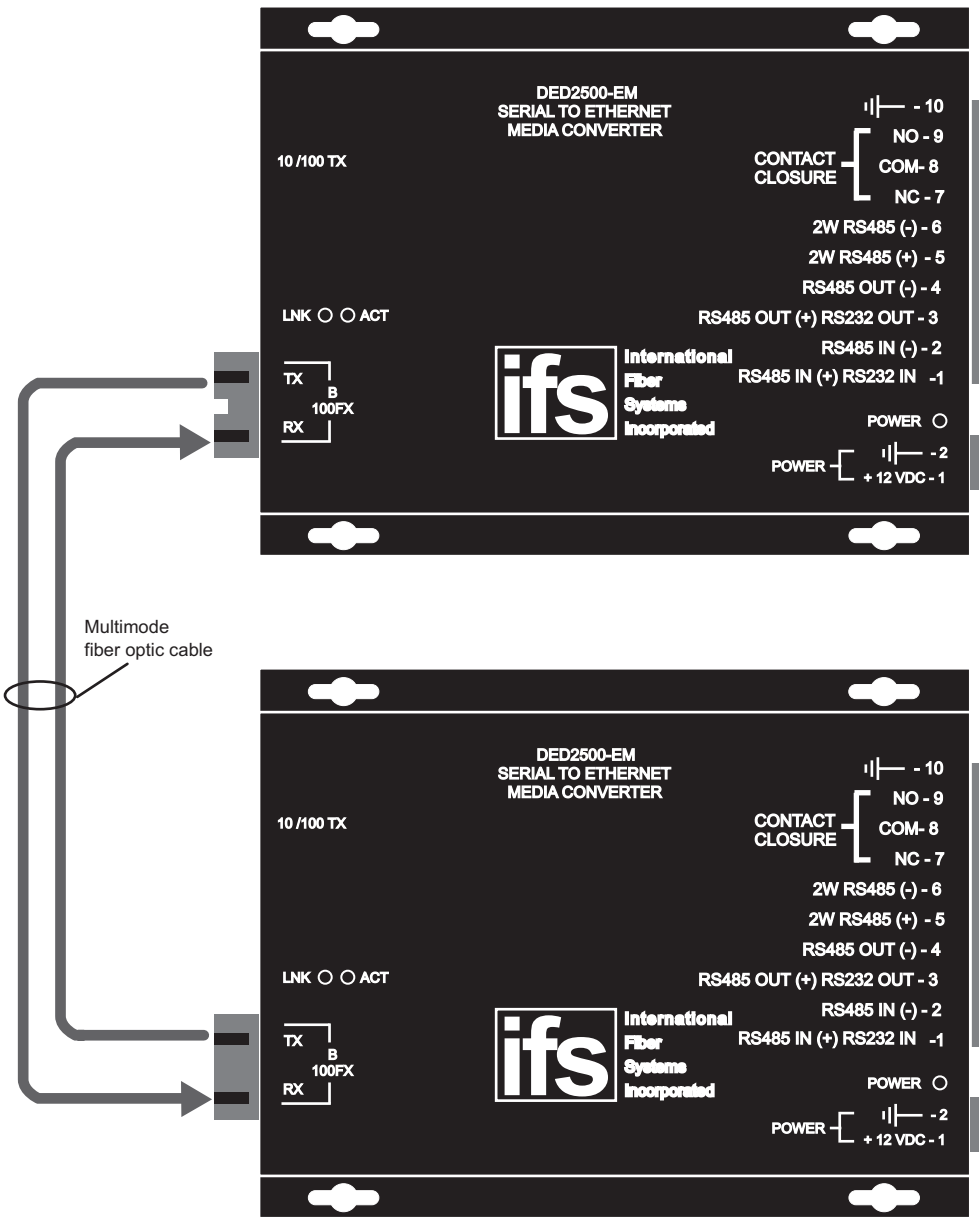
Instructions

DED2500 series



A	Network Connection (Electrical)	
B	Network Connection (Optical)	
C	Network Activity (Optical)	Blinks with data transfer
D	Link	OFF: No Link ON: Link
E	Network Activity (Electrical)	Blinks with data transfer
F	Link Speed (Electrical)	OFF: 10 Mbps ON: 100 Mbps
G	Power	LED illuminates
H	Power Connector	
J	Data Connector	

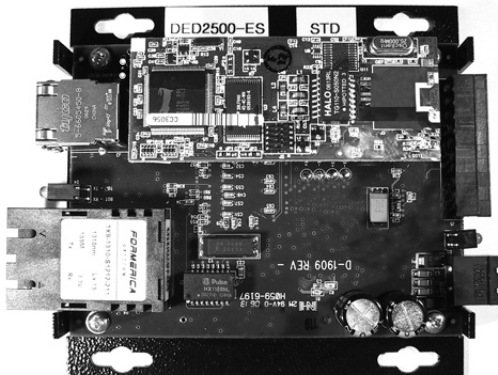
DED2500 series



NOTE: When using 2 or 4-wire RS485 a 120 ohm resistor (provided) may need to be connected across the data (IN) lines to ensure proper operation.

JMP 1 ———
Password Reset

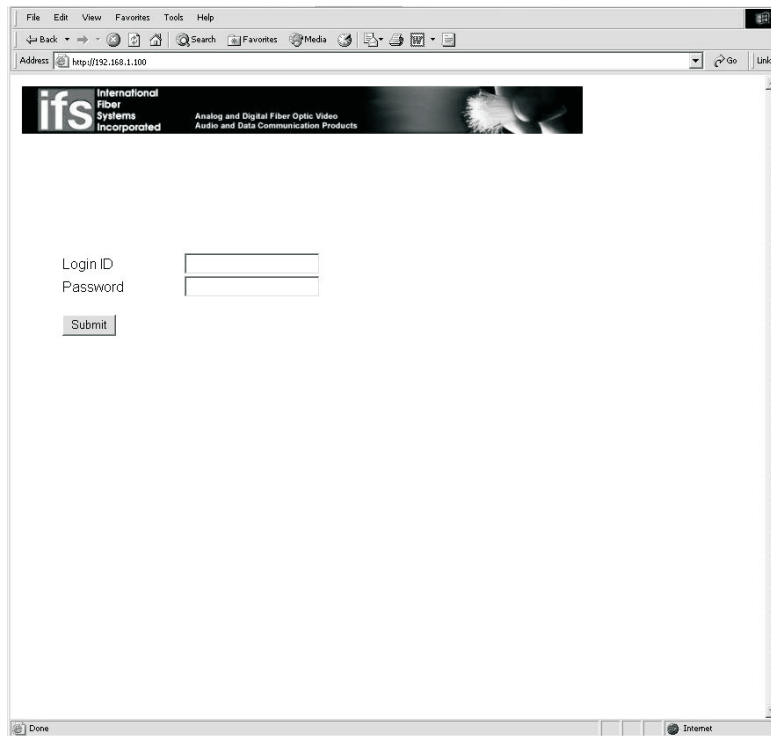
J3



To reset to factory defaults, with no power applied to the unit, short the pins on JMP 1, then power the unit up for approx. 5 seconds. Power down and remove the short on JMP 1.

Initializing the DED2500

Upon power up and network connection into the DED2500, the address factory default is **192.168.1.100**. The unit's serial port configuration must be completed prior to physically wiring to the data port. Opening the web browser to the default address, the log on screen will be displayed.



LoginID: **admin**
Password: **123456**

This will open the network device parameters. Assign a new network address by either user selection or enabling the DHCP. **Note** this address for future reference, it will be needed to “assign” the units to each other.

Intializing the DED 2500 continued.

Local units settings

Query between paired units.

in mSec

Submit after Value Changes

Submit Restart Logout

Detailed description: This screenshot shows the 'Network Setup' page of the IFS web interface. It contains several input fields: IP Address (192.168.1.100), Gateway (192.168.1.1), Netmask (255.255.255.0), DHCP (Disabled), Keepalive (Enabled), and Alive time (120). A bracket on the left groups the IP, Gateway, and Netmask fields under the label 'Local units settings'. Another bracket groups the Keepalive and Alive time fields under the label 'Query between paired units.'. A line points from the Alive time field to the text 'in mSec'. At the bottom, there are 'Submit', 'Restart', and 'Logout' buttons, with the text 'Submit after Value Changes' next to the Submit button.

To set up the serial port, select the Serial Port Setup at the top of the Network Setup window. **Note:** The serial port must be configured prior to physically wiring the data port.

TCPIP port settings (must match paired units)

Set one unit of pair to "master" and the other to "slave."

Serial port settings

Serial port configurations

Always disabled when "Nagle" is enabled.

Address of "paired" unit.

Submit after Value Changes

Submit Restart Logout

Detailed description: This screenshot shows the 'Serial Port Setup' page of the IFS web interface. It contains several input fields: Port (Enabled), Baudrate (115200 bps), Remote Port (1232), Local Port (1232), Serial Mode (RS232 or 4W-RS485), Serial Interface (RS232), Databits (8), Parity (None), Flow Control (Disabled), TCP Mode (Master), Flush (Disabled), and Remote Address (192.168.1.100). A bracket on the left groups the Remote Port and Local Port fields under the label 'TCPIP port settings (must match paired units)'. Another bracket groups the TCP Mode and Flush fields under the label 'Set one unit of pair to "master" and the other to "slave."'. On the right side, a bracket groups the Port, Baudrate, Remote Port, Local Port, and Serial Mode fields under the label 'Serial port settings'. Another bracket groups the Serial Interface, Databits, and Parity fields under the label 'Serial port configurations'. A line points from the TCP Mode field to the text 'Always disabled when "Nagle" is enabled.'. A line points from the Remote Address field to the text 'Address of "paired" unit.'. At the bottom, there are 'Submit', 'Restart', and 'Logout' buttons, with the text 'Submit after Value Changes' next to the Submit button.

FCC Compliance

This device complies with Part 15 of the FCC Rules. Operation is subject to the following two conditions: (1) This device may not cause harmful interference, and (2) this device must accept any interference received, including interference that may cause undesirable operation.

Changes or modifications not expressly approved by International Fiber Systems, Inc. could void the user's authority to operate the equipment.

NOTE: This equipment has been tested and found to comply with the limits for a Class A digital device, pursuant to Part 15 of the FCC Rules. These limits are designed to provide reasonable protection against harmful interference when the equipment is operated in a commercial environment. This equipment generates, uses and can radiate radio frequency energy and, if not installed and used in accordance with the instruction manual, may cause harmful interference to radio communications. Operation of this equipment in a residential area is likely to cause harmful interference in which case the user will be required to correct the interference at his own expense.

CLASS 1 LASER PRODUCT
(For purposes of IEC 60825-1)

Complies with FDA Performance Standard for Laser Products
Title 21
Code of Federal Regulations
Subchapter J



Comprehensive Lifetime Warranty

(a) Seller warrants to the original End User that products and any services furnished hereunder will be free from defects in material and workmanship as of the date of delivery, and will conform to Seller's published technical specifications. The foregoing shall apply only to failures to meet said warranties which appear within that period of time during which the Products are installed in their original installation for the original End User and operator of such Products; provided, however, that in the event of product discontinuance, warranty support is limited to five (5) years from the announcement of discontinuance. Notwithstanding the preceding sentence, the duration of the warranty period for products not manufactured by Seller (e.g., fiber optic cabling, test equipment, power supplies or batteries) shall be the warranty period offered by the original manufacturer, if any.

(b) The conditions of any tests shall be mutually agreed upon and Seller shall be notified of, and may be represented at, all tests that may be made. The warranties and remedies set forth herein are conditioned upon (a) proper storage, installation, use and maintenance, and conformance with any applicable recommendations of Seller and (b) Buyer promptly notifying Seller of any defects and, if required, promptly making the product available for correction.

(c) If any product or service fails to meet the foregoing warranties, Seller shall thereupon correct any such failure either at its option,

(i) by repairing any defective or damaged product or parts of the products, or (ii) by making available any necessary repaired or replacement products or parts thereof. Any repaired or replacement part or product shall be warranted for the remaining period of the original Warranty Period. Seller shall pay, or credit Buyer for, the cost of freight for all return shipments of products or parts to Buyer. Where a failure cannot be corrected by Seller's reasonable efforts, the parties will negotiate an equitable adjustment in price.

(d) The preceding paragraph sets forth the exclusive remedies for claims based on defect in or failure of products or services, whether the claim is in contract, indemnity, warranty, tort (including Seller's negligence), strict liability or otherwise and however instituted. Upon the expiration of the warranty period, all such liability shall terminate and BUYER shall have a reasonable time, within thirty days after the warranty period, to give written notice of any defects which appeared during the warranty period. The foregoing warranties are exclusive and in lieu of all other warranties, whether written, oral, implied or statutory. NO IMPLIED OR STATUTORY WARRANTY OF MERCHANTABILITY OR FITNESS FOR PARTICULAR PURPOSE SHALL APPLY. Seller does not warrant any products or services of others which BUYER has designated.

Contacting us

For help installing, operating, maintaining, and troubleshooting this product, refer to this document and any other documentation provided. If you still have questions, contact us during business hours (Monday through Friday, excluding holidays, between 5 a.m. and 5 p.m. Pacific Time).

Table 3. Sales and support contact information

	Sales	Technical support
Phone:	Toll-free: 888.437.3287 in the US, including Alaska and Hawaii; Puerto Rico; Canada. Outside the toll-free area: 503.885.5700.	
E-mail		techsupport@interlogix.com
Fax	888.329.0331	888.329.0332

Note: Be ready at the equipment before calling.

Online

Another great resource for assistance with your Interlogix product is our online publication library. To access the library, go to our website at the following location:

<http://www.interlogix.com/transmission/>

1. Many Interlogix documents are provided as PDFs (portable document format). To read these documents, you will need Adobe Reader, which can be downloaded free from Adobe's website at www.adobe.com.

Product Disassembly Instructions for WEEE

Per European Directive 2002/95/EC Waste Electrical and Electronic Equipment

Required Tools:



- One number 2 Phillips (crosstip) screwdriver.
- One number 2 flat screwdriver.

For the enclosed box version:

1. Locate and remove box cover securement screws. Usually, but not limited to, at least 4 screws.
2. Lift off box top cover.
3. Locate and remove securement screws for printed circuit board.
4. If there are multiple boards to the assembly, continue removing securement screws until none are left.
5. Lift off printed circuit board.
6. Disassembly of box version of product is complete.

For rack version:

1. Locate and remove securement screws for printed circuit board. Usually, but not limited to, at least 4 screws.
2. If there are multiple boards to the assembly, continue removing securement screws until none are left.
3. Lift off printed circuit board(s).
4. Disassembly of rack card version of product is complete.

Copyright	© 2011 UTC Fire & Security. All rights reserved.
Trademarks and patents	<p>Interlogix and IFS names and logos are trademarks of UTC Fire & Security.</p> <p>Other trade names used in this document may be trademarks or registered trademarks of the manufacturers or vendors of the respective products.</p>
Manufacturer	<p>UTC Fire & Security Americas Corporation, Inc. 2955 Red Hill Avenue, Costa Mesa, CA 92626-5923, USA</p> <p>Authorized EU manufacturing representative: UTC Fire & Security B.V. Kelvinstraat 7, 6003 DH Weert, The Netherlands</p>
Certification	 N4131
FCC compliance	<p>Class A: This equipment has been tested and found to comply with the limits for a Class A digital device, pursuant to part 15 of the FCC Rules. These limits are designed to provide reasonable protection against harmful interference when the equipment is operated in a commercial environment. This equipment generates, uses, and can radiate radio frequency energy and, if not installed and used in accordance with the instruction manual, may cause harmful interference to radio communications. Operation of this equipment in a residential area is likely to cause harmful interference in which case the user will be required to correct the interference at his own expense.</p>
ACMA compliance	<p>Notice! This is a Class A product. In a domestic environment this product may cause radio interference in which case the user may be required to take adequate measures.</p>
Canada	<p>This Class A digital apparatus complies with Canadian ICES-003. Cet appareil numérique de la classe A est conforme à la norme NMB-003 du Canada.</p>
European Union directives	<p>2004/108/EC (EMC directive): Hereby, UTC Fire & Security declares that this device is in compliance with the essential requirements and other relevant provisions of Directive 2004/108/EC.</p>
	<p>2002/96/EC (WEEE directive): Products marked with this symbol cannot be disposed of as unsorted municipal waste in the European Union. For proper recycling, return this product to your local supplier upon the purchase of equivalent new equipment, or dispose of it at designated collection points. For more information see: www.recyclethis.info.</p>
Contact information	For contact information, see www.interlogix.com .