

Commercial Sensors

Smart detection

Interlogix™ commercial sensors feature the latest technology to deliver advanced detection and accurate, reliable performance.



Advanced sensing technology that delivers superior protection

Engineered to provide the highest levels of reliability and security, Interlogix™ sensors offer outstanding value and innovative features designed to meet specific application needs. Our full line of high-performance solutions works with other Interlogix products to deliver exceptional sensing and detection that's both accurate and consistent.

Easy to install and operate, Interlogix commercial sensors are ideal for a wide range of applications:

- Banks and financial institutions
- K-12 schools
- Retail stores
- Office buildings
- Healthcare facilities
- Manufacturing and warehouses
- Utilities and remote sites
- Apartment/Condominium complexes



Designed to effectively secure the most demanding applications

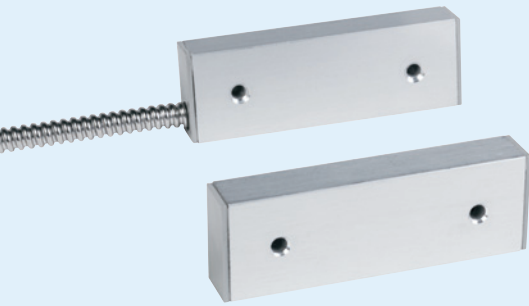
Aritech offers a broad range of sensing and detecting products that provide the highest levels of reliability and protection, along with features designed to meet specific application needs. Ideally suited for high-risk environments, Aritech's full line of intrusion solutions includes wired sensors, detectors and control panels that work together for enhanced security, convenience and control.



Reliable, cost-effective detection

ITI offers a wide range of wired and wireless sensors, detectors and control panels that provide outstanding value. Designed for easy installation and user-friendly operation, the entire line of ITI products consistently delivers convenient, effective sensing and detection.

Magnetic Contact Sensors



Highly accurate magnetic contact sensors provide reliable detection of unwanted activity. Interlogix™ offers a wide selection of wired and wireless options, from discreet, low-profile models to heavy-duty sensors with rugged housings for the most robust applications. All models are designed to install quickly and easily for complete security that's convenient and cost-effective.

DOOR & WINDOW CONTACTS / SURFACE MOUNT



1045 Series

- Can be used on steel doors
- Wide gap distance permits faster installation and helps prevent false alarms caused by loose-fitting doors
- Rugged construction
- Convenient surface mount wiring
- UL/ULC

Ordering Information

1045W	Wire Lead, 3" Gap, Closed Loop
1047H	Wire Lead, 3/8" to 1-1/4" Biased for High Security, SPDT
1042TW	Screw Terminal, 3" Gap, Closed Loop
1044TW	Screw Terminal, 3" Gap, SPDT
1045T	Screw Terminal, 1-1/4" Gap, Closed Loop
1047T	Screw Terminal, 1-1/4" Gap, SPDT

Note: Additional colors and variations may be available.

1085 Series

- Ideal for tight locations
- Potted reed switch prevents corrosion leading to false alarms
- Flexible gap distances allow for fast, easy installation and prevent false alarms from loose-fitting doors
- Wire leads or screw terminals
- Recessed mounting holes for clean-looking installations
- UL/ULC

Ordering Information

1082	Up to 2" Gap, Closed Loop
1084	Up to 2" Gap, SPDT or DPDT
1085	Up to 1-1/2" Gap, Closed Loop
1086	Up to 1-1/2" Gap, Open Loop
1087	Up to 1-1/2" Gap, SPDT

Note: Additional colors and variations may be available.

Magnetic Contact Sensors

DOOR & WINDOW CONTACTS / SURFACE MOUNT



2500 Series

- Ideal for metal or overhead doors, fences and gates
- Rugged, aluminum housing with potted leads for maximum corrosion protection, preventing false alarms
- Wide gap distances and several models to meet any application
- Armored cable
- UL/ULC

Ordering Information

2505A-L	3" Gap, Closed Loop
2507A-L	3" Gap, SPDT
2507AD-L	1-1/2" Gap, DPDT
2507AH-L	3/4" to 2-1/2" Gap, SPDT, Biased for Higher Security



2700 Series

- High security
- Triple-biased reeds, highly resistant to defeat
- Includes magnetic field tamper and pry tamper plate
- Factory compensated for the effects of steel
- Suitable for outdoor use
- Listed for use on safes and vaults
- UL/ULC

Ordering Information

2706AP-L	3/16" to 5/8" Gap, SPDT, Remote Test-protective Loop
2706AS-L	3/16" to 5/8" Gap, SPDT, Remote Test-supervised Loop
2707A-L	3/16" to 5/8" Gap, SPDT
2707AD-L	3/16" to 5/8" Gap, DPDT

DOOR & WINDOW CONTACTS / RECESSED MOUNT



1078/1076 Series

- Easy, press fit design for steel doors
- Ribbed, self-lock mounting
- Rugged, unibody construction for maximum durability. Sealed Reed Switches for maximum corrosion protection
- Flexible gap distances allow for fast, easy installation and prevent false alarms caused by loose-fitting doors
- Rare Earth Magnet designed for steel door with top channel available
- UL/ULC

Ordering Information

1076	1" dia., SPDT, 1/2" Gap
1076C	3/4" dia., SPDT, 3/4" Gap
1076W	3/4" dia., SPDT, 3/4" Gap
1076D	1" dia., DPDT, 1/2" Gap
1078	1" dia., Closed Loop, 1/2" Gap
R1078	1" dia., Closed Loop, 1/2" Gap, Rare Earth Magnet
1078C	3/4" dia., Closed Loop, 3/8" Gap
1078W	1" dia., Closed Loop, 1" Gap
1078CT	3/4" dia., Closed Loop, 7/8" Gap (3/8" in steel)
1078CTW	3/4" dia., Closed Loop, 2" Gap (3/4" in steel)

Note: Additional colors and variations may be available.



1125 Series

- Easy, press fit design
- Low-profile design for thin frame, or vinyl-clad and custom windows/doors
- Rare Earth, Mini-Max Magnet version provides extra power in a small footprint for steel doors with top channel available or other low-profile installation requirements
- 3/4" long, 3/8" diameter, closed loop
- Indoor or outdoor applications
- UL/ULC

Ordering Information

1125	Wire Leads, 1/4" Gap
R1125	Wire Leads, 1/2" Gap, Rare Earth Magnet
1125T	Screw Terminal, 1/2" Gap
R1125T	Screw Terminal, 1/2" Gap, Rare Earth Magnet
1125W	Wire Leads, 3/4" Gap
R1125W	Wire Leads, 7/8" Gap, Rare Earth Magnet
1125TW	Screw Terminal, 7/8" Gap
R1125TW	Screw Terminal, 7/8" Gap, Rare Earth Magnet

Note: Additional colors and variations may be available.



1075 Series

- Easy, press fit design
- Small ribs on the housing hold the contact in place
- Heavy-duty housing resists crushing from swelling wood
- Indoor or outdoor use on 1075 series
- Rare Earth, Mini-Max Magnet version provides extra power in a small footprint for steel doors with top channel available or other low-profile installation requirements
- UL/ULC

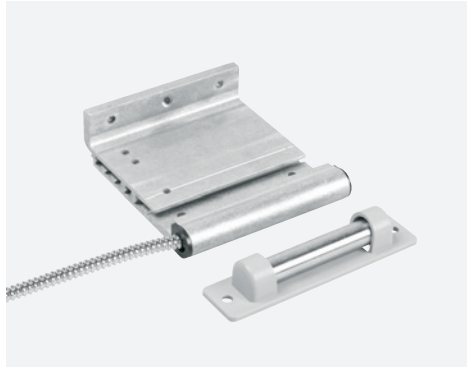
Ordering Information

1070-N	1/2" Gap, SPDT, White
1075	1/2" Gap, Closed Loop
R1075	1/2" Gap, Closed Loop, Rare Earth Magnet
1075W	1 1/4" Gap, Closed Loop

Note: Additional colors and variations may be available.

Magnetic Contact Sensors

OVERHEAD GARAGE DOORS, GATES & SPECIALTY MOUNT DOORS



2200 Series

- Low-profile miniature format, ideal for floor mounting
- Wide gap makes installation easy and helps prevent false alarms
- Fully sealed switch for corrosion protection
- Low profile
- Heavy-duty cast aluminum housing
- Stainless steel armored cable
- UL/ULC

2300 & 2500 Series

- Track mounting is faster and out of harm's way
- Designed for overhead doors
- Fits most door channel widths
- Heavy-duty extruded aluminum housing
- Wide gap distance permits faster installation and helps prevent false alarms caused by loose-fitting doors
- 2-ft. stainless steel armored cable
- UL

2700 Series

- High Security
- Low profile design
- Triple-biased reeds, highly resistant to defeat
- Includes magnetic field tamper and pry tamper plate
- Factory compensated for the effects of steel
- Suitable for outdoor use
- UL/ULC

Ordering Information

2202A-L & 2202AU-L*	3" Gap, Closed Loop, 18" Cable, Cast Housing
2204A-L & 2204AU-L*	3" Gap, SPDT, 18" Cable, Cast Housing
2205A-L & 2205AU-L*	3" Gap, Closed Loop, 36" Cable, Extruded HD Housing
2207A-L & 2207AU-L*	3" Gap, SPDT, 36" Cable, Extruded HD Housing
2207AD-L	3" Gap, DPDT, 36" Cable, Extruded HD Housing
2207AH-L	3/4" to 2-1/2" Gap, SPDT, 36" Cable, Extruded HD Housing

*Universal style magnet allows for greater installation flexibility.

Ordering Information

2302A-L	3" Gap, Closed Loop
2304A-L	3" Gap, SPDT
2315A-L	3" Gap, Closed Loop, Fits 1.5" to 2.4" tracks, Snap 'n Go
2317A-L	3" Gap, SPDT, Fits 1.5" to 2.4" tracks
2325A-L	3" Gap, Closed Loop, Fits 2.75" to 3.25" tracks, Snap 'n Go
2515A-L	6" Maxi-Gap, Closed Loop, 18" Cable

Ordering Information

2727A-L	11/16 to 2" Gap, SPDT, for Overhead Doors
2747A-L	11/16 to 2" Gap, SPDT, for Gates

ANSI Door Mounts

2757-L	0" to 3/8" Gap, SPDT, Recess Mounts for ANSI
2757D-L	0" to 3/8" Gap, DPDT, Recess Mounts for ANSI
2767-L	0" to 3/8" Gap, SPDT, Recess Mounts for ANSI, Adjustable

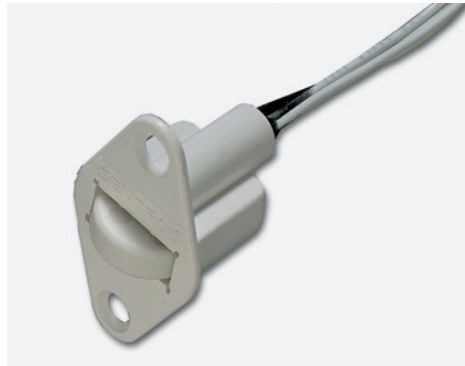


2800T Series

- Explosion Proof
- Designed for Maximum Security hazardous environments such as airports, transportation depots, military locations, chemical plants, nuclear power plants and coal mines
- Balanced, triple-biased SPDT switches make defeating with external magnets virtually impossible.
- Rugged die-cast aluminum for long life
- Concealed terminals resist tampering/shorting
- Convenient surface mounting, screws included
- Optional features include pry tamper loop for alarm in case of contact removal, current-limiting device for circuit protection, and a housing approved for Class 1 Group B and Class III environments
- UL/ULC Listed for Safe and Vault, Hazardous Location Classes Explosion-Proof, Hazardous Location Class I Groups C, D and Class II Groups E, F & G

Ordering Information

2804T-M	Up to 5/8" Gap, SPDT, Brown
2807T-M	Up to 5/8" Gap, SPDT, SW, Door, Brown
2814T-M	Maximum Security w/Guarded Housing, SPDT, Up to 5/8" Gap, Brown
2845T-M	Up to 1" Gap, Closed Loop, Brown
2847T-M	Up to 1" Gap, SPDT, Brown



Roller & Pin Plungers

- Can be hidden from view
- For door jambs or assets
- Single-hole mounting
- Less prone to debris than ball-rollers
- Pin plungers can be clip mounted as a tamper switch
- UL/ULC

Ordering Information

3005	Roller, Closed Loop, 1.5" Deep
3007	Roller, SPDT, 1.5" Deep
3008	Roller, Closed Loop, "Shorty" 3/4" Deep
3012	Pin, Closed Loop, for .04" to .07" Mount
30121	Pin, Closed Loop, for .08" to .12" Mount
3015	Pin, Closed Loop, 1/2" dia.
3025T	Self-adjusting Tamper Contact, Closed Loop

Note: Additional colors and variations may be available.



2100 Series

- Magnapull heavy-duty magnetic pull-apart style contact
- Protect valuable free-standing items such as office equipment, video systems, fence gates or other assets
- Available in mini and heavy-duty
- Installs easily and quickly
- Hermetically sealed

Ordering Information

2105A-G	HD, 3' Stainless Steel Cable, Closed Loop, Gray
2107A-G	HD, 3' Stainless Steel Cable, SPDT, Gray

Magnetic Contact Sensors

OVERHEAD GARAGE DOORS, GATES & SPECIALTY MOUNT DOORS



Bill Trap

- Self-adhering for easy installation
- Potted reed switch

Ordering Information

3555-B	SPDT, Black
------------------------	-------------



3040 Series

- Panic switches
- Low-profile design
- Silent activation
- Easy fingertip activation lever
- Available with or without LED indicator
- UL

Ordering Information

3040-W	Terminals, SPDT, LEDs, White
3040CT-W	Cold Temperature, SPDT, LEDs, White
3045-W	Terminals, SPST, White
3045CT-W	Cold Temperature, SPST, White



Wireless Personal Panic Device

- Activates police, fire or auxiliary alarms
- Water resistant (IP68 rating)
- Field replaceable battery
- 5+ year battery life (based on usage)

Ordering Information

TX-4200-01-1	White
TX-4200-01-2	Black

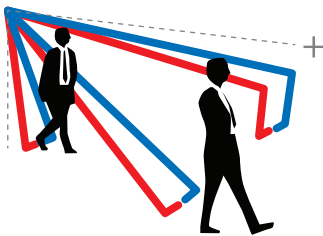
Magnetic Contact Sensors Selection Table

Magnetic Contact	Mounting	Gap	Standard Doors/ Windows	Steel Doors	Overhead Doors	Commercial	Industrial	High Security	Others	Specialty
1045 Series	Surface	Up to 3" (7.6cm)	✓	✓		✓				
1075 Series	Recess	Up to 1.25" (3.2cm)	✓	✓		✓				
1078/1076 Series	Recess	Up to 1" (2.5cm)	✓	✓		✓				
1085 Series	Surface	Up to 2" (5cm)	✓			✓				
1125 Series	Recess	Up to 7/8" (2.2cm)	✓	✓		✓				
2100 Series	Loose, Free Standing	NA			✓	✓	✓			Free-Standing Assets, Fences, OH doors
2200 Series	Floor, or Track/Gate	Up to 3" (7.6cm)			✓	✓	✓			
2300 Series	Surface or Track	Up to 3" (7.6cm)			✓	✓	✓			
2500 Series	Surface or Track	Up to 6" (15cm)		✓	✓	✓	✓			
2700 Series	Surface, Floor, Track/Gate, or ANSI	Up to 5/8" (1.6cm)		✓	✓	✓	✓	✓	Gates	High Security
2800T Series	Surface	Up to 1" (2.5cm)	✓	✓	✓	✓	✓	✓	Chemical, Military, Medical	Explosion-Proof
3040 Series	Surface	NA				✓			Retail, Schools, Medical	
Bill Trap	Surface - In Drawer	NA				✓			Retail	
Roller/Pin Plungers	Recess	NA	✓	✓		✓			Many	Tampers, etc.
Wireless Personal Panic Device	Wrist or Pendant	NA				✓			Retail, School, Banking	



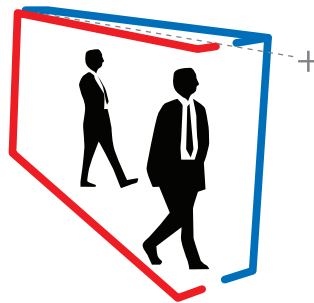
Motion Sensors

Used in some of the most high-risk applications, Interlogix™ motion sensors feature patented technology to deliver outstanding detection coverage. Superior mirror optics provide smooth, continuous focus over a large coverage area, while industry-leading sensor analytics can distinguish shape, duration, speed, size and environmental noise to offer true security and virtually eliminate false alarms.



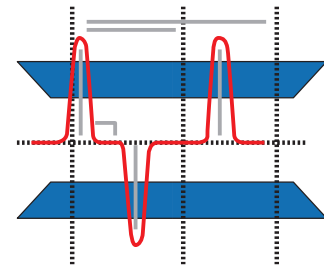
Typical Mirror and Fresnel Beam Detectors

Standard Industry detectors use multiple disparate beams that create spots of detection, which can be inaccurate.



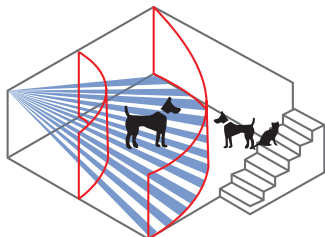
Step and Gliding Curtain Mirror Optics

Provide smooth, continuous, and automatic target focus over entire detection range.



Industry-Leading Sensor Analytics

Distinguish shape (1D), duration (2D), speed (3D), size (4D) and environmental noise (5D), for true security against false alarms.



Dual Tech

Patented Range-Controlled Radar + PIR requires dual trip and virtually eliminates false alarms outside an area.



Superior Mirror Optics

Superior mirror optics combines step focus and gliding focus optical systems in a single-mirror design, resulting in a powerful hybrid optical system.

MOTION DETECTORS / WALL & CEILING MOUNT



EV Series

- Superior coverage with step and gliding curtain mirror optics
- Environment processing – superior false alarm immunity with 5D signal processing
- Low power consumption
- Fast/easy installation
- UL/ULC
- Form A

Ordering Information

EV1012	9 Curtains, 40'
EV1012PI	9 Curtains, 40', Pet Immune
EV1116	11 Curtains, 50'



VE Series

- Superior coverage with step and gliding curtain mirror optics
- Vector enhanced – superior false alarm immunity with vector pattern recognition technology
- Low power consumption
- Fast/easy installation
- UL/ULC

Ordering Information

VE1120	11 Curtains, 65', Form A
VE735	11 Curtains, 200', Form A
VE736	11 Curtains, 200', Form C



PrecisionLine Series

- Dual-technology PIR and range-controlled radar for better catch protection or stealth operation
- UL/ULC

Ordering Information

RCR-C	35', Form C
RCR-50	50', Form C
RCR-PET	35' Pet Immune to 80 lbs., Form A



360° Dual Technology

- Dual-technology PIR and range-controlled radar for better catch protection or stealth operation
- Superior coverage with step and gliding curtain mirror optics
- Great false alarm immunity with 4D signal processing
- Low power consumption
- Fast/easy installation
- UL/ULC

Ordering Information

DD669-U	18 Curtains, 360°, 65'
----------------	------------------------

Motion Sensors

MOTION DETECTORS / **OUTDOOR, REQUEST TO EXIT & SPECIALTY**



Outdoor Motion Detectors

- Two independent passive infrared sensors to detect and confirm movement
- Dual-tech variant includes a PIR and microwave sensor which increases the effectiveness and accuracy of detection
- Sensor module is hidden behind UV rated thermal plastic
- Built-in EOL resistors
- 10 to 70 degree detection angle
- Masking sliders to modify field of view
- High dust and humidity resistance (IP65); selectable range control from 33' to 98'
- Operating temperature: -22°F to 149°F

Ordering Information

DI601	PIR
TX-2810-01-4	Wireless PIR
DDI602U-F1	Dual Technology: PIR & Microwave



Request-to-Exit

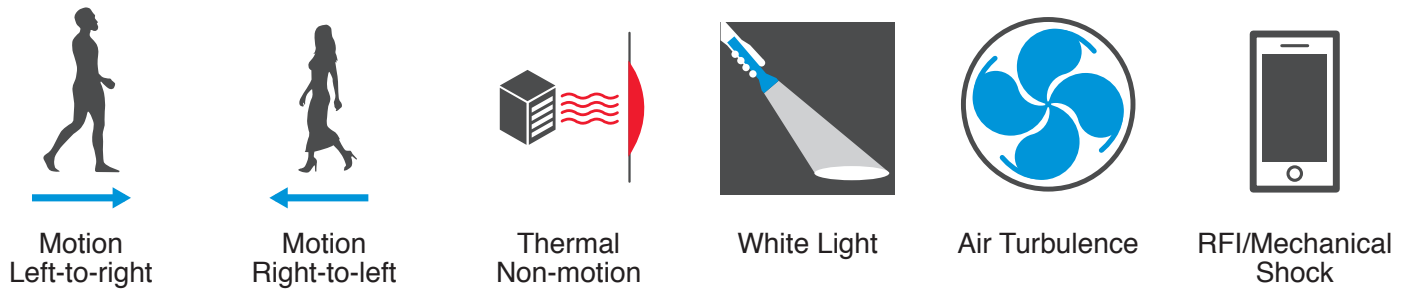
- Request-to-exit sensor used for secure door egress and door access control
- Patented, dual PIR and radar technologies are adjustable to provide precise detection and protection against defeat and false alarms
- Optimal defeat protection
- UL/ULC
- Great for high-traffic and sensitive areas
- Built-in adjustable sounder for door position monitoring
- Simple installation for walls or ceilings
- Two Form C relay outputs allow flexibility for configuring remote alarms
- Compatible with drive-up applications like shipping docks and auto service centers
- Wall plate included

Ordering Information

RCR-REX-W	DPDT, Form C, White
RCR-REX-B	DPDT, Form C, Black

Vector Enhanced

Patented pyro-electric sensor detects four elements, and features pattern recognition to detect direction and type of motion.



Motion Sensors Selection Table

Motion Detector	Range	Curtains	Signal Processing	Fresnel Lens	Mirror Optic	Dual Technology	Small Business	Commercial	High Security	Specialty
DI601	33/66/99' (10/20/30m)	NA	4D - Good	✓			✓	✓		Outdoor
DDI602U-F1	33/66/82' (10/20/25m)	NA	4D - Good	✓		✓		✓	✓	Outdoor
DD669-U	65' (20m)	18	4D - Good		✓	✓		✓	✓	360° Ceiling Mount
EV1012	40' (12m)	9	5D - Better		✓			✓		
EV1012PI	40' (12m)	9	5D - Better		✓			✓		Pet Immune
EV1116	50' (16m)	11	5D - Better		✓			✓		
RCR-50	20-50' (6-16m)	NA	4D - Good	✓		✓	✓	✓		
RCR-C	9-35' (3-10m)	NA	4D - Good	✓		✓	✓	✓		
RCR-PET	9-35' (3-10m)	NA	4D - Good	✓		✓	✓	✓		Pet Immune
RCR-REX	3-15' (1-5m)	NA	4D - Good	✓		✓		✓	✓	Use for REX applications
TX-2810-01-4	33/66/99' (10/20/30m)	NA	4D - Good	✓			✓	✓		Outdoor, Wireless
VE1120	65' (20m)	11	V2E - Best		✓			✓	✓	
VE735/VE736	up to 196' (60m)	11	V2E - Best		✓			✓	✓	

Glass & Shock Sensors



Glassbreak & Shock Sensors

Part of any comprehensive security system, Interlogix™ glassbreak and shock sensors use advanced acoustic and seismic technologies to deliver high-performance protection. ShatterPro sensors feature patented pattern recognition technology that recognizes the sound of breaking glass, while DV Series and assault sensors detect attempts to break into vaults, safes, ATMs and other reinforced physical areas.



ShatterPro Acoustic Glassbreaks

- Full 360° coverage pattern with 25' (7.5m) radius from sensor to glass
- Greater false alarm immunity with patented Pattern Recognition Technology
- UL/ULC

Ordering Information

5812A-W	Rectangular, Form A, Tamper, UL, White
5812NT	Rectangular, Form A
5812-RND	Round, Form A
5815NT	Rectangular, Form C, Tamper
5820A-W	Recess Mount, White
5822A-W	Recess Mount, Tamper, UL, White
5885-W	Dual Technology w/PIR, Form A, White

5400 Series

- Shock sensor
- Mounts on windows or doors, either on the frame or on the glass
- Adjustable sensitivity allows each installation to be fine-tuned, enhancing the sensor's detection and minimizing nuisance alarms
- UL/ULC

Ordering Information

5414-W	2-Wire, Lithium Battery, White
5414-M	2-Wire, Lithium Battery, Brown
5415A-W	2-Wire, Alarm Loop Reed Switch, Lithium Battery, White
5415A-M	2-Wire, Alarm Loop Reed Switch, Lithium Battery, Brown
5425-W	4-Wire, Latching LED Option, External Power, White
5425-M	4-Wire, Latching LED Option, External Power, Brown



DV Series

- Detects all known methods of attack against safes, vaults, walls ATMs, and metal cabinets
- Advanced signal processing
- Full-scale tamper protection
- Extremely low current draw
- Adjustable sensitivity
- UL/ULC

Ordering Information

DV1201A	Vault & Safe Sensor
DV1221A	ATM & Night Deposit Safes

Metal Enclosure Assault Sensors

- Identifies when metal is cut, sawed, impacted or drilled
- Protects enclosures up to 2' x 4' x 1'
- UL/ULC for vaults and safes

Ordering Information

5402-W	2-Wire, Lithium Battery, Gray
5422-W	4-Wire, Requires External Power, Gray

Glass & Shock Sensors Selection Table

Glass Break/ Shock Sensors	Mounting	Applications	Technology	Commercial	High Security
5400 Series	Surface	Doors/Windows	Seismic/Contact	✓	✓
5885	Surface	Doors/Windows	Acoustic/PIR	✓	✓
Assault Sensor	Surface	Small safes, Small metal enclosures	Seismic	✓	✓
DV Series	Surface	Vaults, ATMs, Safes, Walls, Ceilings	Seismic		✓
Shatter Pro	Surface, Recess	Doors/Windows	Acoustic	✓	

Interlogix™ is a leading provider of security and life safety solutions, including advanced video, recording and wireless transmission technology and both residential and commercial intrusion solutions. Through an ongoing commitment to secure and protect people, property and assets, Interlogix continues to develop innovative and reliable products that meet the demands of the modern world.

interlogix.com



Specifications subject to change without notice.

© 2014 United Technologies Corporation. All rights reserved.
Interlogix is part of UTC Building & Industrial Systems,
a unit of United Technologies Corporation.

403-3808 2014/05 (76823)