

## Overview

The 61xP series power supplies are designed to supply low voltage power for standalone fiber link modules. Models are available with either AC or DC outputs.

## Model Features

The 61xP plugs directly into a standard AC wall outlet, while the other models all have input power cables with attached plugs. The 613P and 614P have detachable power cables and may be used with input voltages ranging from 100 VAC to 240 VAC.

## Standard Features

- UL approved
- CSA approved
- Compact power supplies for standalone fiber links
- Low voltage outputs
- Models with AC or DC outputs
- Models for North American and international applications

# Power Supplies

61xP



# GE Security

U.S.  
T (561) 998-6100  
T 888-GE-SECURITY  
888-(437-3287)  
F 561 998 6224

Canada  
T 519 376 2430  
F 519 376 7258

Asia  
T 852-2907-8108  
F 852-2142-5063

Australia  
T 61-3-9239-1200  
F 61-3-9239-1299

Europe  
T 32-2-719-9847  
F 32-2-719-9846

Latin America  
T 305-593-4301  
F 305-593-4300

[www.gesecurity.com](http://www.gesecurity.com)

© 2005 General Electric Company  
All Rights Reserved

## Specifications

| Model 610P       |   |
|------------------|---|
| Input Power      | 117 VAC, 60 Hz, 16W                             |
| Output Voltage   | 12 VAC  |
| Output Current   | 1 A   |
| Power Connection | Plugs directly into standard wall outlet        |
| Dimensions       | 2.3" x 2.0" x 1.6"<br>58 x 51 x 41 mm           |
| Weight           | 0.64 lbs. (0.29 kg)                             |
| Model 613P       |   |
| Input Power      | 100-240 VAC, 60/50 Hz,<br>18W                   |
| Power Factor     | 10.4  |
| Output Voltage   | 13.5 VDC  |
| Output Current   | 1.3 A   |
| Power Connection | Connects to standard wall outlet with line cord |
| Dimensions       | 1.27" x 2.3" x 4.35"<br>32 x 62 x 106 mm        |
| Weight           | 0.79 lbs. (0.36 kg)                             |
| Model 614P       |   |
| Input Power      | 100-240 VAC, 60/50 Hz,<br>51W                   |
| Power Factor     | 21.6  |
| Output Voltage   | 13.5 VDC  |
| Output Current   | 2.7 A   |
| Power Connection | Connects to standard wall outlet with line cord |
| Dimensions       | 1.11" x 2.43" x 4.18"<br>28 x 62 x 106 mm       |
| Weight           | 0.83 lbs. (0.38 kg)                             |

### AGENCY COMPLIANCE



### MADE IN THE USA

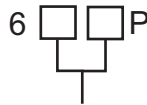
Complies with FDA Performance Standard for Laser Products, Title 21, Code of Federal Regulations, Subchapter J

## Related Diagram

Not Applicable

## Ordering Information

Use the Configurator below to select the options available for this product.



### Input/Output Rating

- 10** 115 VAC Input  
12 VAC Output @ 1 A
- 13** 100 - 240 VAC Input  
13.5 VDC Output @ 1.3 A
- 14** 100 - 240 VAC Input  
13.5 VDC Output @ 2.7 A

As a company of innovation, GE Security reserves the right to change product specifications without notice. For the latest product specifications, visit GESecurity online at [www.GESecurity.com](http://www.GESecurity.com) or contact your GE Security sales representative.  
61xP-2006-09-2



imagination at work