

NS3550-8T-2S Quick Installation Guide

Figure 1: NS3550-8T-2S Industrial L2+ Multi-Port Managed Ethernet Switch



Package contents

Thank you for purchasing the NS3550-8T-2S IFS L2+ industrial managed switch. The description of this model is as follows:

- Industrial L2+ 8-Port 10/100/1000T
- + 2-Port 100/1000X SFP Managed Switch

Unless specified, the term “industrial managed switch” mentioned in this quick installation guide refers to the NS3550-8T-2S.

Open the box of the industrial managed switch and carefully unpack it. The box should contain the following items:

- The industrial managed switch x 1
- Quick installation guide x 1
- CD with user manual x 1
- DIN rail kit x 1
- Wall mounting kit x 1
- Dust cap (see the table below)

	RJ45 Dust Cap	SFP Dust Cap
NS3550-8T-2S	8	2

If any of these are missing or damaged, contact your dealer immediately. If possible, retain the carton including the original packing materials for repacking the product in case there is a need to return it to us for repair.

Requirements

The industrial managed switch provides a remote login interface for management purposes. The following equipment is necessary for further management:

- Workstations running Windows® XP / 2003 / Vista / 7 / 8 / 2008 / 10, MAC OS X or later, Linux, UNIX, or other platforms are compatible with TCP/IP protocols.
- Workstations are installed with Ethernet NIC (Network Interface Card).
- **Serial port connection (Terminal)**
 - The above workstations come with a COM Port (DB9) or USB-to-RS-232 converter.
- **Ethernet port connection**
 - Network cables – Use standard network (UTP) cables with RJ45 connectors.
 - The above workstations have a web browser and JAVA runtime environment plug-in installed.

Note: We recommend using Internet Explorer 8.0 or later to access the industrial managed switch. If the web interface of the managed switch is not accessible, turn off the anti-virus software or firewall and then try it again.

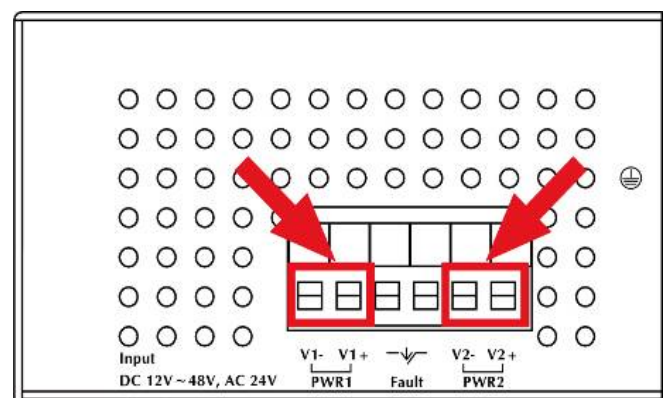
Wiring the power inputs

The upper panel of the industrial managed switch indicates a DC inlet power socket and consists of one terminal block connector within six contacts. Follow the steps below to insert the power wire:

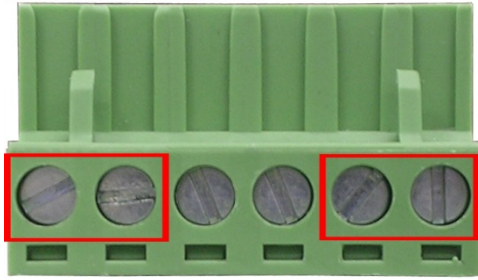
1. Insert the positive/negative DC power wires into contacts 1 and 2 for Power 1, or 5, and 6 for Power 2.

NS3550-8T-2S: DC 12 to 48 V

Figure 2: Managed industrial switch upper panel



- Tighten the wire-clamp screws to prevent the wires from loosening.



1 2 3 4 5 6
 V- V+
 Power 1 V- V+
 Power 2

	Positive (+) Pin	Negative (-) Pin
NS3550-8T-2S	Pin 2/6	Pin 1/5

Note: The wire gauge for the terminal block should be in the range from 12 to 24 AWG.

Mounting

Note: Ensure that the industrial managed switch is mounted vertically with the power connectors on the top and a minimum of three inches above and below the switch to allow for proper air flow. This device uses a convection flow of hot air which rises and brings cold air in from the bottom and out of the top of the device. Do not mount the switch horizontally as this does not allow air to flow up into the device and will result in damage to the switch. Do not tie DC1 to DC2. DC2 is for secondary power redundancy. Do not plug DC power into the device while the AC power cord is plugged in. This is not a hot-swappable switch. Hot-swapping this device will result in damage.

DIN-rail mounting installation

To replace the wall-mount application with DIN-rail application on industrial gigabit Ethernet switch, refer to the following figures to screw the DIN-rail on the industrial gigabit Ethernet switch.

To hang the industrial gigabit Ethernet switch, follow the steps below:

- Screw the DIN-rail on the industrial gigabit Ethernet switch.



- Place the bottom of DIN-rail lightly into the track.



- Ensure that the DIN-rail is secured to the track.



To remove the industrial gigabit Ethernet switch from the track, carefully pull out the bottom of the DIN-rail to remove it from the track.



Wall-mount plate mounting

To install the industrial gigabit Ethernet switch on the wall, follow the steps below.

- Remove the DIN-rail from the industrial gigabit Ethernet switch. Loosen the screws to remove the DIN-rail.
- Place the wall-mount plate on the rear panel of the industrial gigabit Ethernet switch.



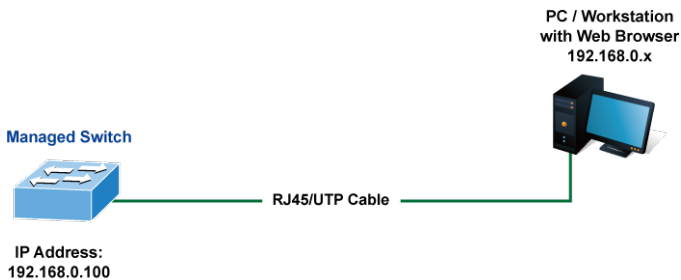
3. Use the screws to screw the wall-mount plate on the industrial gigabit Ethernet switch.
4. Use the hook holes at the corners of the wall-mount plate to hang the industrial gigabit Ethernet switch on the wall.
5. To remove the wall-mount plate, reverse the steps above.

Starting web management

The section describes how to start up the web management function for the industrial managed switch. Note that the industrial managed switch is configured through an Ethernet connection. Ensure that the manager computer is set to the same IP subnet address.

For example, if the default IP address of the industrial managed switch is 192.168.0.100, then the manager computer should be set to 192.168.0.x (where x is a number between 1 and 254, except 100), and the default subnet mask is 255.255.255.0.

Figure 3: IP management diagram

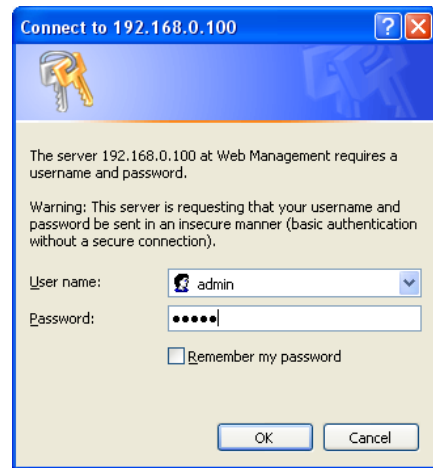


Logging in to the industrial managed switch

1. Use the Internet Explorer 8.0 or later web browser and type the IP address http://192.168.0.100 (the factory-default IP address) to access the web interface.
2. When the following dialog box appears, enter the default user name “admin” and password “admin” (or the password you have changed before) as shown in Figure 4 below.

Default IP Address: **192.168.0.100**
 Default User Name: **admin**
 Default Password: **admin**

Figure 4: Login screen



3. After typing the password, the main screen appears as shown in Figure 5 below.

Figure 5: Main web interface screen



4. The switch menu on the left side of the web page permits access to all the functions and status provided by the industrial managed switch.



Refer to the User Manual for further information about using the web management interface.

Note: For security purposes, change and memorize the new password after this first setup.

Saving the configuration

The running configuration file is stored in the RAM of the industrial managed switch. In the current version, the running configuration sequence of running-config can be saved from the RAM to FLASH by executing the Save Configuration command. After doing this, the running configuration sequence becomes the startup configuration file (i.e., the saved configuration).

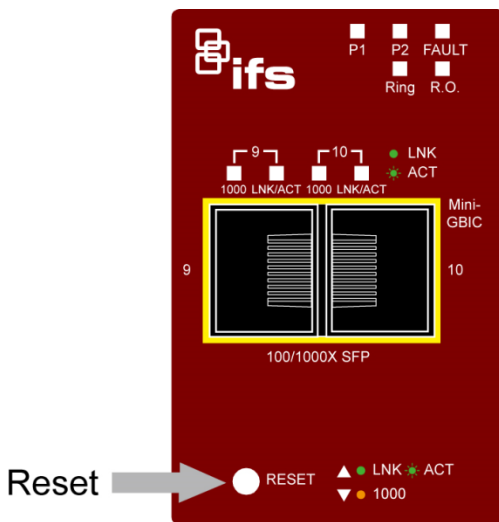
To save all applied changes and set the current configuration as a startup configuration, the startup-configuration file is loaded automatically across a system reboot.

1. Click **System > Configuration Backup**.
2. Click the **Save Configuration** button.

Resetting the switch to default

To reset the IP address to the default IP address “192.168.0.100” and the user password to factory default mode (default password is “admin”), press the hardware reset button on the front panel for about 10 seconds. After the device is rebooted, log in to the management web interface within the same subnet of 192.168.0.xx and default password. Note that all the previous setups are erased after the factory default reset.

Figure 6: Reset button



Contact information

North America

T +1 855.286.8889
E techsupport@interlogix.com
W www.interlogix.com/support

Latin America

T +1 561-998-6114
E latam@interlogix.com

Europe, Middle East, and Africa

W Select *Contact Us* at www.firesecurityproducts.com

Australia

E security.tech.support@interlogix.com.au
W www.utcfs.com.au/support