



TruVision DVR 42 Quick Start Guide

Copyright © 2014 United Technologies Corporation.

Interlogix is part of UTC Building & Industrial Systems, a unit of United Technologies Corporation. All rights reserved.

Trademarks and patents Trade names used in this document may be trademarks or registered trademarks of the manufacturers or vendors of the respective products.

Contact information www.interlogix.com or www.utcssecurityproducts.eu

EN

TruVision DVR 42 Quick Start Guide

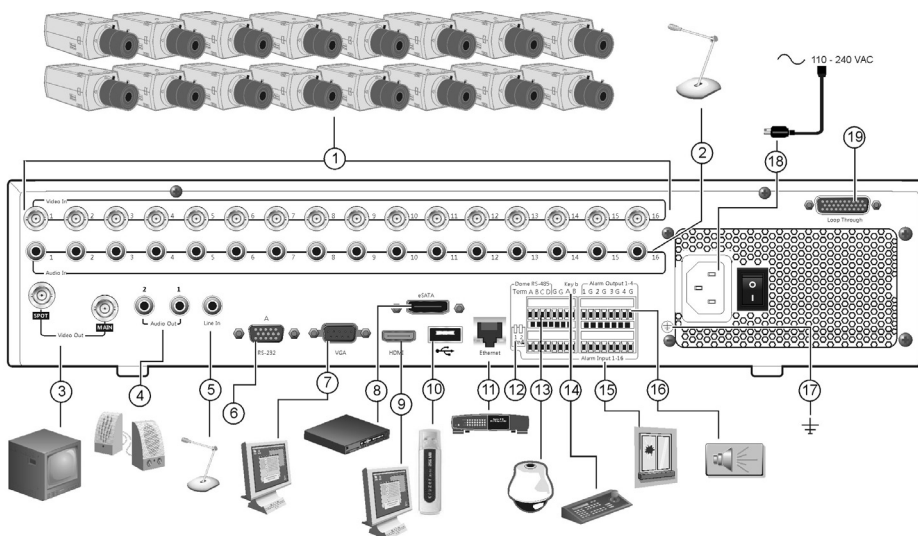


Figure 1: Back panel connections

1. Connect up to 16 analog cameras (depends on the DVR model).
2. Connect up to 16 audio inputs to RCA connectors.
3. Connect up to two CCTV monitors: Spot and main monitors
4. Connect to speakers for audio output.
5. Connect RCA connector to a microphone.
6. Connect up to a RS-232 device.
7. Connect one CCTV monitor (BNC-type connector).
8. Connect to an optional eSATA device such as SATA HDD, CD/DVD-RM.
9. Connect to a HDTV. The HDMI connection supports both digital audio and video.
10. Connect to an optional USB device such as a mouse, CD/DVD burner or HDD. The DVR supports both a USB DVD and a USB HD on the front and back USB ports.
11. Connect to a network.
12. Terminate the line to the dome cameras using this RS-485 switch. Default is Off.
13. Connect to a PTZ control.
14. Connect to a keyboard (KTD-405 shown)
15. Connect up to 16 alarm inputs.
16. Connect up to four alarm relay outputs.
17. Connect to ground.
18. Connect to a power supply.
19. Loop through for up to 16 analog cameras.

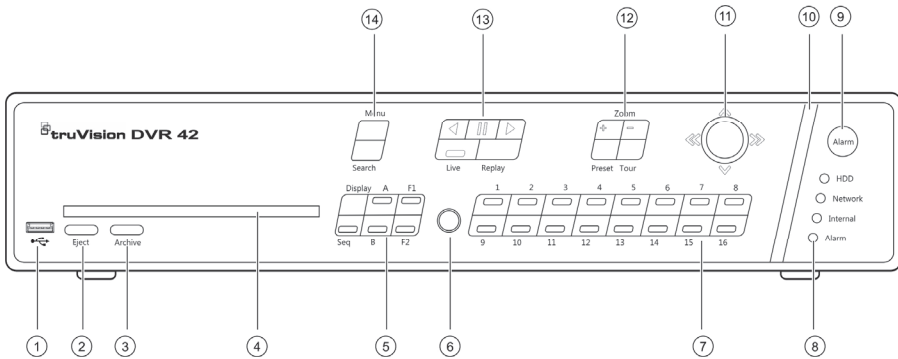


Figure 2: Front panel controls

1. USB port.
2. Press to eject CD/DVD disc.
3. Press to enter quick archive mode. Press twice to start archiving.
4. Insert CD or DVD disc.
5. Press **Display** to select the viewing mode (multiview or full screen), **A / B** to select the monitor, **Seq** to start/stop sequencing.
6. IR receiver.
7. Press to switch between different cameras in live view, PTZ control, or playback modes.
8. Status LEDs. Indicates the status of the HDD, network, and Watchdog, as well as whether there is an external alarm.
9. Press to manually acknowledge an alarm.
10. Alarm indicator bar blinks when there is an alarm.
11. Move the joystick to select options in menus and to control playback. Press for Enter. The LED arrows are lit when the jog is active.
12. Press to control digital zoom and to select presets and shadow tours.
13. Press to control playback, replay current playback file, and to return to live view mode.
14. Press to enter the main menu and advanced search modes.



Figure 3: Quick access toolbar

1. **Freeze:** Freeze live image of the selected camera.
2. **Manual recording:** Start/stop manual recording.
3. **Instant playback:** Play back the recorded video from the last five minutes.
4. **Audio:** Enable/disable audio output.
5. **Quick snapshot:** Capture a snapshot of a video image.
6. **PTZ control:** Enter PTZ control mode.
7. **Digital zoom:** Enter digital zoom.
8. **Image settings:** Modify the image lighting levels.
9. **Text show:** Display inserted text on screen.
10. **Close:** Close the toolbar.

Package contents

The TruVision DVR 42 (model TVR 42) is shipped with the following items:

- IR (infrared) remote control
- Two AAA batteries for the remote control
- AC power cords (US, Europe, UK)
- USB mouse
- TVR 42
- Video loop through cable
- CD with software and manuals
- *TruVision DVR 42 Quick Start Guide*
- *TruVision DVR 42 User Manual* (on CD)
- *TruVision Recorder Operator Guide* (on CD)

Installation environment

Refer to the user manual for detailed information, but observe these important requirements:

- Place the unit in a secure location.
- Ensure that the unit is in a well-ventilated area.
- Do not expose the unit to rain or moisture.

Quick install

Recommended steps for setting up the DVR:

1. Connect all the devices required to the back panel of the TVR 42. See Figure 1 on page 1.

Basic connections:

Connect the cameras to the BNC camera inputs and monitor A to the BNC, VGA or HDMI output. Connect the mouse to the USB port in the front panel.

Optional connections:

All the other connections shown are optional and depend upon installation requirements.

2. Connect the power cord to the unit and turn on the power.
3. Set up the unit with the required settings using the setup Wizard.

First-time use

The TVR 42 has an express installation wizard that lets you easily configure basic DVR settings when first used. It configures all cameras simultaneously. The configuration can then be customized as required.

By default, the setup wizard will start once the DVR has loaded. The wizard walks you through some of the more important settings of your DVR. Select the preferred language for the system and then enter the administrator password. The default admin password is 1234. It is strongly recommended that this password is changed.

The wizard will then guide you through the menus to set the time and date, network configuration, HDD management, and recording configuration.

When all the required changes have been entered, click **Finish** to exit the wizard. The TVR 42 is now ready to use. Recording starts automatically.

Operating the TVR 42

There are several ways to control the unit:

- Front panel
- IR remote control
- Mouse
- Web browser

Front panel

The buttons on the front panel control most functions. See Figure 2 on page 2 for the locations of the controls.

IR remote control

The IR remote control buttons are similar to those on the front panel. Place the two AAA batteries in the remote control.

To connect the remote control to the DVR:

1. Press **Menu** on the front panel or right-click the mouse and select **Menu**. The main menu screen appears.
2. Select **Display Mode Settings > Monitor**.
3. Check and remember DVR device address value. The default value is 255. The device address is valid for all IR controls.
4. On the remote control press the **Device** button.
5. Enter the device address value. It must be the same as that on the TVR 42.
6. Press **ENTER** on the remote control.

USB mouse

The USB mouse provided with the TVR 42 operates all the functions of the DVR, unlike the front panel, which has limited functionality. The mouse lets you navigate and make changes to settings in the user interface.

Connect the mouse to the DVR by plugging the mouse USB connector into the USB port on the front panel. The mouse is immediately operational and the pointer should appear.

Web browser control

The TVR 42 Web browser lets you view, record, and play back videos as well as manage all aspects of the DVR from any PC with Internet access. The browser's easy-to-use controls give you quick access to all DVR functions.

To access the unit, open a web browser and enter the IP address assigned to the DVR as a web address. In the log on screen, enter the default user ID and password:

- User ID: admin
- Password: 1234

The default values for TVR 42 network settings are:

- DHCP: Disabled by default.
- IP address - 192.168.1.82
- Subnet mask - 255.255.255.0
- Gateway address - 192.168.1.1
- Ports:

When using the browser:

RTSP port: 554

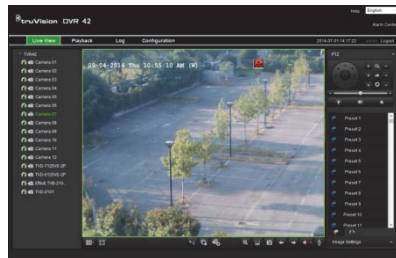
HTTP port: 80

When using TruNav:

RTSP port: 554

Server/Client software port : 8000

Figure 4: Web browser interface



Live view mode

Live mode is the normal operating mode of the unit where you watch live pictures from the cameras.

Regularly used functions in live view can be quickly accessed by clicking the left-button of the mouse on the camera image. The shortcut pop-up toolbar

appears. See Figure 3 on page 2 for a description of the functions available.

Configuring the TVR 42

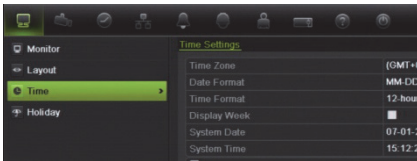
The TVR 42 has an icon-driven menu structure that allows you to configure the unit's parameters. Each command icon displays a screen that lets you edit a group of settings. Most menus are available only to system administrators.

Refer to the TVR 42 user manual for detailed information on configuring the unit.

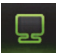



To access the main menu from live view:

- Press the **Menu** button on the remote control or front panel
 - Or -
- Right-click the mouse and select **Menu** from the pop-up menu.

The main menu screen appears. Move the mouse over a command icon in the menu toolbar and click to select it.



Description of the command icons in the menu toolbar:

-  Configures display settings.
-  Configures camera settings.
-  Configures recording settings.
-  Configures standard network settings.



Configures alarm settings.



Configures PTZ settings.



Configures user settings.



Configures system settings.



Provides reference information to the various toolbars and menus within the interface.



Provides access to logout, reboot and shutdown options.

Specifications

Power supply	100 to 240 VAC, 6.3 A, 50 to 60 Hz
Power consumption (without HDD or DVD-R/W):	
TVR 4204	≤ 35 W
TVR 4208	≤ 40 W
TVR 4216	≤ 45 W
Operating temperature	-10 to +55 °C (14 to 131 °F)
Relative humidity	10 to 90%
Dimensions (W x H x D)	445 x 470 x 90 mm (17.5 x 18.5 x 3.5 in.)
Weight	≤ 8 kg (≤ 17.6 lb.) (without HDD or DVD- R/W)

Contact information

For contact information, see
www.interlogix.com, or
www.utcssecurityproducts.eu

