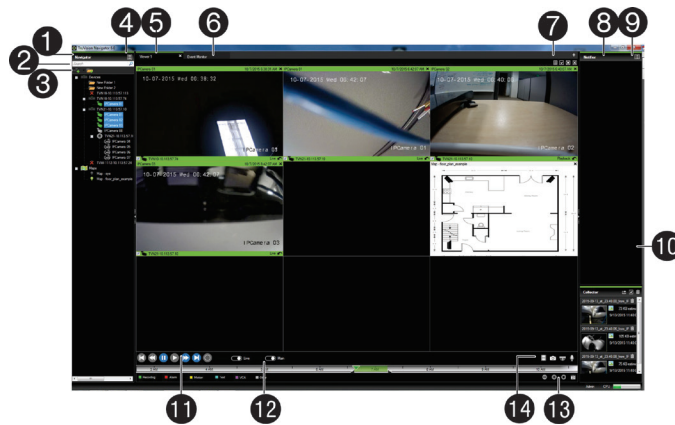






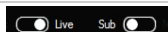




# TruVision Navigator 6.0 Quick Start Guide

This is the *TruVision Navigator Quick Start Guide*. This document provides basic instructions for installing and using TruVision Navigator.



- |    |   |
|----|---|
| 1  | Navigator Panel   |
| 2  | Search Dialog   |
| 3  |  Add Recorder and Add Folders Icons                      |
| 4  |  Settings, Show Selected Tasks, Help, and Logout Icons   |
| 5  | Viewer Panel: multiple tabbed viewing panels, up to 10  |
| 6  | Event Monitor Panel   |
| 7  |  Custom View, Toggle, Select All, Close All icons        |
| 8  | Notifier Panel  |
| 9  |  Details icon: Launches the Event Center                 |
| 10 | Collector Panel  Export, Select all, and Close All icons |
| 11 |  Playback controls                                       |
| 12 |  Live and Sub stream toggle controls                     |
| 13 |  Zoom In/Out, Center TimeLine, Go To Date icons          |
| 14 |  Save Video, Snapshot, PTZ, and Push to Talk icons       |

## Installation options

TruVision Navigator is made up of 3 components:

- Client
- Services
- Database

The TruVision Navigator architecture is flexible enough to allow all 3 of these components to co-exist on the same PC (i.e. a single Windows 7 machine) in small-scale environments.

As well, TruVision Navigator allows each of these 3 components to operate on separate machines (i.e. a virtual server for Services, a dedicated database machine for Database, and multiple PCs distributed on the network hosting Clients) for large-scale, distributed environments.

There are 2 installation options for TruVision Navigator:

- **Standalone Model** - This installation option allows the Client, the Database, and the Services to be located on the same machine. The one limitation is that no other Clients on the network can connect to the database on this machine. This installation option is ideal for small, standalone systems.
- **Multi-Client Model (i.e. Client/Server)** - This installation option allows the Client, the Database, and the Services to be located on the same or separate machines. This installation option is ideal for larger systems with many geographically dispersed users, PCs, and recording devices.

Whatever installation option you choose, the core features, and functions of TruVision Navigator remain the same.

You will need Administrator's rights on the machine to install the application, but the software will be available to all users who successfully log on to a Windows account on that machine.

## Installation

To install TruVision Navigator on your computer, do the following:

1. Place the TruVision Navigator setup.exe on the desktop of the PC.
2. Launch the InstallShield Wizard by double-clicking the TruVision Navigator setup.exe to begin the installation. **Note:** TruVision Navigator will look for the application prerequisites and notify you of any actions to be taken.

3. The Install Shield Wizard will auto-run to show the installation instructions. Follow these instructions to completion.
4. Reboot your machine for the installation to complete by clicking on the Finish button.
5. A TruVision Navigator icon will be placed on your desktop and in your Start Menu to access the application.

**Note:** Refer to TruVision Navigator v6.0 User Manual to see instructions on for installations on Windows 8 Operating System.

## Logging in for the first time

Launch TruVision Navigator using one of the following methods:

- Double-clicking on the TruVision Navigator icon on your desktop
- Start – All Programs – TruVision Navigator 6.0

When TruVision Navigator launches, a login window displays. Log in as the default Administrator with:

- Username - **admin**
- Password - **admin**

Once logged in, you will be prompted to change the password. This protects the security of the default Administrator's credentials.

## Adding a single device

Upon successful login, add a single device to the Navigator by doing the following:

1. Click the **Add Device** button in the Navigator. Select one of the two options: Add Manually, or, Add via Discovery Tool.
2. If **Add via Discovery Tool** option is selected, then select one or multiple devices from the discovered devices list, and click Add button.

**Note:** Discovery Tool will attempt to add devices by using their default credentials. If credentials of a device are previously changed from default values, device is still going to be added to the device tree, but will be shown as offline. In this case, updated credentials need to be applied manually by user from the device properties or configuration menu with a right click on the device.

If Add Manually option is selected, select the appropriate Device Type from the drop-down menu in Add Device window and follow below instructions.

3. Enter a **Device Title**. Values are alphanumeric.
4. Enter the device's static **IP Address**. You can also add a device using a Domain Name System (DNS) name. Simply place the DNS name in the IP Address field on the form.
5. Enter the device's listen **Port**. This field is pre-populated with a default value based upon the type of device you selected. If you changed this port on the device, add that specific port in this field.
6. Based on your device type, you may need to select a **Streaming Type**. For some devices, there is only one option for the Streaming Type so it is selected by default.
7. Enter the **Username** and **Password**. This field is only required if the device being added has been configured to require a username and password.
8. Click **OK**.

**Note:** After you click OK, fields highlighted with a red exclamation point indicate rejected values. Place your mouse pointer over the exclamation points for tips on why your values were invalid. All fields must be valid to successfully add a device.

9. Your device should appear under the Device node in the Navigator. Expand the device icon to view your cameras.

**Note:** You may see an error message stating that your device was added but it has unsupported firmware. However, you should still be able to view video and perform other basic functions.

10. Double-click or drag & drop camera(s) to the Viewer to display video.

## Help

Click *Help* (blue question mark icon) in the application status bar to launch the full TruVision Navigator user manual, where more detailed instructions are available on all topics.

## Contact information

[www.interlogix.com](http://www.interlogix.com) or [www.utcssecurityproducts.eu](http://www.utcssecurityproducts.eu).

For customer support, see [www.interlogix.com/customer-support](http://www.interlogix.com/customer-support).

© 2016 United Technologies Corporation

Interlogix is part of UTC Climate, Controls & Security, a unit of United Technologies Corporation. All rights reserved.