

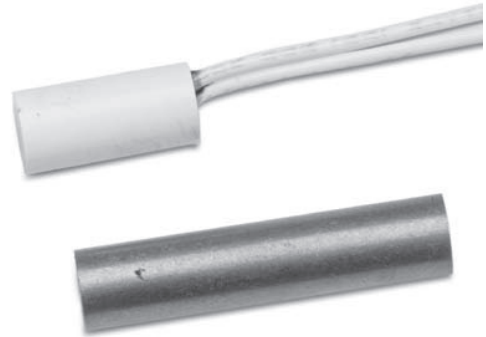
1058 series recessed magnetic contacts

recessed stubby magnetic contacts with wire leads
1/4 in. dia.

The 1058 series of magnetic contacts is designed for tight-fitting installations. The 1/4-inch diameter makes the contacts perfect for applications such as casements or awning-style windows and security screens.

The contacts can be either recessed or surface mounted in window frame channels, and are difficult to detect in recessed door applications.

Each contact includes a hermetically sealed reed switch that is potted in the housing.



Specifications

Voltage:	100 VAC/VDC max.
Current:	0.5 A max.
Power:	7.5 W max.
Loop type:	Closed
Electrical configuration:	Normally open
Gap distance:	Up to 1/2 in.
Lead type:	1 ft. #22 wire
Dimensions:	0.563 in. L x 0.25 in. dia. (14 x 6.4 mm)
Housing:	Flame retardant ABS plastic
Colors:	White, mahogany brown
Regulatory:	UL

Ordering information

1058-N	Recessed stubby contact with wire leads, 1/4 in. dia., wide gap, 1/2 in. gap size, white
1058-M	Recessed stubby contact with wire leads, 1/4 in. dia., wide gap, 1/2 in. gap size, mahogany brown

- 1/4-inch diameter allows for recessed or surface mounting
- Attractive, added security of recessed mounting
- Perfect for window screen protection
- Versatile, compact size

