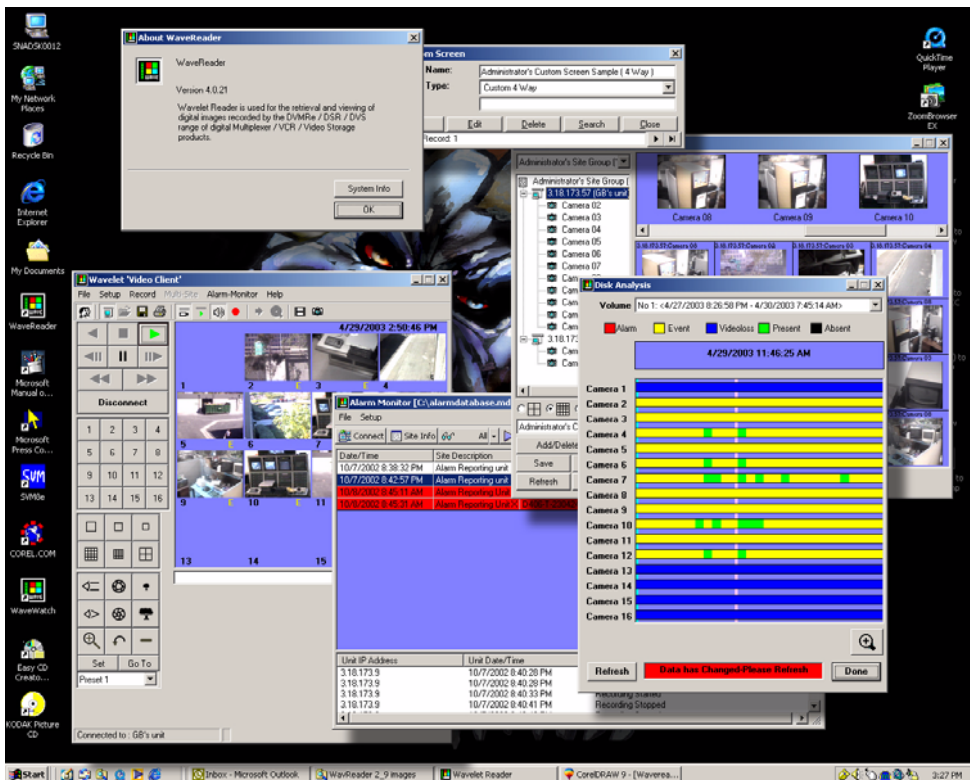


WaveReader 4.2 User Manual



Copyright Copyright © 2005, GE Security Inc. All rights reserved.

This document may not be copied in whole or in part, or otherwise reproduced except as specifically permitted under US copyright law, without the prior written consent from GE.

Document number/revision: 0150-0143R.

Disclaimer The information in this document is subject to change without notice. GE, in keeping pace with technological advances, is a company of product innovation. Therefore, it is difficult to ensure that all information provided is entirely accurate and up-to-date. GE accepts no responsibility for inaccuracies or omissions and specifically disclaims any liabilities, losses, or risks, personal or otherwise, incurred as a consequence, directly or indirectly, of the use or application of any of the contents of this document.

This publication may contain examples of screen captures and reports used in daily operations. Examples may include fictitious names of individuals and companies. Any similarity to names and addresses of actual businesses or persons is entirely coincidental.

Trademarks and patents GE and the GE monogram are registered trademarks of General Electric. The WaveReader product and logo are registered trademarks of GE Security.

Other trade names used in this document may be trademarks or registered trademarks of the manufacturers or vendors of the respective products.

Software license agreement GE software supplied with GE products is proprietary and furnished under license and can be used or copied only in accordance with the license terms.

THE ENCLOSED PROGRAM IS FURNISHED SUBJECT TO THE TERMS AND CONDITIONS OF THIS AGREEMENT. RETENTION OF THE PROGRAM FOR MORE THAN 30 DAYS, OPENING OF THE SEALED WRAPPER, IF ANY, SURROUNDING THE PROGRAM, OR USE OF THE PROGRAM IN ANY MANNER WILL BE CONSIDERED ACCEPTANCE OF THE AGREEMENT TERMS. IF THESE TERMS ARE NOT ACCEPTABLE, RETURN THE UNUSED PROGRAM AND ANY ACCOMPANYING DOCUMENTATION TO GE FOR A FULL REFUND OF THE LICENSE FEE PAID. (FOR INFORMATION REGARDING THE RETURN OF PROGRAMS ENCODED OR INCORPORATED WITHIN EQUIPMENT, CONTACT THE NEAREST GE SALES OFFICE.)

Intended use Use this product only for the purpose for which it was designed; refer to the data sheet and user documentation. For the latest product information, contact your GE sales representative or visit us online at www.gesecurity.com.

FCC compliance This equipment has been tested and found to comply with the limits for a Class A digital device, pursuant to part 15 of the FCC Rules. These limits are designed to provide reasonable protection against harmful interference when the equipment is operated in a commercial environment. This equipment generates, uses, and can radiate radio frequency energy and, if not installed and used in accordance with the instruction manual, may cause harmful interference to radio communications.

You are cautioned that any changes or modifications not expressly approved by the party responsible for compliance could void the user's authority to operate the equipment.

Contact Direct all inquiries about GE's legal policies with regard to this product to:

Director of Legal Services
GE Security
12345 SW Leveton Drive
Tualatin, OR 97062-9938 USA

Contents

Introduction	1
Conventions used in this document.....	1
Safety terms and symbols	1
Product Overview	2
Product Description.....	2
Features	2
Minimum System Requirements.....	3
Getting Started	4
Installation	4
Starting WaveReader	4
WaveReader Reference	8
WaveReader Main Window Overview	8
The Main Program Window	9
Changing Languages	13
WaveReader Operation	14
The File Menu	14
The View Menu	16
The Setup Menu	19
The Security Menus.....	22
Security Menu Sub Menus.....	23
Connection Type Setup	29
Network Speed Setup.....	32
Image Quality Setup	33
Setup DVMRe Menu.....	34
The Record Menu	36
The Search Menu	37
Multi-Site Mode.....	43
The Alarm Monitoring Menu.....	50
The Help Menu	53
Using WaveStudio	55
Opening WaveStudio	55
WaveStudio Toolbar	55
WaveStudio Main Viewing Area.....	56
Opening a File in WaveStudio	57
Dome Pan/Tilt/Zoom Control	58
Entering PTZ Mode.....	58
Panning And Tilting	58
Nudge	58
Auto-Center	59
Camera Controls	59

QuickWave Evidence Capture CD	61
Creating The QuickWave CD	61
Playing The QuickWave CD	61
Creating a QuickWave CD using the CD Wizard	61
SplitWave	63
Installing SplitWave	63
SplitWave Operation	63
Contacting technical support	65
Online publication library	65

Introduction

This is the *GE WaveReader User Manual*. This document includes an overview of the product and detailed instructions explaining:

- how to view live and recorded video over a network and
- how to perform basic and advanced searches on recorded video.

There is also information describing how to contact technical support if you have questions or concerns.

To use this document effectively, you should have the following minimum qualifications:

- a basic knowledge of CCTV systems and components; and
- a basic knowledge of electrical wiring and low-voltage electrical connections.

Read these instructions and all ancillary documentation entirely before installing or operating this product. The most current versions of this and related documentation may be found on our website. Refer to [Online publication library](#) on page 65 for instructions on accessing our online publication library.

Note: A qualified service person, complying with all applicable codes, should perform all required hardware installation.



Conventions used in this document

The following conventions are used in this document:

Bold	Menu items and buttons.
<i>Italic</i>	Emphasis of an instruction or point; special terms.
	File names, path names, windows, panes, tabs, fields, variables, and other GUI elements.
	Titles of books and various documents.
Monospace	Text that displays on the computer screen.
	Programming or coding sequences.
<i>Blue italic</i>	Hyperlinks to cross-references, related topics, and URL addresses.

Safety terms and symbols

These terms may appear in this manual:

 CAUTION	<i>Cautions</i> identify conditions or practices that may result in damage to the equipment or other property.
	<i>Warnings</i> identify conditions or practices that could result in equipment damage or serious personal injury.

Product Overview

Product Description

WaveReader provides you the ability to view video over Ethernet directly from:

- Digital video recorders (DVR and StoreSafe models).
- Digital video multiplexer recorders (DVMRe and DVMRe Triplex).
- Digital single channel recorders (DSR).
- Digital video storage (DVS) devices.

WaveReader also allows you to view or play video that has been archived onto a CD-R, DVD, or recorded directly onto the hard drive of a PC.

Features

- Main window for viewing live or recorded video.
- Disk analysis window provides graphical overview of recorded data on a per camera basis.
- Remote access to DVMRe menu systems.
- Images can be captured, printed, and exported as a bitmap or JPEG file.
- Images can be enhanced using WaveStudio, as well as while viewing in real time.
- Basic and advanced searches launched from a single interactive search window.
- Advanced search filters that include alarm/event, text, camera, time, and date over multiple site locations.
- Motion search by camera on DVMRe Triplex.
- Advanced retail text searches that include text strings and conditional text.
- Alarm Monitoring.
- QuickWave evidence capture CD.
- Remote Pan/Tilt/Zoom camera control.
- Russian, French, and Polish languages selectable via Windows Control Panel.
- Multi-Site Mode, which allows users to view camera images from multiple DVMRe Triplexes simultaneously on user definable screens.
- WaveReader now supports live and recorded audio when connected to a DVMRe Triplex.

Minimum System Requirements

The following minimum system requirements must be met before software installation.

Table 1. Minimum system requirements

Hardware	Specification
CPU	Pentium III 1.2 GHz or faster
RAM	256MB
Hard disk drive	50 MB free hard drive space
Monitor	SVGA, 1024 X 768, 24 bit color
Operating system	Windows® 2000/XP

Windows® 2000/XP are registered trademarks of Microsoft Corporation

Getting Started

Installation

Installing From CD-ROM

To install the WaveReader on your hard disk from a CD:

1. Place the WaveReader CD in the CD-ROM drive of a PC that meets the minimum system requirements.
2. Follow the instructions for installation as they appear.

Note: If Autorun is not enabled on your PC, choose Run from the Start Menu, then type d:\setup.exe (where “d” is the drive letter of your CD-ROM) and click OK. Follow the instructions as they appear on your screen.

Starting WaveReader


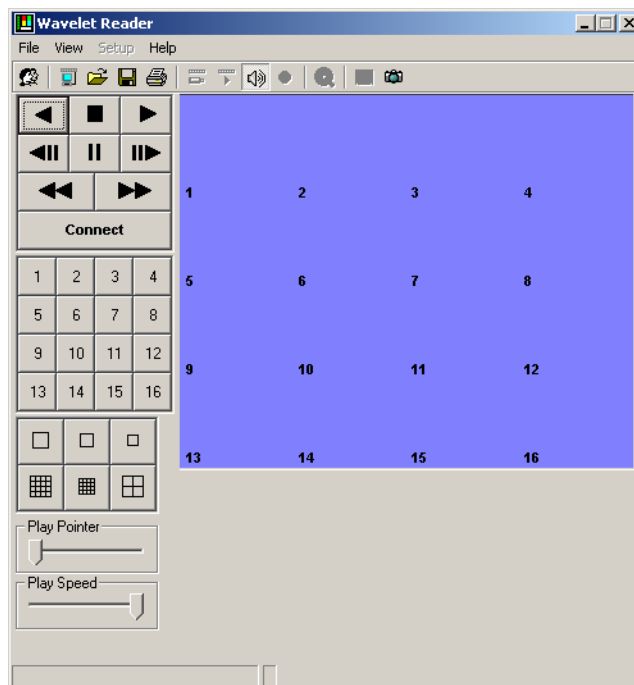
To start the WaveReader program, double-click on the WaveReader Desktop icon  or choose **Programs** from the **Start** menu and then select **WaveReader**. The Main window of the WaveReader program will appear.

Figure 1. Initial WaveReader screen



Logging In

To start using WaveReader you must **Log In** and connect to a remote device through the address book. When logging in you will be asked for a **User Name** and **Password**. The default Administrator password is **12345**. The Setup menu becomes available after a successful login.

There are three ways to **Log in** and start using WaveReader:



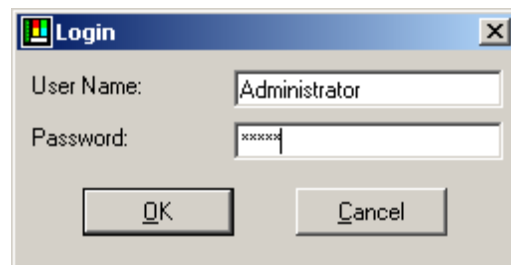
1. From the Menu Bar click **File**, then Log In. The Login screen will appear.
2. Click the **Login** icon  on the Icon Bar. The Login screen will appear.
3. Click the **Connect** icon  on the Icon Bar. The Login screen will appear. After a successful login the address book will appear. This login method is the quickest way to connect to a device.

Figure 2. Login Screen



GE recommends that the user name and password be changed after the installation is complete by the system administrator, see [The Security Menus](#) on page 22. As a security measure, store the password in the administrator's secure files or in a limited access area.

After a successful login, the Setup menu becomes available in the Main Menu. The Setup menu contains the following menu items:

- **The address book**
- Security settings
- Connection type setup
- Network speed setup
- DVMRe menu setup

If you logged in using method 3 from above the address book will automatically display. If you used methods 1 or two, move your mouse to the menu bar and click on **Setup/Address Book**.

The Address Book is a comprehensive relational database consisting of the following fields:

- **Site Description**
- Street Address
- City
- State/Province
- Zip/Postal Code
- Region/Country
- **IP Address**
- **Ethernet** (Connection type)
- **Unit Type** (VSR, SymNet, or IP Camera)
- **Camera Quantity**
- Serial Number
- Administrator of Unit
- Contact Phone Number
- Notes (4 fields)

The fields that are **bolded** above are the minimum amount of information that WaveReader requires to connect to a remote device.

Figure 3. The Address Book

Site Description	Street	City	State/Province	Zip/Postal Code	Region/Country	IP/Phone No.	Ethernet/POTS	Unit Type	Camera QTY	Serial No.	Administrator of Unit	Contact Phone N
DVMRe						10.90.253.20	Ethernet	DVMRe	16			
DVS						10.90.253.37	Ethernet	DVS	16			
POS Unit						10.90.253.150	Ethernet	DVMRe	16			
DVMRe						10.90.253.172	Ethernet	DVMRe	16			
DVMRe						10.90.253.110	Ethernet	DVMRe	16			
DVMRe						10.90.253.45	Ethernet	DVMRe	16			
NTSC DSR						10.90.253.111	Ethernet	DVMRe	16			
PAL DSR						10.90.253.112	Ethernet	DVMRe	16			
DVS						10.90.253.24	Ethernet	DVMRe	16			
MV3						10.90.253.47	Ethernet	DVMRe	16			
Second MV3						10.90.253.46	Ethernet	DVMRe	16			
triplex						10.90.253.60	Ethernet	DVMRe	16			
Building 1						10.90.253.70	Ethernet	DVMRe	16			
DVS						10.90.254.10	Ethernet	DVMRe	16			
MV3 2						10.90.253.40	Ethernet	DVMRe	16			
MV3						10.60.254.01	Ethernet	DVMRe	16			
triplex						10.90.253.69	Ethernet	DVMRe	16			
DVS						10.90.253.64	Ethernet	DVMRe	16			
Hardware Store						10.80.253.100	Ethernet	DVMRe	16			
Online Chatting						10.90.254.20	Ethernet	DVMRe TriStar	16			

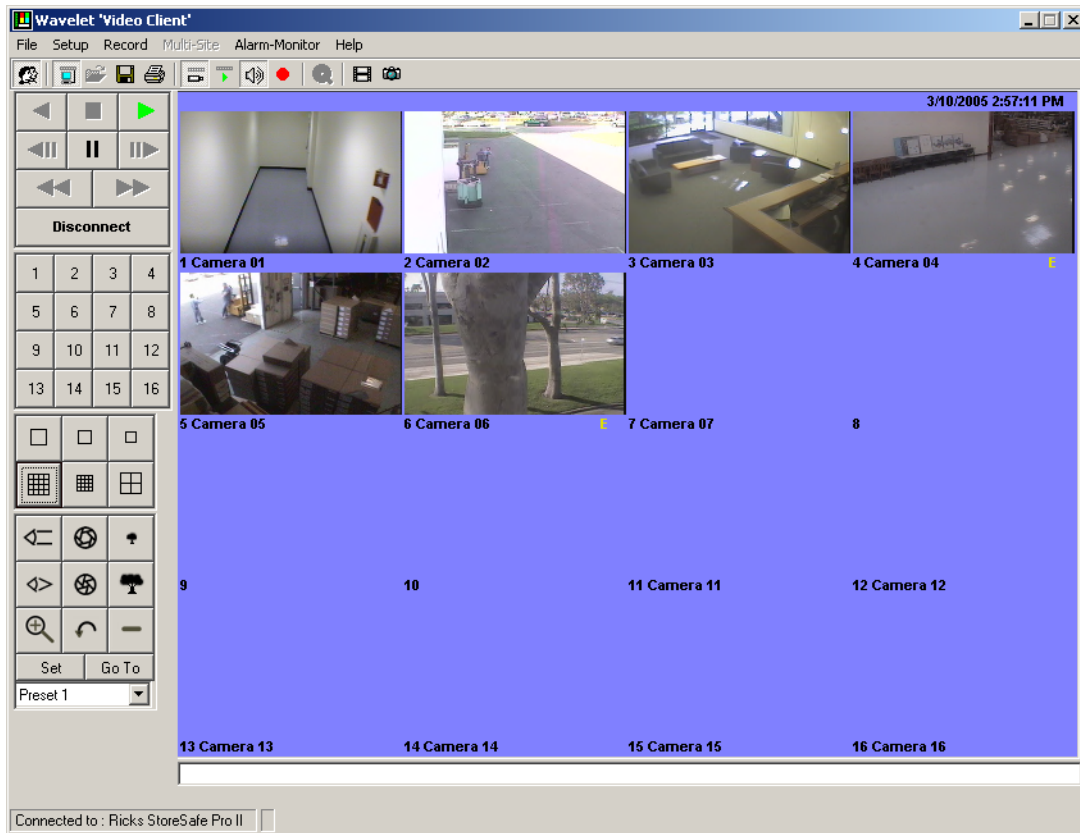
Column: All Reset Selected Rows Only Export Print

Search: Go! Edit Connect Close

Connecting to a Site/Device via the Address Book

Highlight a selection on the Address Book and double-click or click on the **Select** button. WaveReader will attempt to add the device/site to the site tree and start showing video using the parameters specified in the database (see Figure 3). See [Site Administration](#) on page 25 for information on creating and editing entries in the Address Book. If WaveReader cannot connect to the device/site it will display a time-out message. Verify that the parameters in the Address Book are correct. If the parameters are correct verify that the PC can connect to the Internet or to another ethernet connected device.

Figure 4. WaveReader Screen after a successful login

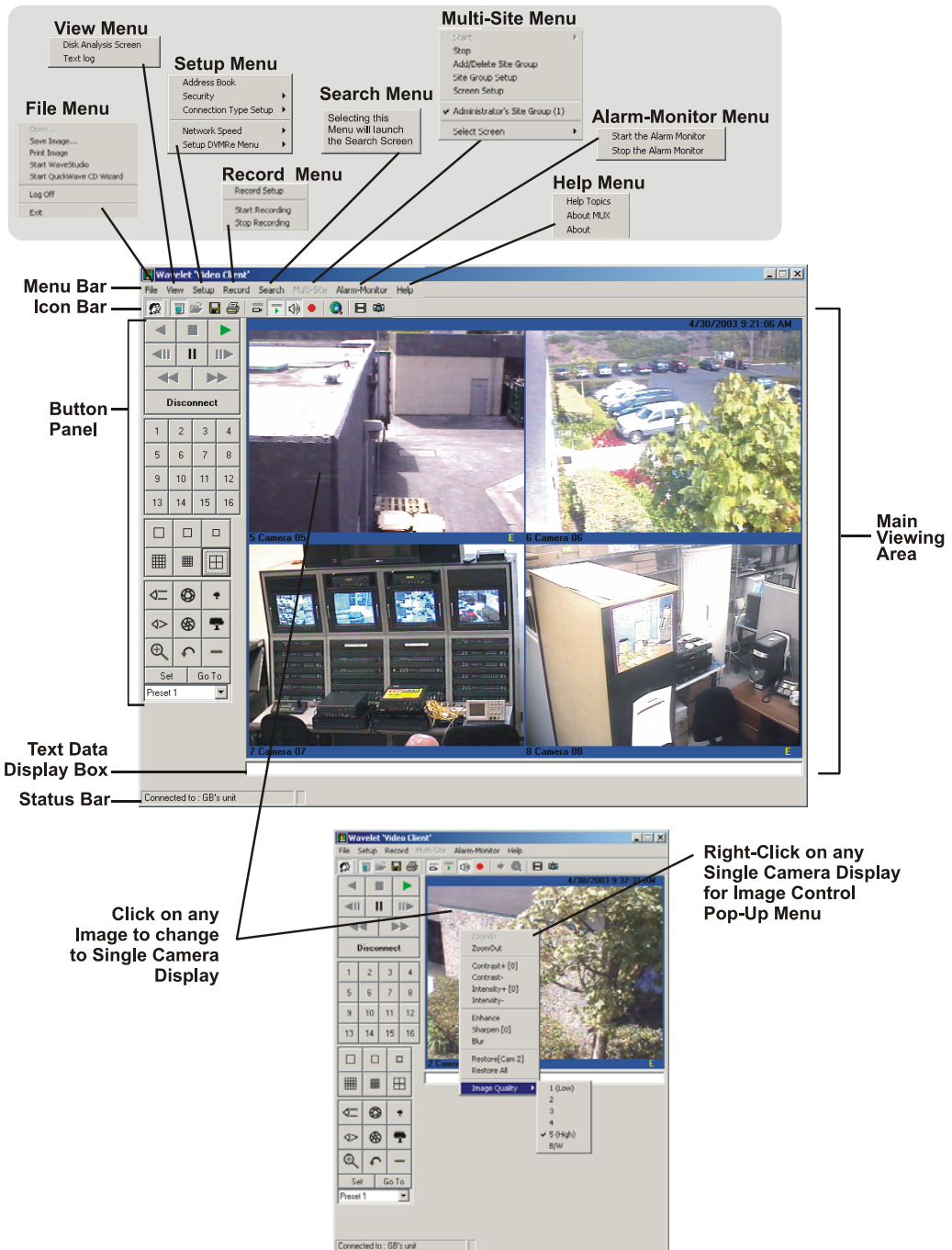


The figure above shows a connection to a StoreSafe Pro II with 6 cameras connected.

WaveReader Reference

WaveReader Main Window Overview

Figure 5. Main window overview



The Main Program Window

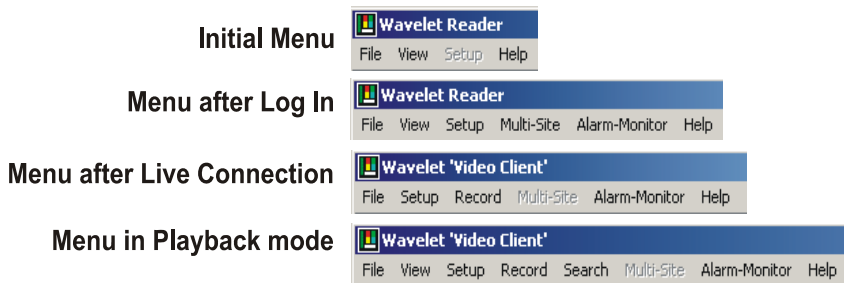
The Main program window consists of the following areas:

- **The Menu Bar:** At the top of the window.
- **The Icon Bar:** Underneath the Menu Bar.
- **The Main Viewing Area:** The large main area.
- **The Status Bar:** At the bottom of the window.
- **The Button Panel:** The left side of the window.
- **The Text Data Display Box:** Located under the Main Viewing Area.
- **Image Control Pop-Up Menu:** Right-click on a Single Display.

The Menu Bar

The Menu Bar provides access to the programs functions and parameters, as well as access to files. The Menu Bar changes its appearance to reflect the program mode it is operating in.

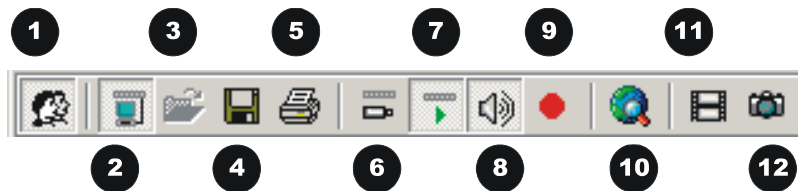
Figure 6. The menu bar



The Icon Bar

The Icon Bar provides one-click access to program functions and parameters, as well as access to files.

Figure 7. The Icon Bar



1.	Log in: Use to log in to a unit.
2.	Connect/Disconnect: Click to connect and launch the address book or disconnect.
3.	Open files: Opens mpc and mpg files for playback.
4.	Save: Save files
5.	Print: Prints images displayed in the main viewing area.

6.	Live mode: Selects live look-in mode.
7.	Playback mode: Selects playback mode.
8.	Audio On/Mute: Toggle audio on or off.
9.	Record button: Toggles recording on or off.
10.	Search menu: Launches the search dialog window.
11.	WaveStudio: Launches WaveStudio.
12.	Snapshot: Click to capture images.

The Main Viewing Area

Video is displayed in this area. Video display order is according to the information encoded by the unit used to create the original video data file. Currently selected video is indicated by a light blue bounding box.

The Status Bar

The Status Bar displays messages and current connection status information such as the IP address and recording speed in pictures per second (pps). If the user is viewing data recorded as files on a CD-ROM or stored on the user's PC, the path name information is displayed on the status bar.

The Button Panel

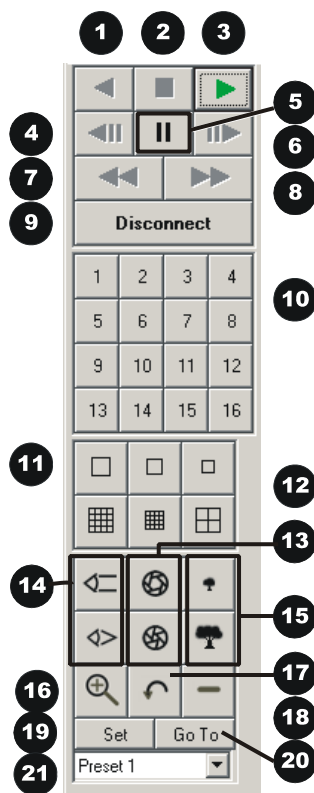
The button panel contains various controls for camera selection, viewing and playback. The lower portion of the button panel controls the various features available with PTZ (pan, tilt, and zoom) cameras. Please see your dome or PTZ camera installation manual for setup information.

The Playback Pointer and Play Speed indicator

The playback pointer provides a visual indication of the current playback position of a file during playback. This pointer moves in 2 MB increments so on smaller files the pointer will only move from the start position to the end position.

The playback speed indicator provides a visual indication of playback speed.

Figure 8. The button panel



1. **Play Backward button:** Click on this button to playback video in reverse.
2. **Stop button:** Click on this button to halt all playback operations. The Play Pointer Slider Bar moves to the start of data.
3. **Play Forward button:** Click on this button to playback video.
4. **Single Frame Rewind button:** Click on this button to rewind the video a single frame.
5. **Pause button:** Pauses playback until the Pause button is pressed again. Clicking any of the buttons, except Stop will also resume playback. The Play Pointer slider bar stays at the current position while paused.
6. **Single Frame Advance button:** Click on this button to advance the video a single frame.
7. **Rewind button:** Click on this button to perform high-speed reverse playback.
8. **Fast Forward button:** Click on this button to perform high-speed playback.
9. **Connect/Disconnect button:** Click on this button to display the address book (after a successful login).
10. **Number buttons:** Press any of these buttons to call up individual cameras for display. When connected to a unit that has more than 16 cameras, right-clicking over the number buttons will display numbers 17 through 32. Right-click again to return to cameras 1 through 16.

11. **Single Camera Display Size:** Choose from Small, Medium, or Large.
12. **Multiscreen button:** Choose from a Large 4-way, Medium 16-way, or Large 16-way.
13. **Iris Open and Close:** Click and hold the Iris Open or Close buttons to lighten or darken the image, and adjust for changing light conditions.
14. **Focus In and Out:** Click and hold the Focus In or Out buttons to operate lens focus.
15. **Zoom In and Out:** Click and hold the Zoom In or Out buttons to operate the camera lens zoom.
16. **Auto Zoom In:** Click the **Auto Zoom In** button, then click and draw a rectangular window on the currently displayed image with the left mouse button. Once the button is released, the camera will automatically zooms to the drawn window. If the window size is beyond the camera's zoom capabilities, the image will center on the middle of the defined window at the maximum zoom-in position.
17. **Return – Previous button:** Click on this button to return the camera to the PTZ position that was selected prior to the last Auto Zoom In command.
18. **Zoom All:** Click on this button to zoom all the way out on the currently selected camera.
19. **Set Preset:** Navigate the camera to the desired location, select the desired preset from the drop down list box, then click **Set**.
20. **Go To:** To send the camera to the desired preset, select the preset from the drop down list box, then click **Go To**.
21. **Preset:** Drop down list of preset camera positions created with the **Set Preset button**.

Activated Button Indicator

When the Play Forward, Play Reverse, Fast Forward, and Rewind buttons are clicked, the icon color changes from black to green. When the Pause button is clicked, the icon color changes from black to red.

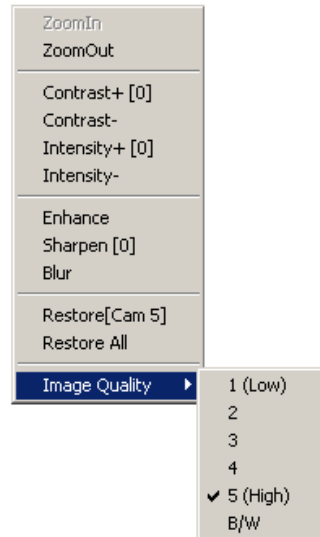
The Text Data Display Box

The Text Data Display Box shows any encoded text associated with the current video image.

The Image Control Pop-up Menu

Right-click on any single camera display and the Image Control Pop-up menu appears. Select any command to perform the selected action on the current image. Once the image enhancements are applied, doing a "restore" will not display the original image. This "restore" will be applied to future images from that camera. The enhancements only affect the way the image is viewed and do not affect the actual image itself.

Figure 9. The image control pop-up menu



The following video enhancements are available on this menu:

- Image Selection by Camera Number (when multiscreens are displayed)
- Zoom In and Zoom Out.
- Contrast
- Intensity
- Enhance
- Sharpen
- Blur
- Restore (Current Camera)
- Restore All
- Image Quality from 1 (low) to 5 (high) and B/W.

Note: The image quality settings are not available on the StoreSafe Pro II.

Changing Languages

WaveReader can be setup in one of four languages, **English, French, Russian, or Polish**. English is the default language. To change the language open the **Windows Control Panel** and select **Regional Options/Locale**, then select the language.

WaveReader Operation

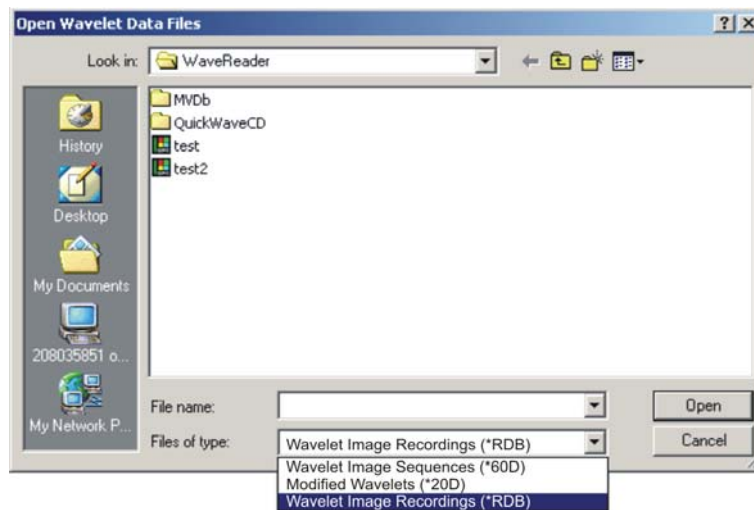
This section details the operation of WaveReader through the commands located in the menu system.

The File Menu

Open File

From the Menu Bar, click **File**, then click **Open** or click the **Open** icon on the Icon Bar. The Open files dialog box will appear (depending on the operating system, some windows may differ from the one shown here).

Figure 10. The open file dialog box



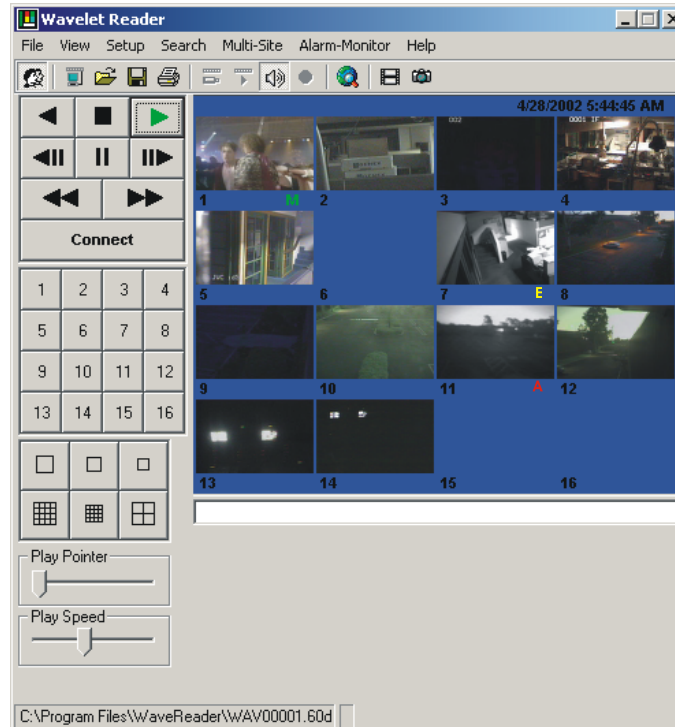
1. Select the drive and the directory that contains the video files that you want to open.
2. Select the file type from the drop down menu.

Note: WaveReader can open the following filetypes:

- 60d is a wavelet video clip in a proprietary data format. The file sizes are in multiples of 2Mb.
- rdb saves images in a database and is typically used for shorter video clips. This type of file loops back and continues to play after reaching the end of the video.
- 20d is similar to the 60d except this format is used for the StoreSafe Pro II.

3. Select the file for display and click on the **Open** button.
4. The file will load, but will not start playing until the play forward button is depressed. The play forward button turns green to indicate when play operations have started.

Figure 11. WaveReader playing a file



The screen shown above is the medium format 16-way multiscreen camera view. Clicking any camera image will display that camera image in full screen.

Conditional Indicators

The following conditional indicators can be displayed during playback:

- A red letter **A** opposite the camera number means an alarm occurred on that camera.
- A yellow letter **E** opposite the camera number means an event occurred on that camera.
- A green letter **M** opposite the camera number means that motion has been detected on that camera.

Save Image

From the Menu Bar, click **File**, and then click **Save File** or click the **Save File** icon on the Icon Bar. The **Save Current Image to A File** window will appear. The currently displayed video image may be saved with the user specifying the file name to be used, and the file type (*.bmp or *.jpg) to be chosen. (The asterisk stands for the file name.)

The benefit to this method as opposed to using the Snapshot icon is that the images can be saved with a more appropriate file name that better describes the picture's content rather than letting the software automatically assign a numerically sequenced file name.

The disadvantage to using this method is that playback operations continue while the user is interacting with the dialog box and specifying the file name. If the user misses seeing portions of the video, it will be necessary to replay those sections again so that they may be viewed without further distractions.

Print Image

From the Menu Bar click **File**, then **Print Image** or click the **Print Image** icon on the Icon Bar. The Print Image menu allows the user to print whatever is displayed in the Main Viewing area using your default windows printer.

Start WaveStudio

WaveStudio is an image enhancement program designed specifically for use with WaveReader. WaveStudio allows the user to capture and save images. WaveStudio also allows the user to increase or decrease contrast, zoom, sharpen lines, enhance sections of the picture, and bring out detail in dark areas. For information on how to use WaveStudio, please see [Using WaveStudio](#) on page 55.

Start QuickWave CD Wizard

When WaveReader is running on a PC that has DirectCD® Version 3.0 or higher installed, the Wizard can be used to automate the process of creating a QuickWave CD.

1. Select **File**, then **Start QuickWave CD Wizard** from the menu to launch the Wizard. (If this menu item does not appear in the menus, then the CD writing software could not be detected on the PC and the Wizard cannot be used.)
2. The Wizard will guide you through the CD creation process.

Log In/Off

From the Menu Bar click **File**, then **Log In** or click the **Log In** icon on the Icon Bar. The Login screen will appear. The default Administrator password is 12345. It is recommended that this password be changed after installation is complete. As a security measure, store the password in the administrator's secure files or in a limited access area. After a successful login, the log in commands change to log off and the Setup menu becomes available in the Main Menu bar.

Exit

From the Menu Bar click on **File**, then **Exit**. This command terminates the WaveReader program and closes all associated windows.

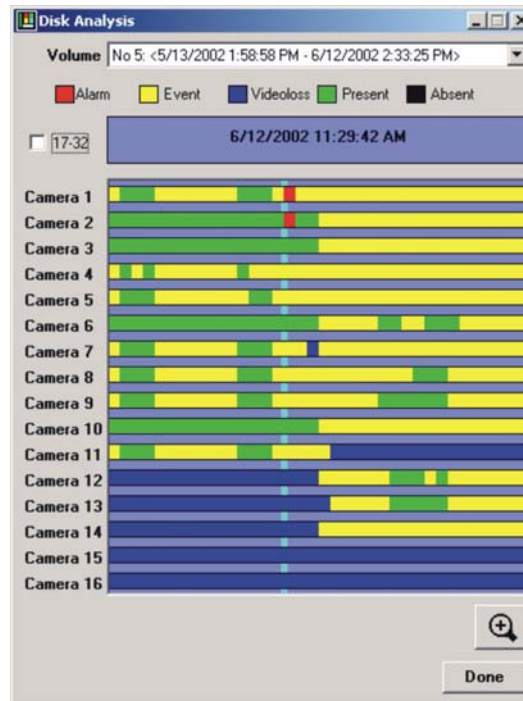
The View Menu

The View menu appears between File and Setup menus. The following commands are available in the View menu:

- **Disk Analysis Screen:** This command displays the Disk Analysis screen.
- **Text Log:** This feature allows the user to view any text associated with the video.

The Disk Analysis Screen

Figure 12. The disk analysis screen



The **Volume** drop down list box provides for selection of alternate hard disks if available.

The **blue area** below the legend displays the time/date of the disk area pointed to by the mouse cursor. When selecting a block of data this area will display the start and end time and date of the selected block.

Horizontal color bars indicate the following:

- **Green:** Standard Video
- **Black:** Camera Disabled or Absent
- **Red:** Alarm Mode
- **Blue:** Video Loss
- **White:** End of Disk
- **Yellow:** Events
- **Orange:** Activity

Vertical Color cursors indicate the following:

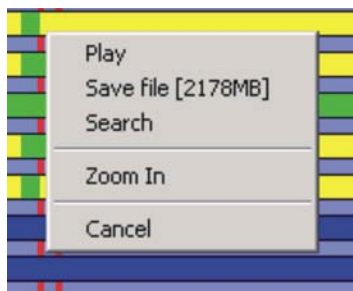
- **Light Blue:** Play indicator, positioned by progress slider bar.
- **Pink:** Record Marker indicates the current recording position on a multi-volume unit.
- **Red:** Left and right markers to assist with defining boundaries for data retrieval, etc. Click and Drag to the right to place the red cursors in the desired position.

Zoom In and Out using the **Magnifying Glass**, or follow the prompts after clicking on the data bars.

Clicking the left mouse button in the Disk Analysis screen displays a Pop-Up menu with the following commands:

- Play
- Save File (with selected file size)
- Search (Opens the Event Search Filters Screen)
- Zoom In
- Cancel

Figure 13. Disk analysis pop-up



To retrieve previously recorded video, click and drag (with the left mouse button) over the data bars. Use the magnifying glass to get a more detailed selection. The Pop-Up menu will display the estimated file size of the selected video.

Once a selection has been made the above commands may be executed.

The Volume drop down list box

When looking for video from a particular date on the drop down list box, please note that the oldest data is continually being recorded over with the newest video. One of the listed disk volumes will contain both the oldest and newest video data.

Figure 14. The volume drop-down list



For example: If searching for video on 5/15/2002, you should select volume No.6, not volume No.5.

Saving A File From The Disk Analysis Window

This feature is only available during an ethernet connection.

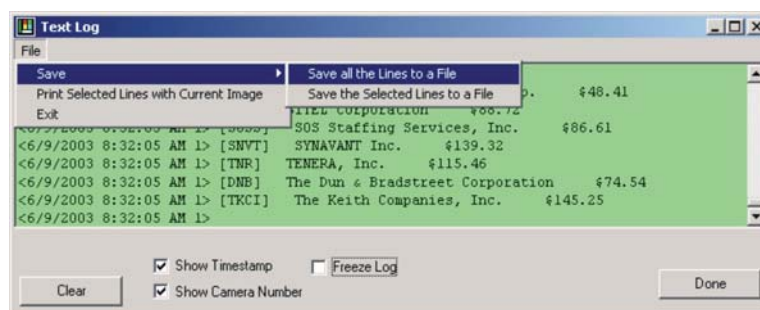
1. Click and drag the mouse to select the desired data you wish to save. Use the Zoom In and Out function to select smaller blocks of data to save.
2. Click and drag the vertical red bars to alter the size of the selected information.

3. Click **Save File** in the pop-up menu. The Save an Image Sequence window will appear.
4. Select the desired file name and location, then click Save.

The Text Log

WaveReader allows the user to view any text associated with video while connected to a unit or playing back video from a 60d file. Select **View / Text Log** from the Menu bar. The Text Log will appear.

Figure 15. The text log

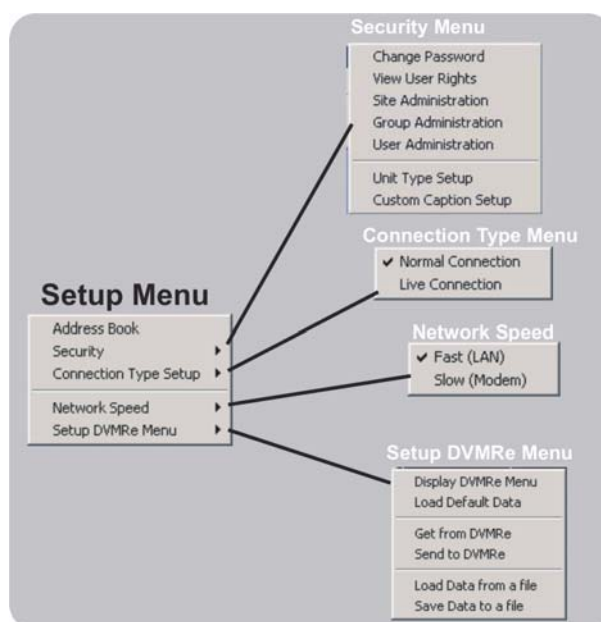


Other options include the ability to Print or Save the Text Log. The Text information is save as a txt file in the QuickWave CD folder by default.

The Setup Menu

The Setup menu is not enabled when the program first starts. It is enabled only after a successful login.

Figure 16. The setup menu



The following menus are disabled after a connection is established between WaveReader and a Device:

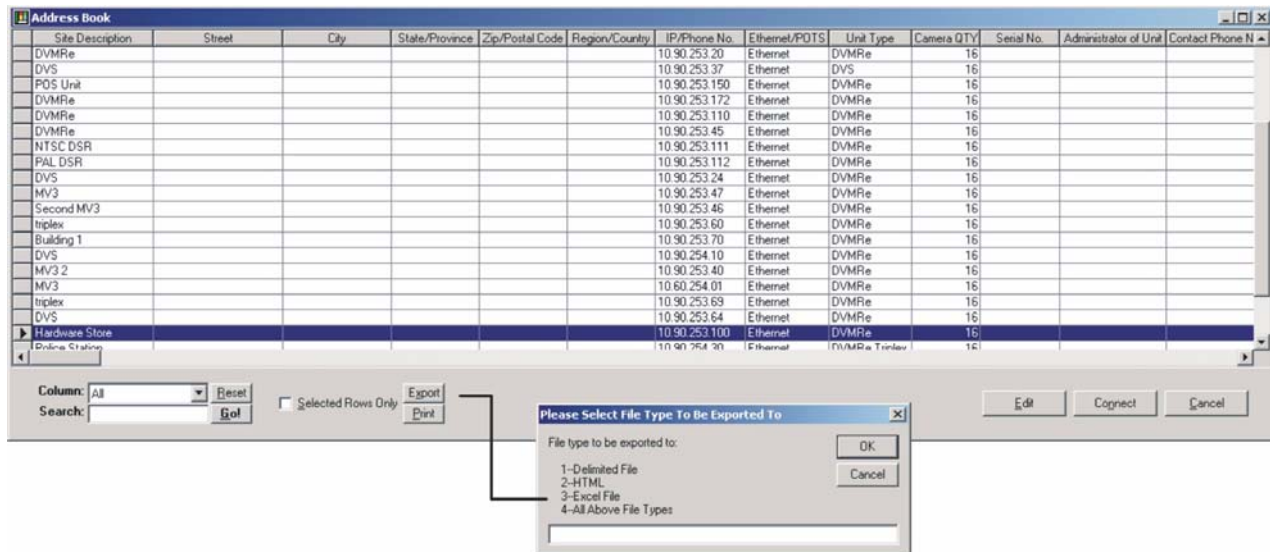
- The Address Book
- Connection Type Setup
- Security

The Address Book

The Address Book is a comprehensive relational database consisting of the following fields:

- Site Description
- Street Address
- City
- State/Province
- Zip/Postal Code
- Region/Country
- IP Address/Phone Number
- Ethernet/POTS (Connection type)
- Unit Type (DSR, DVMRe, etc.)
- Camera Quantity
- Serial Number
- Administrator of Unit
- Contact Phone Number
- Notes (4 fields)

Figure 17. The address book



The lower portion of the Address Book contains groups of command buttons. See the illustration above.

Use the **Column/ Search** fields to perform searches by category and keyword.

Use the **Export** button to send the Address Book data into one of or all the following filetypes:

- A Delimited File
- An HTML File
- An Excel File

Use the **Print** button to send the Address Book data to the default printer in a spreadsheet-like format.

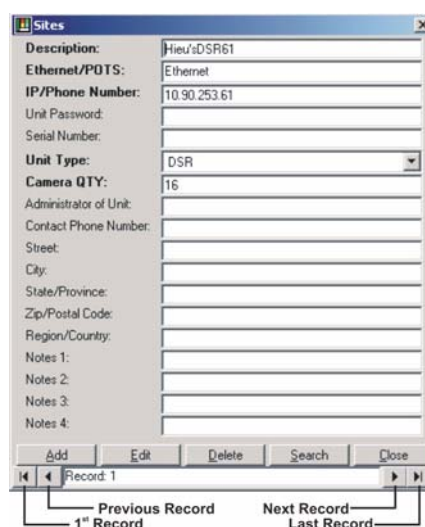
Connecting to a Site/Device via the Address Book

Highlight a selection on the Address Book and double-click, or click on the **Connect** button. WaveReader will attempt to connect to the device/site using the parameters specified in the database. See [Site Administration](#) on page 25 for information on creating and editing the Address Book. If WaveReader cannot connect to the device/site it will display a time-out message. Verify that the parameters in the Address Book are correct. If the parameters are correct verify that the PC can connect to the Internet or to another ethernet connected device.

Editing the Address Book

To edit the Address Book, click on the **Edit** button. The Site edit window will appear.

Figure 18. Editing the address book



This window allows the user to:

- **Add** new device/site information. Clicking on ADD also provides the option of importing an Address Book that has been saved as a lst file from a previous version of WaveReader
- **Edit** existing records.
- **Delete** existing records.
- **Search** through current records by the Site Description, IP/Phone Number, Street, City, State/Province, Zip/Postal Code, or Region/Country fields.

Note: A Unit Password is not required if the unit's password is left in its default (1111). If the Ethernet password is changed on the unit, the unit password in the Sites window must be entered and must match exactly.

The Security Menus

Security Shell Overview

The Security Shell is designed to provide controlled access to multiple Digital Recorder units by multiple users. The following definitions are used in the discussion below:

- **User:** A person that uses the WaveReader to review data stored on a Digital Video Recorder (DVR).
- **Group:** A collection of Users that have specific access rights to a specific list of Sites.
- **Site:** A specific Digital recorder with a unique IP address.

Users are assigned to specific Groups. Any number of Groups can be defined. Every user can only belong to one Group. The default Group is called the Administrator group and cannot be deleted from the database. Users that are assigned to the Administrator Group have full access rights to all Sites in the Database. The Administrator is the default user in the Administrator group. Examples of Groups names would be: Management, Engineering, Supervisor and Shipping.

Only Users who belong to the Administrator Group have access to all administrative functions – all other users are only allowed to change their own passwords and to view their user rights.

All groups except the Administrator group have specific sites that are associated with them. Every Site in the database can be associated with any number of Groups. A Group also has access rights that can be set up that apply to all Sites in the Group. A Supervisor Group for example might have the right to do Pan, Tilt and Zoom on all Sites associated with the group.

A Group may also be set up to have unique access rights on a per Site basis. The administrator can specify for each site belonging to the group, which cameras can be viewed by the group's users. For example, the users that belong to group 'A' can only view cameras 1 to 8 from a specific site whereas users belonging to Group 'B' are only allowed to view cameras 9 – 16 from the same site.

Using the Security database from multiple computers.

When WaveReader has been installed on several networked computers, it is possible to use only one central database that can easily be maintained by the Administrator.

During the installation of WaveReader on a clean Computer, the Security Database is copied to the WaveReader folder. The filename is WRSecurity.mdb. This file can be moved to a drive on the network that can be accessed from the PC. The WaveReader then has to be instructed where the database is located. This is done as follows:

Using any ASCII editor like Notepad, open the file BWVAL.DAT that is located in the WaveReader folder. Edit or add the following line to reflect the new position of the database on the network: (The part following the '=' is the network path of the WRSecurity.mdb file).

```
SECURITY_DB_PATH_AND_FILENAME = P:\Security\WRSecurity.mdb
```

Be sure to remove the letters "REM" that may come before the string. The next time WaveReader is launched it will get its Security settings from the network database. Several Computers can be set up this way to simultaneously access the same database file.

If the WRSecurity.mdb file is not moved to the network, each WaveReader will simply access the database on its local hard drive and the site and user information will have to be added to every database individually.

Additional Notes

It is recommended that the Administrator always add at least 1 user beside himself to the Administrator group. If he forgets his password, the other user can still log in and reset the Administrator's password. If all users in the Administrator group forget their passwords, they would have to contact GE Technical Support to have their passwords reset.

Uninstalling WaveReader from a PC will not remove the BWVAL.DAT file or the WRSecurity.mdb database file from the WaveReader folder. When the new WaveReader is installed, a user will be able to log into the old database without any additional setup.

Security Menu Sub Menus

WaveReader features extensive security and administrative options. From the Menu Bar click **Setup**, then **Security**.

Figure 19. The security sub-menus



The following sub-menus are available:

- Change Password
- View User Rights
- Site Administration
- Group Administration
- User Administration
- Unit Type Setup
- Custom Caption Setup

Change Password

It is recommended that the default password be changed after installation is complete. By default, the password is 12345 when the software is first installed. As a security measure, store the password in the administrators secure files or in a limited access area.

Figure 20. The change password window



To change the Password, select **Setup / Security / Change Password** from the menu bar. The Change Password window will appear.

1. Click in the box labeled **New Password**.
2. Type in the new password.
3. Click in the box labeled **Confirm Password**.
4. Type in the new password again.
5. To complete the selection, click the OK button. If the new password was accepted the Password Accepted box will be displayed.
6. If the Cancel button is chosen, the password will not be changed.

View User Rights

To View User Rights, select **Setup / Security / View User Rights** from the menu bar. The Group's Rights window will be displayed. This window provides a quick overview of User and Group rights that have been setup in the **Group Administration** database. No editing functions may be performed in this window.

Figure 21. The groups rights window

Group Name	Access Level	Connection Type	Change Image Quality	Advanced Search	View WaveStudio	View User Rights	Record While Viewing	Save Clip From Unit	PTZ Functionality	Menu Setup	Site Description	IP/Phone No.	Unit Type	Camera QTY	Access Camera
Employees	Level1 (Lowest)	Normal	True	True	True	True	True	True	True	True	Hien Test Unit	10.90.253.05	DVMRe	16	1,2,3,4,5,6,7,8,9,10,11,12,13,14,15,16
											Rick's Tapex	10.90.253.120	DVMRe	16	1,2,3,4,5,6,7,8,9,10,11,12,13,14,15,16
Users	Level2	Live	True	True	True	True	True	True	True	True	Hieu/DSR61	10.90.253.61	DSR	16	1,2,3,4,5,6,7,8,9,10,11,12,13,14,15,16
											Rick's Tapex	10.90.253.120	DVMRe	16	1,2,3,4,5,6,7,8,9,10,11,12,13,14,15,16

Site Administration

Site Administration provides all the data required for the creation of the **Address Book**. To access Site Administration, select **Setup / Security / Site Administration** from the menu bar. The Sites Edit window will be displayed.

Figure 22. The sites administration window

Sites

Description: Hieu'sDSR61

Ethernet/POTS: Ethernet

IP/Phone Number: 10.90.253.61

Unit Password: _____

Serial Number: _____

Unit Type: DSR

Camera QTY: 16

Administrator of Unit: _____

Contact Phone Number: _____

Street: _____

City: _____

State/Province: _____

Zip/Postal Code: _____

Region/Country: _____

Notes 1: _____

Notes 2: _____

Notes 3: _____

Notes 4: _____

Add Edit Delete Search Close

Record 1

Previous Record Next Record

1st Record Last Record

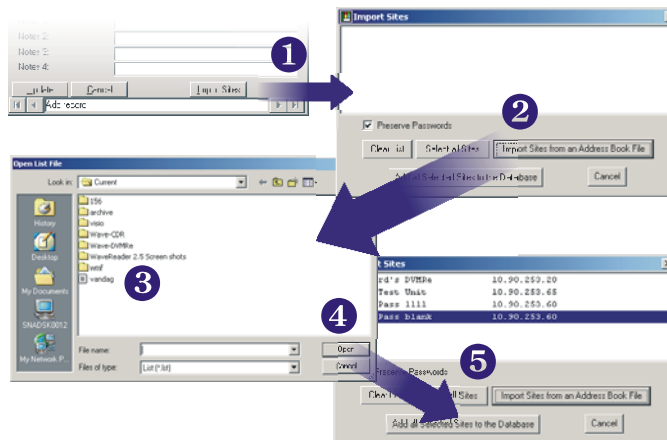
Creating the Site Address Book

This window allows the user to:

- **Add** new device/site information. Required fields are **Bolded**. Clicking on ADD also provides the option of importing an Address Book that has been saved as a lst file from a previous version of WaveReader
- **Edit** existing records.
- **Delete** existing records.
- **Search** through current records by the Site Description, IP/Phone Number, Street, City, State/Province, Zip/Postal Code, or Region/Country fields.

Importing an Address Book (from versions of WaveReader earlier than 2.5)

Figure 23. Importing an address book



Click on the **ADD** button in the Sites window. This modifies the button bar on the bottom of the window to include an **Import Sites** button. Follow the steps below to import the Address Book.

1. Click on the **Import Sites** Button. This brings up the Import Sites windows.
2. Click **Import Sites from Address Book File**. This brings up the Open List File window.
3. Navigate to the folder in which the **lst** file resides.

Note: **NOTE:** A lst file may be created using any text editor such as Notepad. See the section titled **Creating an Address File** on the following pages.

4. Select the lst file and click **Open**. This places the address list in the Import Sites window.
5. Click **Add all Selected Sites to the Database**.

Creating an Address File (for basic information)

The Address Book file may be created using any text edit such as Notepad. A sample address book may look like the following. Be sure to save or rename the file with the extension, **lst**. Once created the user can import the file using the previous procedure.

Figure 24. The address file

```

1000
3
0,"10.90.253.129","Alex's unit","12345"
0,"10.90.10.110","demo room","54321"
0,"10.90.253.28","Test unit",""
    
```

The first line (1000): Indicates a version number used by WaveReader to identify this list. Do not edit this number.

The second line (3): Indicates the number of addresses in the list. Change this number only if the number of address in the list changes.

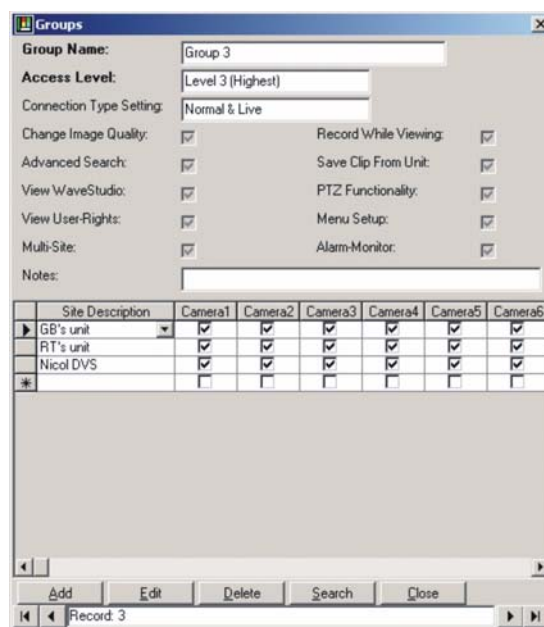
The address line indicates the following 4 items:

- This unit is connected via ethernet (indicated with a 0), or this unit is connected via a modem (indicated with a 1).
- The IP address or telephone number of the remote unit (example IP address show above "10.90.253.129")
- The name given to the remote unit (Example: "Alex's unit")
- The password for connecting to the remote unit (Example: "12345"). This field is not always populated.

Group Administration

Group Administration provides all the parameters required to set up various Group rights and access levels. To access Group Administration, select **Setup / Security / Group Administration** from the menu bar. The Groups Edit window will be displayed.

Figure 25. The groups window



This window allows the user to:

- **Add** new Groups, set their Access Level and Connection Type. Set their Group Rights and the Sites they have access to.
- **Edit** existing records. Clicking in the Edit button adds a **Show Users** and **Add All Sites** Button on the Button Bar. The Show Users button displays all users in the currently selected group. The Add All Sites button will add all available Sites to the selected group.
- **Delete** existing records.
- **Search** through current records by Group Name, Access Level and Connection Type fields.

Access Levels

The Access Levels are priority ratings used by the unit to determine if a currently established connection should terminate when a user with a higher priority level requests a connection.

If the current user has a lower access level, the unit will break its connection after sending a message to the users PC indicating that their connection has been terminated.

The status bar at the bottom of the WaveReader main window will also indicate that the **unit terminated the connection**.

There are three levels of access that can be set up in WaveReader:

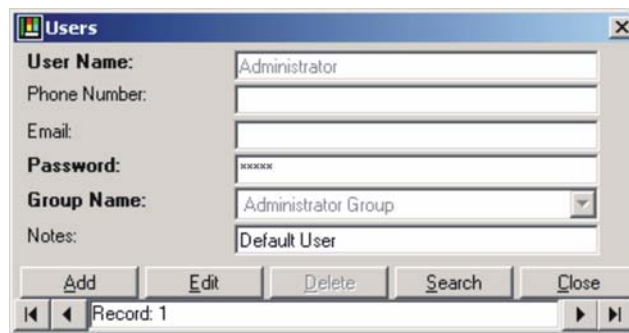
- **1** (lowest)
- **2**
- **3** (highest)

User Administration

User Administration provides all the data required for adding Users and user information into various Groups. The users will have the rights and access levels of the group to which they are assigned.

To access User Administration, select **Setup / Security / User Administration** from the menu bar. The Users Edit window will be displayed.

Figure 26. The user window



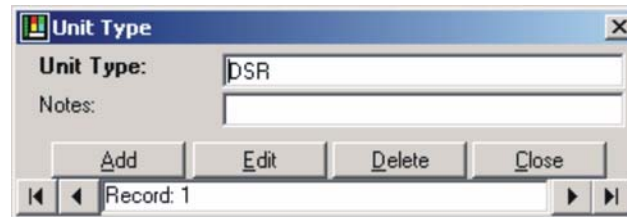
This window allows the user to:

- **Add** new users.
- **Edit** existing users.
- **Delete** existing users.
- **Search** through current records by User Name, Phone Number, Email Address, and Group Name.

Unit Type Setup

Unit Type Setup provides the data required for Unit Type field in the Site Administration window. To access Unit Type Setup, select **Setup / Security / Unit Type Setup** from the menu bar. The Unit Type Edit window will be displayed.

Figure 27. The unit type window



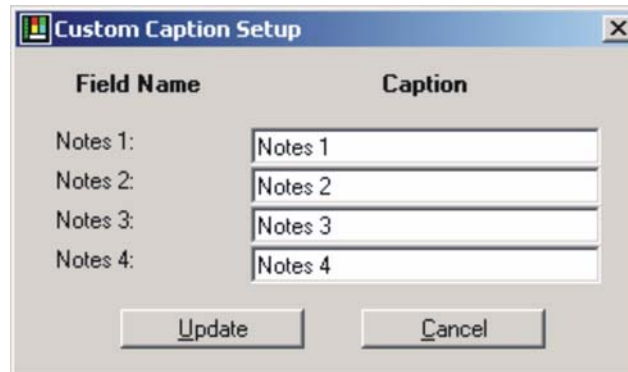
This window allows the user to:

- **Add** new devices.
- **Edit** existing devices.
- **Delete** existing devices.

Custom Caption Setup

The Custom Caption Setup menu allows the user to change the 4 provided Notes fields into user labelled fields. To access the Custom Caption Setup, select **Setup / Security / Custom Caption Setup** from the menu bar. The Custom Caption Setup Edit window will be displayed.

Figure 28. The custom caption setup window



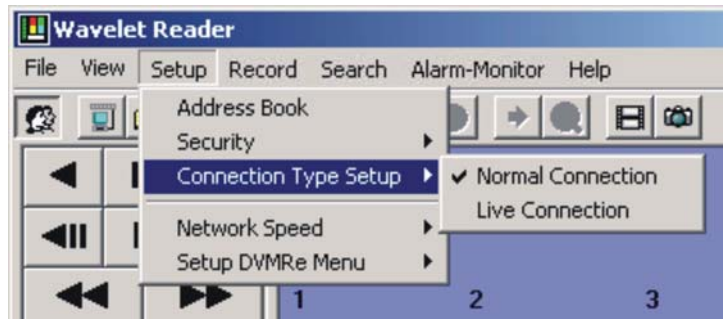
To relabel a field name simply highlight the current label, type in the new designation and click on the **Update** button.

Connection Type Setup

Two types of Ethernet connections can be established between the WaveReader software and a unit.

- Normal Connection
- Live Connection

Figure 29. The connection type setup sub-menus



Normal Connections

When a Normal Connection is made, the user may select between two operating modes:

- **View Playback Mode:** Allows the user to view and search recorded data from the units hard disk.
- **View Live Mode:** Allows the user to view live images. View Live Mode is the default mode.

View Live Mode

Live images from the connected unit will display along with the current Date, Time and Alarm status of the unit.

The following features are active in Live Mode:

- The Pause button functions as Stop button.
- The Pause, Disconnect, Multi-Camera, Camera Size, and Camera buttons are black and remain active. The remaining buttons turn gray and are inactive.
- The View Live command is replaced with the View Playback command.
- The current Date and Time appears.
- Multi-Camera live images can be viewed in 16-Way Large or Medium formats, or 4-way Large format.
- Single Camera live images can be viewed in Large, Medium, or Small formats.
- Clicking any camera image will display that camera image in full screen.
- A red letter "A" opposite the camera number means an alarm for that camera.

View Playback Mode

To enter View Playback Mode, select **Setup / View Playback** from the menu bar.

Figure 30. The view playback command



- Live images for each camera stop updating.
- The Disk Analysis Screen appears
- All buttons return to black.
- The View Playback command is replaced with the View Live command.
- WaveReader is still connected to the unit.

Return to Live Mode

When viewing live images is desired, the software may be switched back to the View Live mode via the Setup menu. This option is added to the Setup Menu only after a Normal Connection has been established. Along with the images being displayed, the current Date, Time and Alarm status of the unit are also shown.

To enter View Live Mode, select **Setup / View Live** from the menu bar.

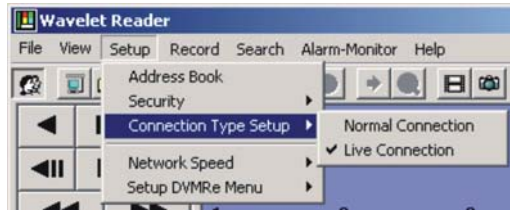
Figure 31. The view live command



Live Connections

When a Live Connection is made, the user is limited to viewing live images only. The user can establish a Live Connection even if a different user has established a Normal Connection. To establish a Live Connection, select **Setup / Connection Type Setup / Live Connection** from the menu bar.

Figure 32. The live connection command



No disk analysis screen is displayed.

Network Speed Setup

There are two Network Speeds that can be setup for connections between the WaveReader software and the unit.

- Fast speed (LAN)
- Slow speed (modem)

Figure 33. The network speed menu



Fast (LAN) Connections

Most Local Area Networks and Wide Area Networks have a large bandwidth of (typically 10 Megabit or 100 Megabit). When the default Fast (LAN) option is chosen, the WaveReader software will download large amounts of information from the unit such as the information required to display the Disk analysis window. This normally takes only a few seconds when bandwidth is not restricted.

Slow (modem) Connections

When the Slow (modem) option is selected, it is normally because the bandwidth is limited. This causes delays in getting information through the network. Unless the user's Network Administrator has intentionally restricted the amount of available bandwidth, this type of limitation may be due to network connections established through modem connections or ISDN connections. In this situation it is not always advisable to burden the network with so much data.

When the Slow (modem) option is chosen the WaveReader does not request the large amount of data needed to display the Disk Analysis window. Playback starts at the beginning of the recorded data and proceeds to the end.

In order to compensate for the missing Disk Analysis window, additional search capabilities have been incorporated within the WaveReader software. These will be covered in Section 6.

Image Quality Setup

Once a connection has been established between the PC and a unit, the Image Quality Setup option becomes available.

Clicking the right mouse button on this option causes the Image Quality Setup window to open.

This window allows the user to select the quality level for each type of display available in the WaveReader software.

Figure 34. The image quality menu



Quality levels are adjustable from Low to High. This setting instructs the unit on how much video content data is required to display an image with the selected quality level.

Lower quality levels are more suitable for images displayed in smaller formats because the loss of fine detail in the image is not as noticeable. Higher quality levels are required for images displayed in larger formats.

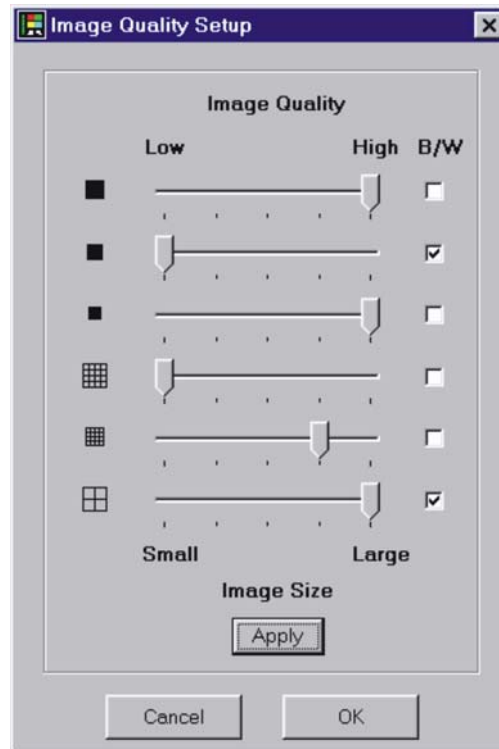
The user also has the option of having the image sent as a monochrome (B/W) picture.

The update rate in pictures per second is improved by lowering the quality level or by switching to monochrome since both require less actual data to be transmitted. When both settings are combined, an even greater update rate can be achieved.

This is especially useful when limited bandwidth is available or restrictions on bandwidth use are implemented (as in a POTS connection).

The Image Quality Setup Window

Figure 35. The image quality setup window



Use the slider bars to adjust the quality settings for each of the display formats.

Place a check mark in the B/W box for each format if pictures should be sent as monochrome images.

Click the **Apply** button to temporarily apply the settings to the currently displayed screen.

When the settings are correct, click the **OK** button to save the changes or click the **Cancel** button to discard the changes and return the settings to their previous levels.

Clicking on either the **Cancel** or **OK** buttons will clear this window and return the WaveReader software to normal operations.

Setup DVMRe Menu

Configuring The DVMRe Menu System Remotely

WaveReader allows the user to access and make changes to the main menu system of a remote multiplexer. To access the menu system remotely, the user must establish a Normal Connection via the ethernet. The menu features cannot be accessed from a Live connection. For detailed information about configuring the menu system, see the user manual for information specific to the multiplexer you are trying to configure.

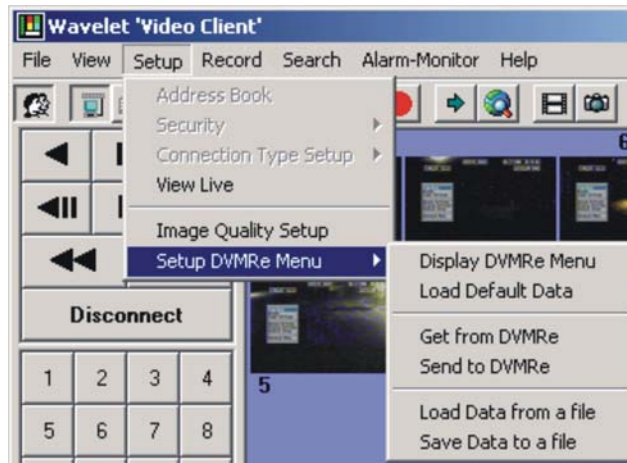
Note: The following menu items cannot be changed remotely if using a POTS connection.

- Factory Language
- Keyboard Lock
- Output Relays
- Full screen Alarm
- Baud Rates
- Auto Camera Disable
- Alarm Record Mode
- Record Lock

Setup DVMRe Menu

From the Menu bar, select **Setup / Setup DVMRe Menu**.

Figure 36. The setup DVMRe menu



Select from the following options:

- Display DVMRe Menu
- Load Default Data
- Get from DVMRe
- Send to DVMRe
- Load Data from a File
- Save Data to a File

Display DVMRe Menu

- From the Menu bar, select **Setup / Setup DVMRe Menu / Display DVMRe Menu**.
- Select the number of cameras for the multiplexer you are configuring.

Load Default Data

- From the Menu bar, select **Setup / Setup DVMRe Menu / Load Default Data**.
- Select the number of cameras for the multiplexer you are configuring.

Get from DVMRe

Use this feature to download current menu settings from the selected unit, modify them, then return them (Upload them) to the unit.

- From the Menu bar, select **Setup / Setup DVMRe Menu / Get From DVMRe**.

Send to DVMRe

This allows the user to configure the menu system of a remote unit by uploading a file containing the menu settings.

- From the Menu bar, select **Setup / Setup DVMRe Menu / Send to DVMRe**.

Load Data From A File

Load multiplexer menu configuration data, so that it may be uploaded to the unit.

- From the Menu bar, select **Setup / Setup DVMRe Menu / Load Data From A File**.

Save Data To A File

This allows the user to save the menu settings of the selected DVMRe, so that they may be used as backup, or copied onto another unit.

- From the Menu bar, select **Setup / Setup DVMRe Menu / Save Data To A File**.

The Record Menu

WaveReader allows the user to record directly to the hard disk via the ethernet connection.

Figure 37. The record menu commands



To begin Recording:

1. Select **Record / Record Setup** from the Menu bar. A standard Save As menu called **Filename for Recording Image Sequence** will appear.

2. Click on the **Save as type** drop down menu to select the file type. Choose between a 60d or rdb (or 20d if connected to a StoreSafe Pro II) file type. Type the desired file name in the File Name box. Click the **Save** button.
3. Select **Record / Start Recording** from the Menu bar to begin recording the images displayed in the Main window.
4. Select **Record / Stop Recording** from the Menu bar to stop recording.

Note: Only images actually being displayed will be recorded. Recordings will be made using the quality levels set for the images displayed.

Playing Back From a 20d, 60d or rdb File

To playback the recorded data described in the previous section:

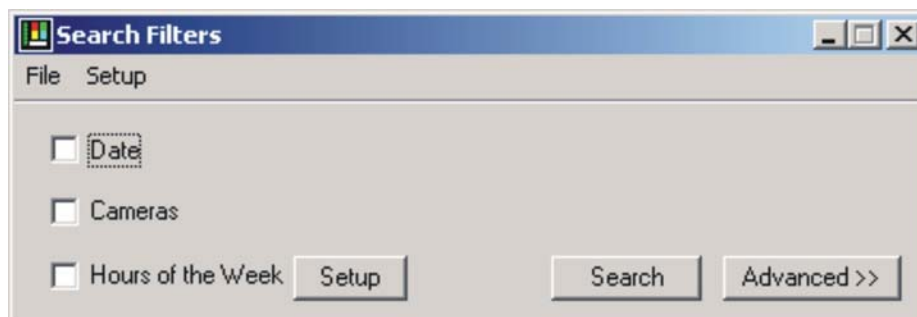
- Disconnect from the unit if currently connected.
- Select **File / Open** from the Menu bar. A window called Open Wavelet Data Files will appear.
- Select a 20d, 60d or rdb from the **Files of Type** box.
- Select file location from Look in box or type file name in File Name box.
- Click on the **Open** button.
- Playback file by clicking the **Play** button.

The Search Menu

Once a Normal Connection has been established between the PC and a unit, the Search Menu option will appear in the Menu Bar and the Search Icon will become available in the Icon Bar. Searches are only possible on files or when connected to DVMR and StoreSafe units with software version 5.02 or later.

Launch the Search screen by clicking on the Search icon  or the Search menu option. The **Search Screen** has two modes basic and advanced. The Search screen is in basic mode when it first appears as shown below.

Figure 38. The search filters menu in basic mode

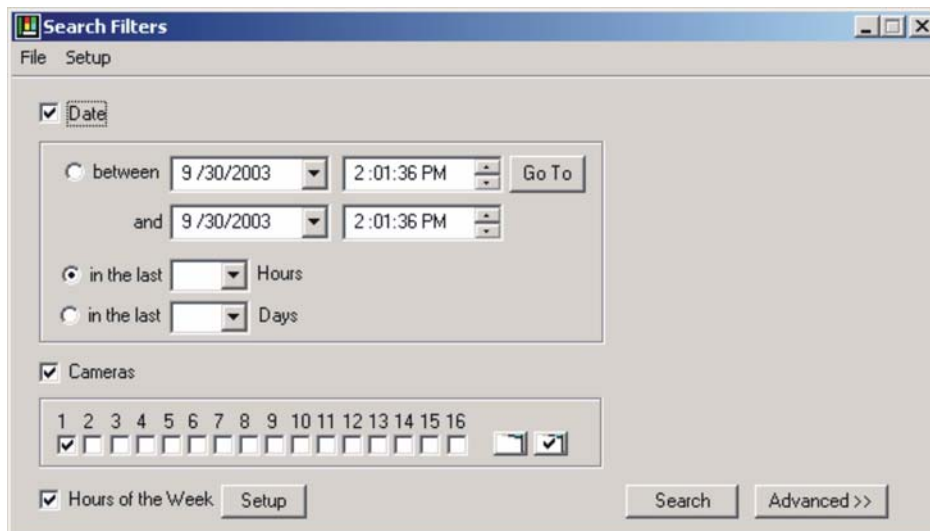


Note: If no alarm, event or text filters are selected and a search is launched the search results will only display the start and stop boundaries of the recorded video.

Basic Mode

In basic mode, the user can set up the **Date**, **Cameras**, and **Hours of the Week** filters. The **Hours of the Week** filter is only available if searching on files or if connected to DVMRe Triplex units with software version 5.02 or higher. Selecting any of these parameters modifies the Search Filters screen and displays that selection's options. The screen below shows the Search Screen with all three Filters selected.

Figure 39. The basic search filters window with filters selected



The Search Filters Menu bar contains the **File** and **Setup** menus.

The **File** menu contains the **Load Search Filters** menu and the **Save Search Filters** menu. Search filter combinations may be saved and loaded through these menus for use on different devices. Filter parameters in the saved file that are not applicable on a particular device are ignored during the Search. Search filter parameters are saved in xml format in the QuickWave directory.

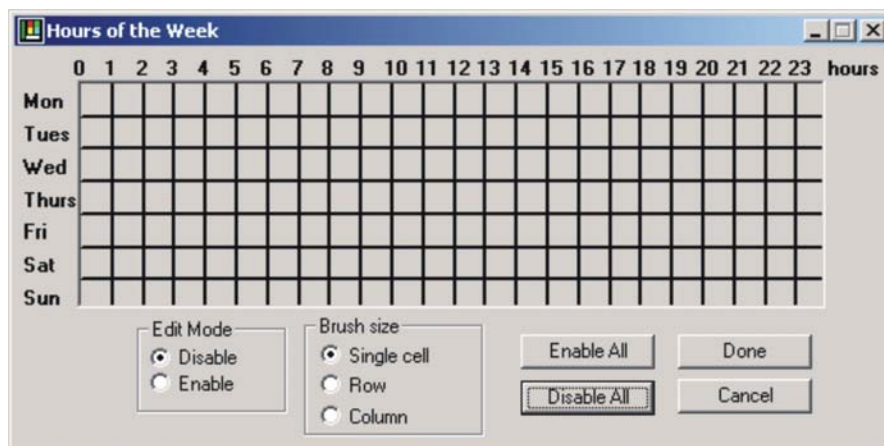
The **Setup** menu contains the **Mode** menu and the Search **Schedule** menu. See [Scheduled Search](#) on page 41 for a detailed explanation of this feature.

The **Mode** menu is used to select the way the search is reported, **Batch** or the default **Interactive**. The batch mode does not have any result quantity limitation and all results are written to a file. The file format choices are txt, html, or xml.

The **Go To** button in the **Date** filter section begins transmitting recorded video from the closest point to the time and date selected.

The **Hours of the Week** filters option is used to apply another level of date/time filtering when doing the search. For example, the user can specify that he only wants to search on Mon, Wed and Fri between 8am-5pm. Clicking on the **Setup** button will display the **Hours of the Week** selection window as shown below.

Figure 40. The hours of the week window

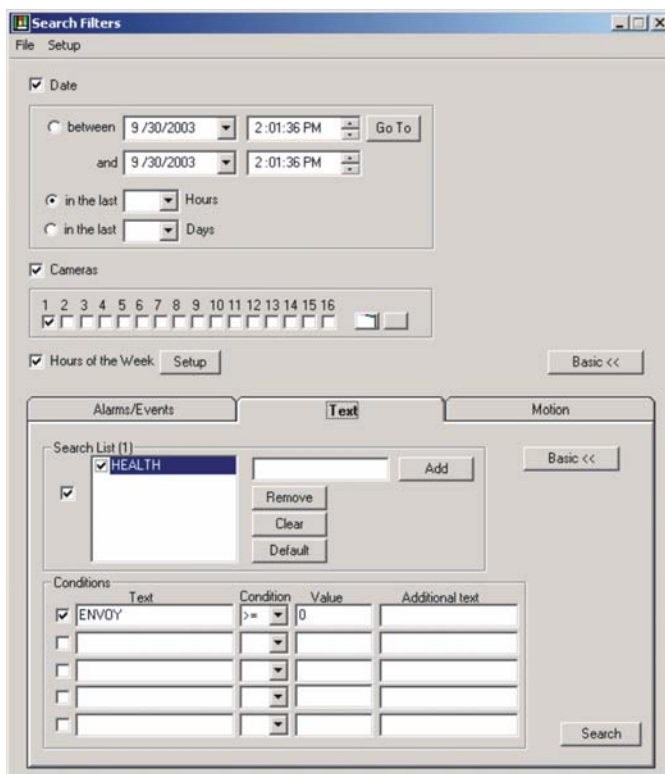


To use this window click **Enable** in the **Edit Mode** box make your selections and click on **Done**.

The **Search** button will execute the search based upon the filter selections and launch the **Search Results** window as long as the **Search Setup** mode is **Interactive**. See [Search Results](#) on page 42 section for more details.

Clicking on the **Advanced** button will expand the Search Filters screen to include filters such as Alarm/Event, Text, and Motion. The screen shown below is shown with the Text tab selected.

Figure 41. The search filters in advanced mode



Advanced Mode

In the advanced mode, the user can specify alarm/event, text, motion filters in addition to camera, date and week. If the user is not logged in or doesn't have rights to do an advanced search, the user cannot switch to advanced mode. The advanced button will be grayed out.

The **Alarm/Event** tab executes searches based upon Alarm or Event flags.

The **Text** tab has basic and advanced modes of operation. The basic mode allows the user to type in text and search for it. The advanced mode allows users to search on strings or conditions. Advanced text mode searches are only available if searching on files or if connected to DVMRe Triplex units with software version 5.02 or later.

In addition to the search strings, up to 5 search conditions can be defined. Search Conditions allow the operator to do **Greater than/Less than/Equal to** type of searches based on numeric values that are contained in text strings. For example a search condition could be set up to find all lines where the string **Total** is found with a value greater than \$100.

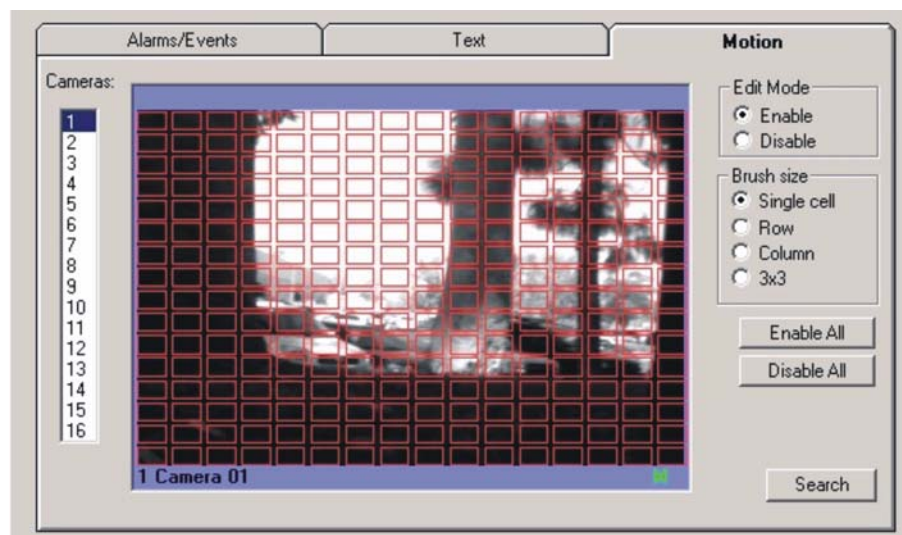
Every condition filter has 4 entries:

- **Text** – text to search for – Can be typed manually or can be entered automatically by selecting words from the Search list and then dragging it with the mouse and dropping it into the Text box.
- **Condition** - >=, <=, =
- **Value** – Numerical value
- **Additional Text** – other text that must appear in the line along with the String and Numerical value
- **A text condition** “*” can be used as a wildcard that matches all strings and basically just evaluates the numeric portion of a line of text.

Any combination of the **25 Search list strings** and the **5 Conditional filters** can be used together when doing a search.

The **Motion** tab bases searches by camera and screen area. The screenshot below shows only the motion tab area of the advanced search screen. Enabled grid sections are displayed in yellow, disabled sections in red.

Figure 42. Motion search window



Scheduled Search

The **Schedule(d)** Search menu allows the user to run a search on a single unit or a multi-site group at a specified time and on certain days and save the results to a file. The scheduled search runs in the background.



This icon displays on the main WaveReader screen and indicates that a scheduled search is running. To stop the scheduled search double-click this icon. The user must be logged in for the scheduled search to run. If the logged-in user does not have the rights to see the sites specified in the schedule the search will be abandoned.

The user must setup the scheduler in order to run a scheduled search. To do this select **Setup/Schedule** from the Search screen. The following setup screen displays.

Figure 43. The search schedule screen

1. Select the **Time**.
2. Select the **Recurrence Pattern**.
3. Select the **Range of Recurrence**.
4. Select the **Search Filters File**. This is a file containing the parameters required to do the search. **This file must have been previously saved using the File/Save Search Filters menu on the Search Filters screen.** Motion search is the only kind of search that is currently not supported when scheduling a search.

5. Name the **Search Output File**. This is the file that will contain the results of the search. This can be saved as a html or xml file. The filename specified by the user cannot have an underscore in it. When the scheduler runs, it checks if a file with the output filename specified already exists. If it does exist, the scheduler creates a new output file using the user specified file name suffixed with an **_x**, where x runs from 1 to 365 (eg. searchout_1.xml, searchout_2.xml.... etc). When the max count (365) is reached, the file will start getting overwritten.

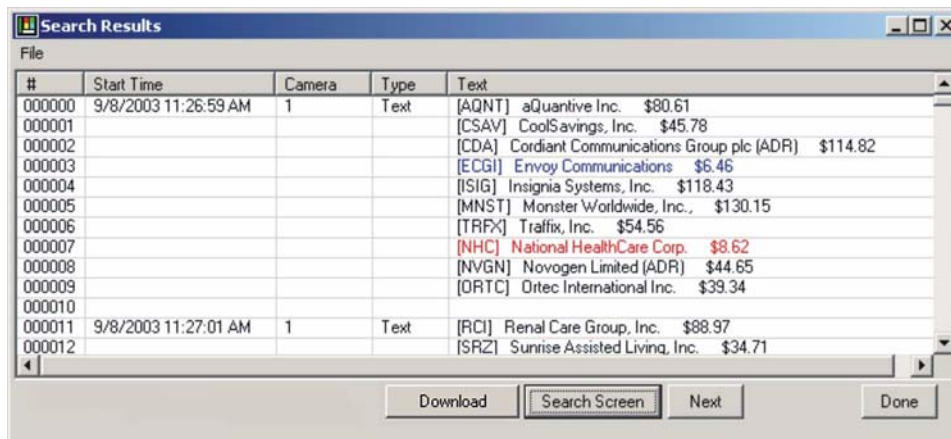
Note: Note: We recommend that the user save the search filter files and output files in separate folders.

6. Select the **Site/IP List**. The Site/IP List specifies the unit/group against which the scheduled search will run. Select this using the **Address Book** button.
7. Click on the **Save** button to save all the parameters. These parameters will be saved in a file called **SearchSchedule.XML** in the WaveReader/Scheduler folder. When a user logs in, the scheduler will use this file to schedule the search. The scheduler will not run if the start date specified is more than two weeks from the current date.
8. Click on the **X** (close window icon) in the upper right hand corner of the window to exit.

Search Results

The results of any search are displayed in the **Search Results** window. The search is automatically cancelled after the first 1000 lines of results are received. If more results are available, the **Next** button will be enabled and the user can use this to see the next set of 1000 results (for an advanced text search) or 10 results (for a basic text, alarm/event, motion search).

Figure 44. The search results screen

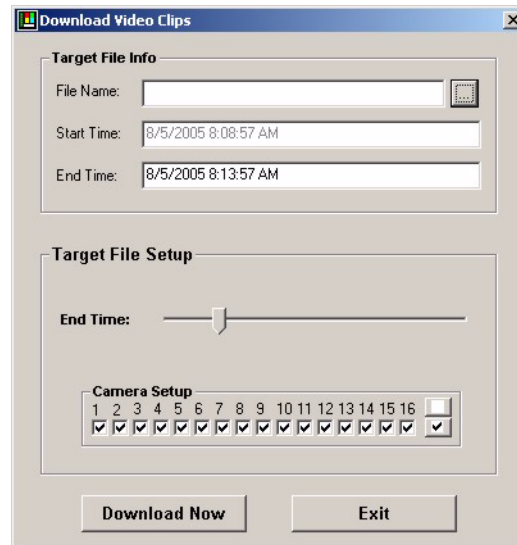


When doing an advanced text search, the search results window will show lines that had a string match in red and lines that had a condition match in blue.

To download any of the search results to a 20d video file do the following:

1. Click in the row of the desired file or shift-click in multiple rows for multiple selections.
2. Click on the **Download** button. This will launch the **Download Video Clips** window.

Figure 45. The download video clips window



3. Click the browse file icon to select a location to store your video clip. This will launch the *Save New File* requestor box.
4. Browse to the location where you wish to save the video clip, type in a file name, and click on the *Save* button.
5. You can adjust the file end time by moving the *End Time* slider.
6. You can also select or deselect various cameras in the *Camera Setup* field.
7. When satisfied, click on the *Download Now* button.

Note: Please note that audio is not recorded with these files. To record audio save files using the *Disk Analysis* screen (see [The Disk Analysis Screen](#) on page 17).

The search can be cancelled at any time by clicking the **Cancel** button on the progress bar. If a search is active, user cannot start a new search.

The search results can be saved to a file by using the **Save** or **Save Selected** options under the **File** menu. The user can choose the file type (txt, xml or html) and specify the directory where the file should be saved.

Search results can also be printed using the **Print** option under the **File** menu.

WaveReader cannot play when doing a search. Clicking on an item in the search results window will cause the respective image to be displayed in the WaveReader window.

Multi-Site Mode

The Multi-Site Mode menu options can be accessed through the main menu bar. To access the Multi-Site Mode commands, select **Multi-Site** from the menu bar. Multi-Site mode is a new feature of WaveReader that allows the operator to view cameras from multiple Triplex units simultaneously on custom definable screens.

Note: Multi-site mode is only available on the DVMRe and DVMRe Triplex units. Also DVMRe and DVMRe Triplex units must not have their *Unit Types* modified from their default types in the *Unit Type Setup* menu.

Multi-Site mode supports simultaneous connections to up to 16 Triplex units. This gives the user access to up to 256 different cameras. These cameras can be arranged and displayed in any combination on custom definable screens up to a maximum 64 cameras at a time. The user can define up to 25 different Custom Screens that can consist of any mixture of 4, 16, 36 and 64 way screens.

Every Custom Screen can be given a unique name that describes the units whose cameras are grouped within it. These screens are ideally suited to group cameras from Triplex units that are located in the same geographic area. For example, if a school has two Triplex units in their security layout, all 32 cameras can be displayed simultaneously in one 36 way Custom Screen.

Start Multi-Site Mode

To enter Multi-Site mode, simply click on the **Start** menu item. The two modes that can be chosen from are **Live** and **Play**.

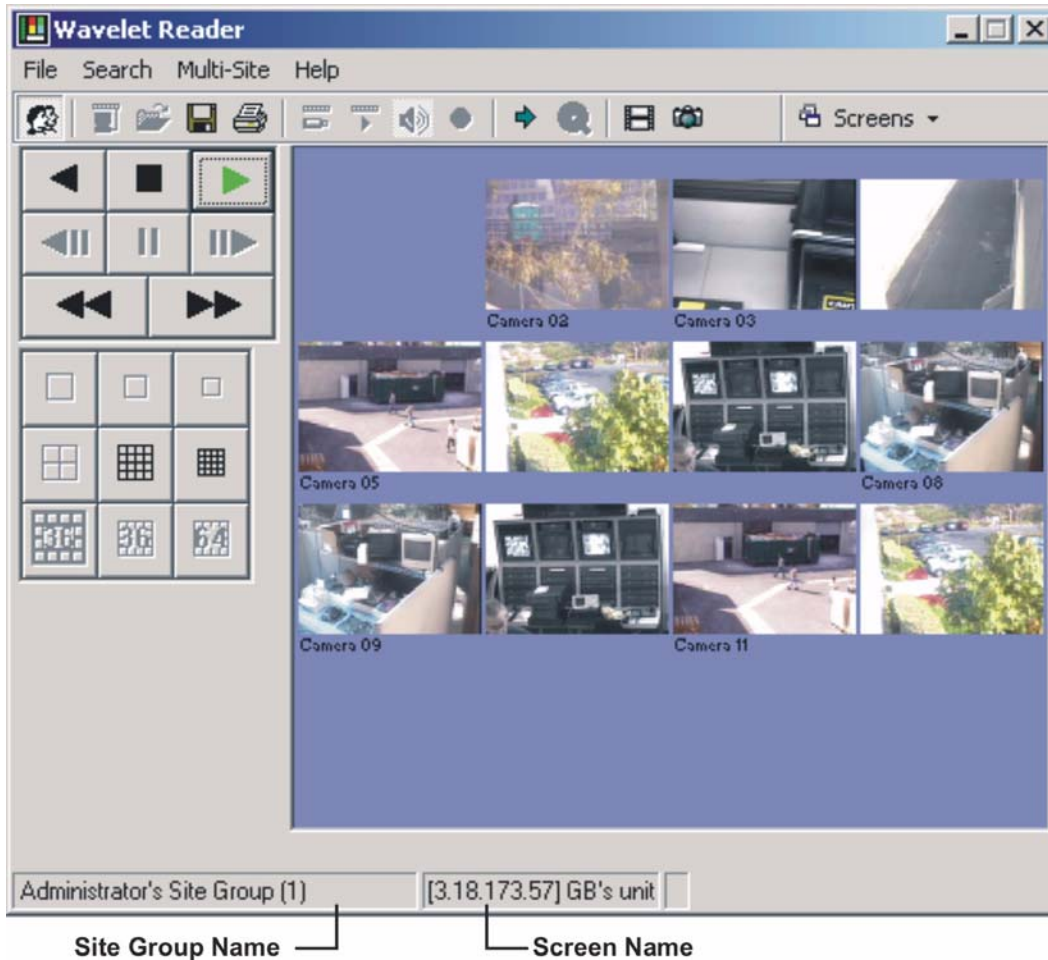
Figure 46. Multi-site menu



- **Live:** In Live mode, all connections that are made to Triplex units will be live-only connections. This is the preferred way of connecting when many users are connecting to the same triplex units and everyone wants to view live images.
- **Play:** In Play mode, all connections that are made to Triplex units will be Normal connections. This mode allows the operator to review recorded data from several Triplex units simultaneously by doing a search to a specific time and date.

After Live or Play mode is selected, WaveReader will enter into Multi-Site Mode.

Figure 47. WaveReader in multi-site mode



Stop Multi-Site Mode

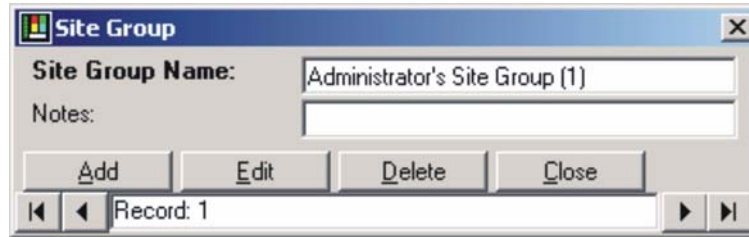
To return to normal WaveReader mode, simply click on the **Stop** menu item in the **Multi-Site** menu.

Create a Site Group

A Site group is any combination of sites (up to 16), chosen from the user's address book, from which cameras can be chosen to create Custom screens. The user can create any number of Site Groups and the same site may belong to any number of these Groups.

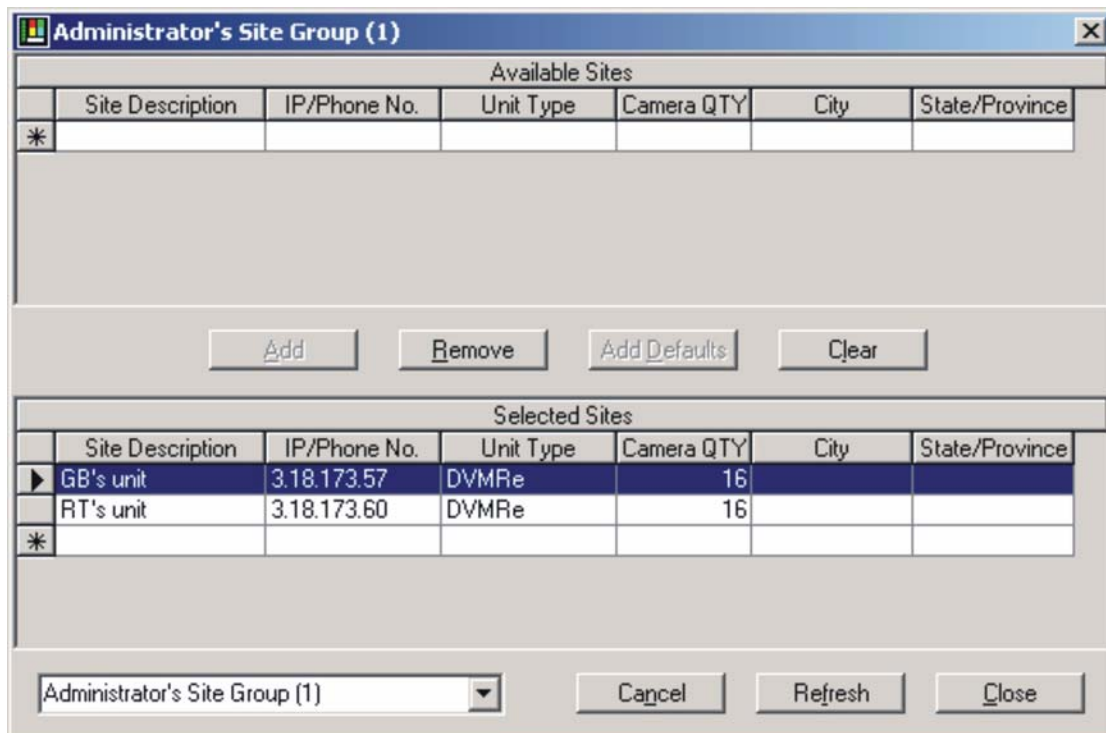
To add a new Site Group, delete a group or to change the name of an existing group, select the **Add/Delete Site Group** menu.

Figure 48. The site group window



To add new sites to a Site Group, change the sites that belong to a Site group or simply view the sites in a Site group, select the **Site Group Setup** menu. At the top of the setup screen, all sites in the address book are listed. At the bottom of the screen the sites that have been added to the Site list are displayed. To add a site to the list, select the site in the top window and click the **Add** button. To remove a site from the list, select the site in the bottom window and click the Remove button.

Figure 49. The administrators site group window



Sites can easily be set up for all existing Site groups by simply selecting the Site Group name from the Drop-down box in the bottom left corner of the Site Group setup screen. The name of the selected Site Group will appear in the title of the screen.

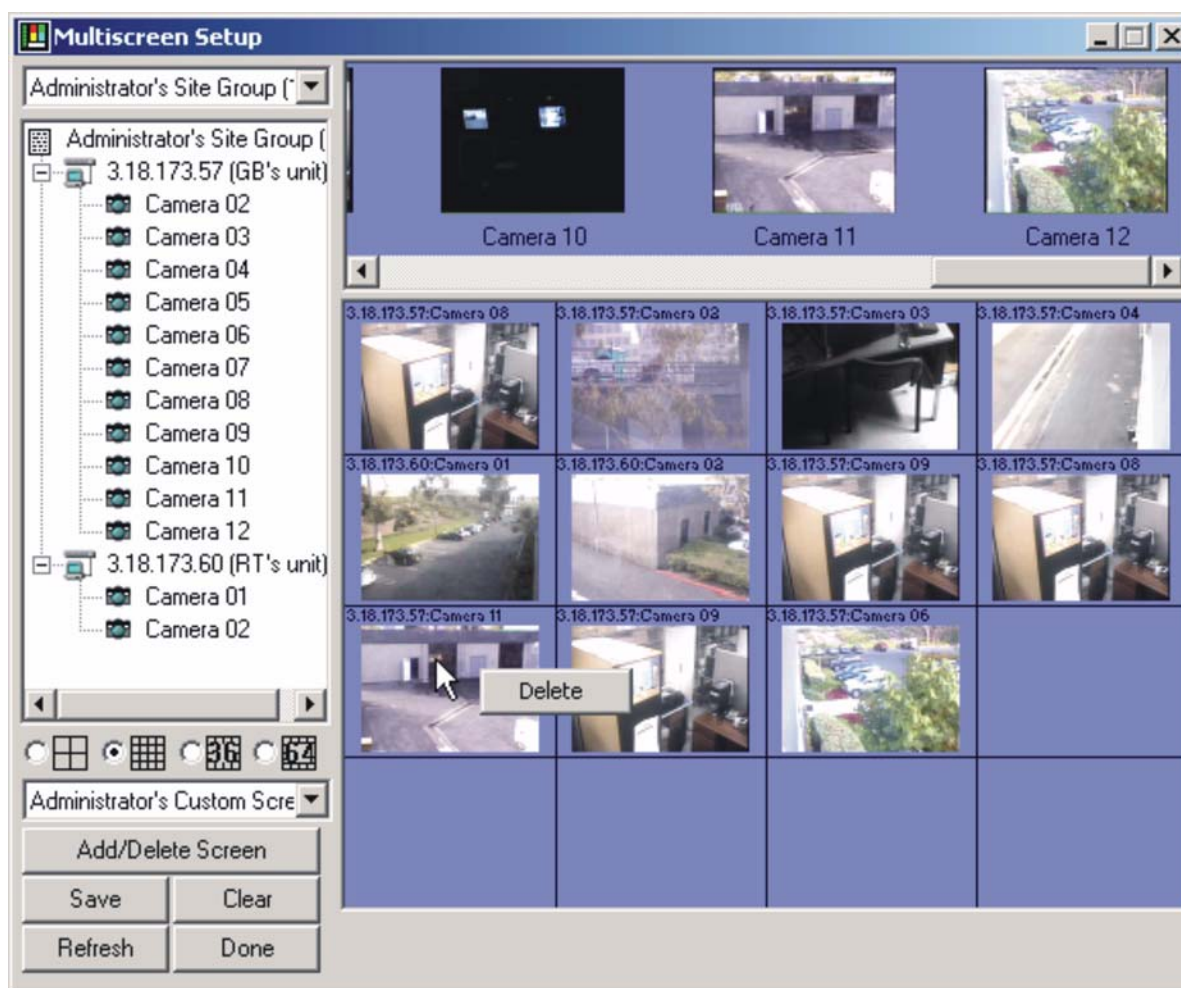
The site lists will be saved when the **Close** button is clicked or when the user switches to a new Site Group.

How to add a new (or edit an existing) Custom Screen

To create or edit a Custom screen, select the **Screen Setup** menu. While in this setup mode, connections to all the sites in the group will be established and snapshots of all the available cameras will be downloaded. The Site group for which the custom screens are defined can be selected in the drop-down box on the left top of the screen.

A new screen can be added by clicking the **Add/Delete Screen** button. The screen must be given a unique name and must be either a 4, 16, 36 or 64 way.

Figure 50. Multiscreen setup screen



Once a new custom screen has been added, it can be selected by clicking in one of the 4 icons on the left of the setup screen. If you want to edit a new 36-way screen, click on the 36-way icon and select the screen name from the drop-down list. A 36-way grid will appear that can be modified as described below.

On the left top of the setup screen a list of all the sites will be displayed. By clicking on a specific Site in the list, snapshots from all of its cameras will be displayed at the top of the screen.

The area containing the grid is where the screen layout is designed. The operator can place any camera from any unit, anywhere on the grid. Cameras can be added to the grid in any of the following 3 ways:

- Click on an image at the top of the setup screen and drag it (while keeping the left mouse button down) to the desired block in the grid and then **drop** it by releasing the mouse button.
- Click on the + symbol next to the site in the preferred list to expand it into a list of Camera titles. Click and drag the Camera Title to the desired grid position.
- Click on the site name in the preferred list, hold the mouse down and drag it to a cell in the grid. While dragging, the mouse cursor will turn into a **Hand holding a Page** picture. When the mouse button is released, all available cameras for that site will be added to the grid (starting at the cell where the mouse was released and filling up the cells in the row towards the right) wrapping around to the next row if needed.

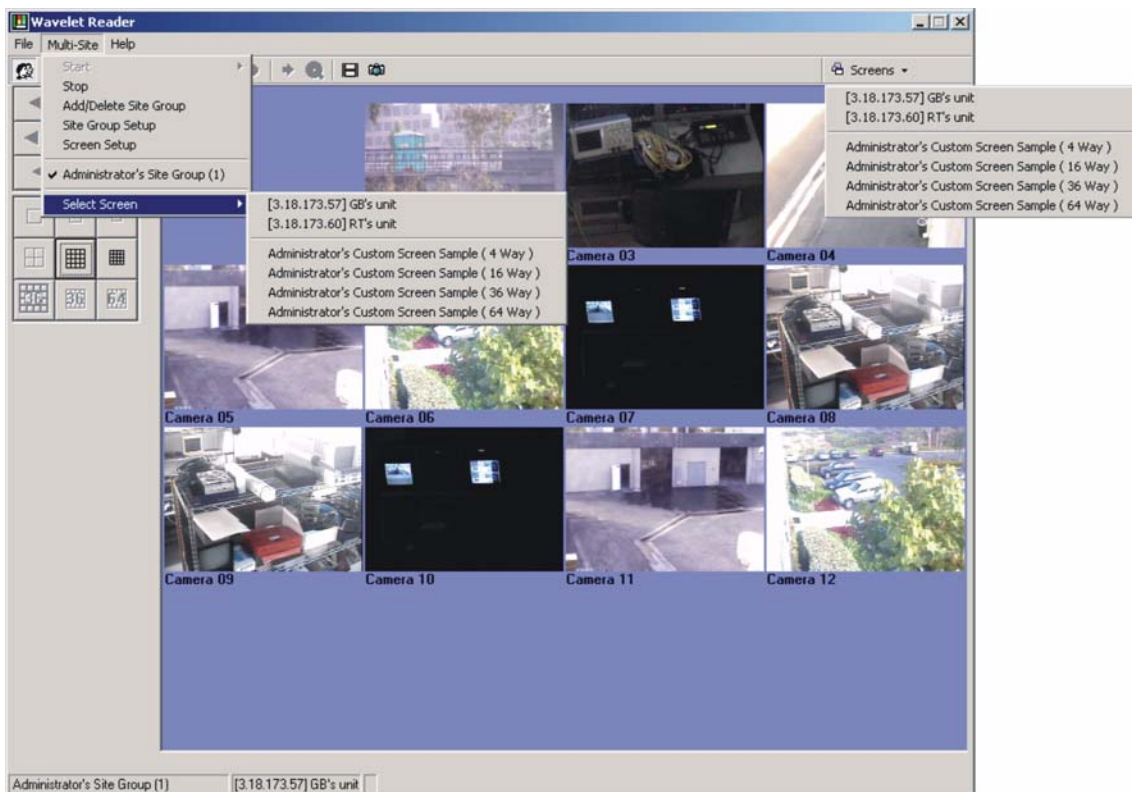
Right clicking the mouse and selecting **Delete** can clear cells in the grid. Clicking the clear button to the left of the grid will clear the whole screen.

Images already dropped on the grid can be moved around by clicking and dragging them around on the grid. By holding in the Control key before clicking and dragging, a copy of an image can be created and moved to a new cell in the grid.

How to change to a new Custom Screen

To change to a new Custom screen, choose the screen name from the **Select Screen** menu. Another way of selecting a screen is to select it from the **Screens** button on the right hand side of the toolbar.

Figure 51. Changing custom screens



In both cases, the screen list consists of some Default screens followed by the user's custom defined screens.

- **Default 16 Way Screens:** The screens at the top of the list are all 16 Way screens and are automatically created – one for every Site in the site list. It shows all 16 cameras connected to a Triplex. This is equivalent to the old WaveReader 16 way screen.
- **Custom Screens:** The screens at the bottom of the list are the screens that are created by the operator. They can be 4, 16, 36 or 64 way screens. These screens can contain cameras from 1 to 16 Triplex units.

Multi-Site Search

WaveReader supports searches across multiple or Multi-Site units. To execute a Multi-Site Search:

1. Select **Multi-Site/Start/Play** from the **Main Menu**.
2. Select the Multi-Site on which the search is to be performed from the **Screens** drop-down menu.



Click the search icon .

The **Search Screen** will appear, select the search parameters as you would for a single unit and click the **Search** button. WaveReader will send a search request with the selected parameters to all the units in the current group and display the results in a new screen.

Figure 52. Multi-site search results screen

#	Start Time	End Time	Camera	Type	Text
000000	2/12/2004 6:52:48 PM	2/13/2004 8:09:08 AM	2,3,4,5,6...	Event	
000001	2/13/2004 8:10:52 AM	2/17/2004 9:41:17 AM	2,3,4,5,6...	Event	
000002	2/17/2004 9:41:19 AM	2/17/2004 9:41:58 AM	2,3,8	Event	
000003	2/17/2004 9:42:00 AM	2/17/2004 9:42:10 AM	2,8	Event	
000004	2/17/2004 9:42:12 AM	2/17/2004 9:46:46 AM	2,3,5,6,8	Event	
000005	2/17/2004 9:46:48 AM	2/27/2004 9:20:07 AM	2,3,4,5,6...	Event	

The **Search Results** screen will list the IP addresses of all the units in the current group in a tree view on the left portion of the screen. The search progress will be indicated as a percentage value in brackets next to the IP address. When the search has completed, the percentage will indicate 100 and the color of the IP address text will turn green. By default the search will pause after receiving about 100 results (or 30,000 bytes) and the color of the IP address text will turn red. The **Next All** button can be used to continue the search on all units that are paused. The **Stop All** button can be used at any time to stop the search. To see the search results from a particular unit, click its IP address. The corresponding results will be displayed in a list view on the right and the result count **NO OF RESULTS** will be displayed at the bottom.

Click on a record to view that particular video.

The Alarm Monitoring Menu

The Alarm Monitoring menu options can be accessed through the main menu bar. To access the Alarm Monitoring commands, select **Alarm-Monitoring** from the menu bar.

Note: Alarm monitoring is not available on any StoreSafe model.

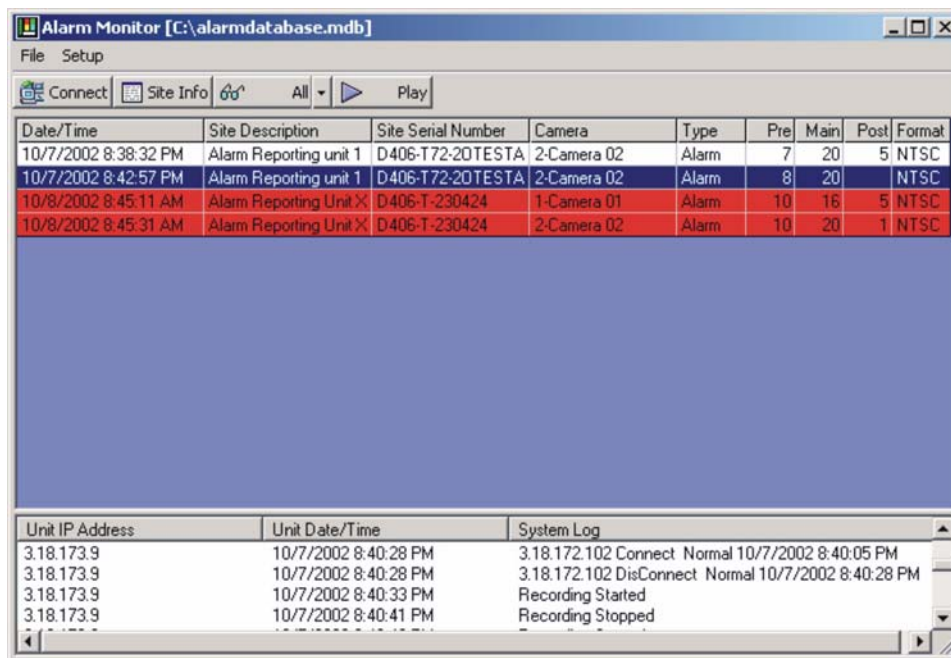
The following commands are available:

- Start the Alarm Monitor
- Stop the Alarm Monitor

Start the Alarm Monitor

This command launches the **Alarm Monitor** Screen.

Figure 53. The alarm monitoring screen



The Alarm Monitor screen lists all the conditions that have been reported to WaveReader. The screen consists of two tables.

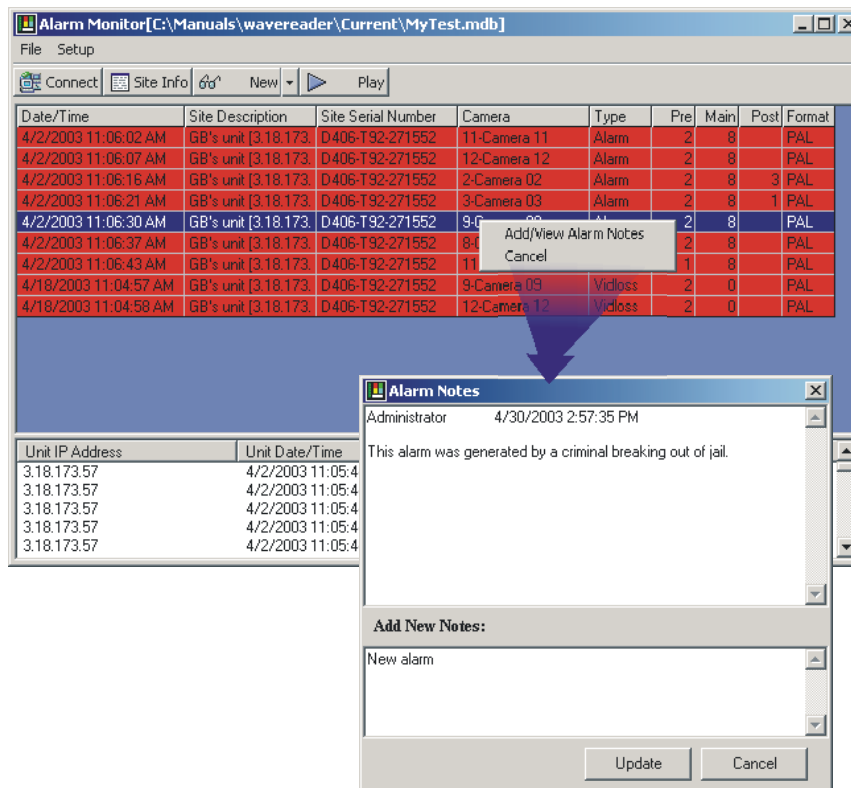
The topmost table displays data in a list format. Every row in the table represents a specific camera on a specific Triplex from which alarm images have been uploaded. Sometimes it can happen that a Triplex reports alarms on more than one camera. In this case more than one row will be added to the table.

Every row in the table consists of the following fields:

- **Date/Time** – Specifies exactly when the alarm happened in the calling unit's time.
- **Site Description** – IP address of the unit that reported the alarm
- **Site Serial Number** – the Serial number of the unit that called
- **Camera** – The camera number associated with the alarm
- **Type** – The type of alarm
- **Pre** – Number of Pre-Alarm images that were uploaded
- **Main** - Number of Main-Alarm images that were uploaded
- **Post** - Number of Post-Alarm images that were uploaded
- **Format** – Video Format (NTSC or PAL)

Right-click on a row to launch a notes window that can be used to enter pertinent information about that specific alarm. Multiple users may add different messages to the same alarm. Each time a message is added the username and the time and date will be logged and appended to the notes field.

Figure 54. The alarm notes pop-up window



The function of the **Connect** button is to allow the user to connect back to the unit that generated the alarm. The play pointer on the unit's hard disk will be automatically placed at the position where the alarm occurred. This allows the user to do more detailed investigation by looking at what was recorded before the alarm happened.

Images from a specific camera or cameras can be played back by selecting the corresponding row or rows using the mouse and then pressing the **Play** button. When only a Pre, Main or Post section is selected, only those images will be played back. The **Single step** buttons may also be used while analyzing the data.

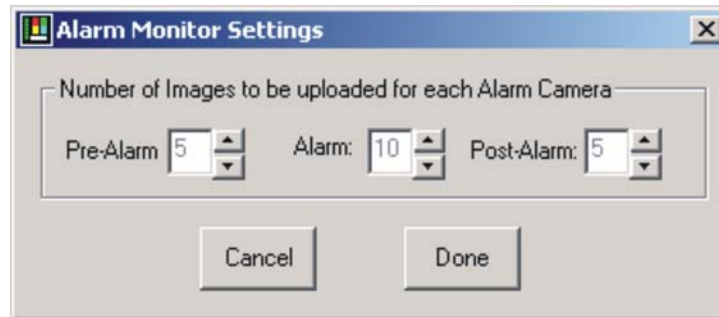
Status Information about the Triplex unit that called can be viewed by clicking on the **Site Info** button.

When data from a camera has been reviewed, it can be deleted from the database by pressing the delete key on the keyboard or it can simply be marked as reviewed by clicking the **Unmark as New** button menu.

New alarms will be shown in red and those that have been **Unmarked** will be displayed in white. The user can either view all the rows in the database by clicking the **All** button or he can only show the new alarms by clicking on the **New** button.

The **Setup** menu on the Alarm Monitor Screen allows the user to specify the maximum number of images to upload for the Pre, Main and Post alarms.

Figure 55. Alarm monitor settings



The table on the bottom of the Alarm Monitor screen logs all reported items that do not have associated images. The items that will be logged include:

- **Video Loss** – Any change in the video loss status
- **Recording** – Starting and Stopping Recording
- **Archive device** – State changes (e.g. tape full)
- **Menu access** – Entered menus – exited menus
- **Power up** - The Triplex reports its power-up time
- **Unit Connections** – The IP Address of every PC that connects to or disconnects from the Triplex is reported.

The System Log shows the IP address of the calling unit, the timestamp when it was reported and a description of the item.

The information in the bottom table can be copied to the Windows Clipboard by using the **Copy System Log menu** or it can be deleted by right clicking on the table.

Stop the Alarm Monitor

This command halts Alarm Monitoring.

The Help Menu

The Help menu options can be accessed through the main menu bar. To access the Help command, select **Help** from the menu bar.

Figure 56. The help menu



This menu allows the user to:

- Access Help Topics.
- Obtain Mux Information.
- Obtain Software version and System Info.

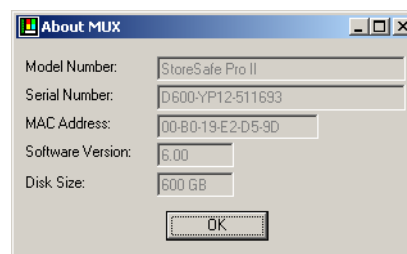
Help Topics

The Help Topics are available in this menu and for context sensitive help on some options, depress the F1 key while the mouse is hovering over a feature.

About Mux

The About Mux command provides information about the connected Mux.

Figure 57. The about mux window



The following information is viewable:

- Model Number.
- Serial Number.
- MAC Address.
- Software Version.
- Disk Size.

About

The About command provides information about the Version number of the Software.

Figure 58. The about window



Access to the Windows System Info command is also available in this window. Extensive System information can be retrieved with this command.

Using WaveStudio

WaveStudio is an image enhancement program designed specifically for use with WaveReader. WaveStudio allows the user to capture and save images. WaveStudio also allows the user to increase or decrease contrast, zoom, sharpen lines, enhance sections of the picture, and bring out detail in dark areas.

Opening WaveStudio

From the Menu bar, select **File / Start Wavestudio** or click on the WaveStudio icon on the Icon Bar. The WaveStudio window will open. The WaveStudio window consists of two areas, the Main Viewing Area and the Toolbar.

WaveStudio Toolbar

All of the functions in WaveStudio are performed using the toolbar located on the left side of the WaveStudio window.

Figure 59. The WaveStudio toolbar



Intensity: Changes the overall brightness (intensity) of the image.

Contrast: Increases or decreases the contrast of the image.

H. Contrast: Increases or decreases the contrast of the image in a image, using a histogram to determine the median brightness.

This method finds the median brightness of the image; then brightens the pixels with values above the median and darkens the pixels with values below the median. This is more sophisticated (but slower) than the regular contrast method, which uses the middle possible value (128) rather than finding the actual median.

Hue: Changes the hue of colors in the image by rotating the color wheel. The user can rotate the color wheel in either direction. A 180-degree rotation in either direction changes each color to its complement. Positive rotation takes red toward green, green toward blue, and blue toward red. Negative rotation has the opposite effect.

Saturation: Negative values decrease the saturation of colors. Positive values increase the saturation. The saturation level is increased or decreased by a percentage of its present saturation level.

Sharpen: Increases or decreases the sharpness of the image. Negative values decrease the sharpness of the image. Specify -1000 for minimum sharpness. Positive values increase the sharpness. Specify +1000 for maximum sharpness.

Zoom: Clicking the In or Out button will cause the image to begin increasing or decreasing in size. Click the Stop button to stop the zooming. Click the Normal button to return the image to the original size.

Noise Removal: Changes the color of each pixel in the image to the average color of the pixels surrounding it. This results in a blur effect.

Histogram Equalization: Linearizes the number of pixels per gray area in the bit map. This can be used to bring out detail in the dark areas of an image.

Region Selection: Used to isolate sections of an image for enhancement. Select Rectangular to drag a box over the desired picture area. Select Freehand to draw borders around the desired area. Click On to activate this feature.

Copy & Paste: Use these buttons to copy images to or from the clipboard.

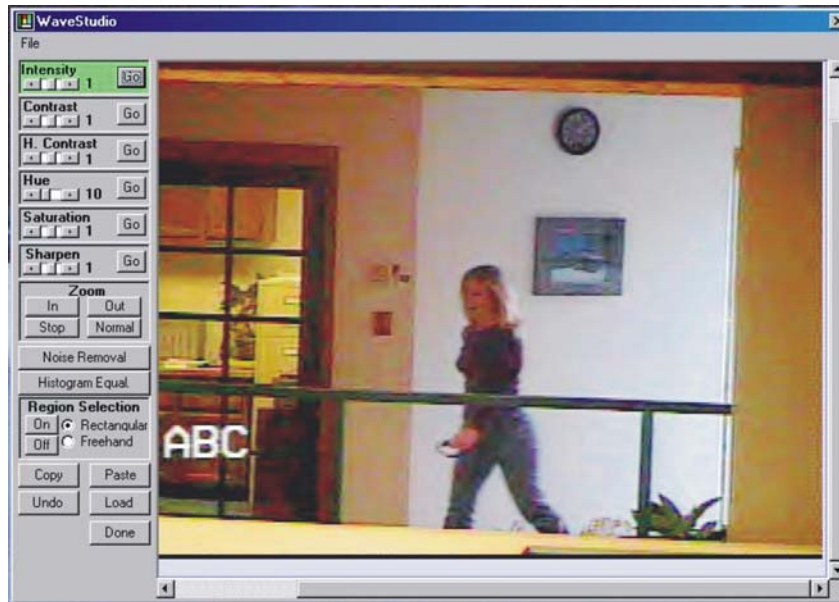
Undo: Click this button to undo all changes made to the image.

Done: Click on this button to close the WaveStudio program.

WaveStudio Main Viewing Area.

When WaveStudio is opened, it automatically captures the image currently displayed in the WaveReader Main Viewing Area.

Figure 60. WaveStudio main viewing area



Use the WaveReader window to find and pause the exact image you wish to edit.

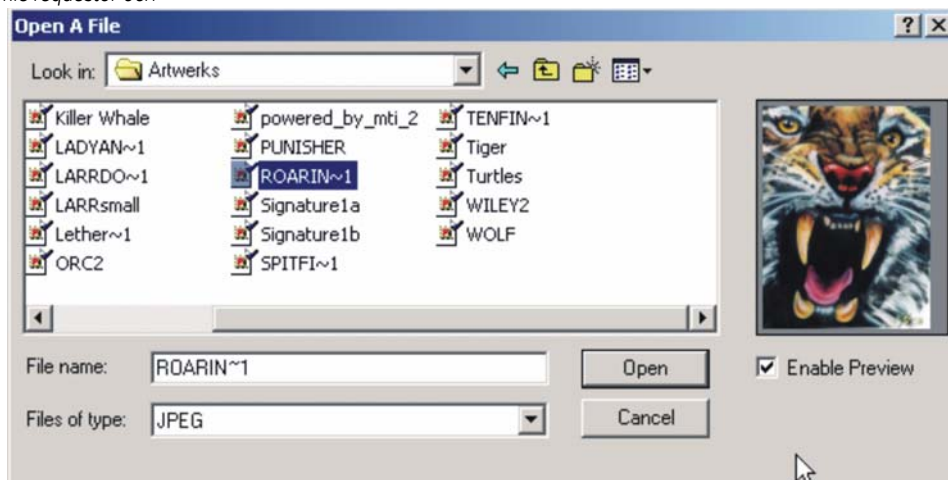
Press the Load button to insert the image into the Wavestudio's Main Viewing Area.

Any image size or screen configuration displayed in the WaveReader Main Viewing Area can be copied to the WaveStudio Main Viewing Area.

Opening a File in WaveStudio

To open a file in WaveStudio, select **File / Open** from the Menu bar. The open file requestor window will appear. Navigate to the file to edit, select the file and click the **open** button.

Figure 61. The open a file requestor box



Dome Pan/Tilt/Zoom Control

Entering PTZ Mode

WaveReader provides Pan/Tilt/Zoom capabilities. To access the PTZ controls from WaveReader, the following conditions must be met:

- WaveReader must be connected (via the ethernet or POTS) to a DVMRe capable of interpreting the PTZ commands.
- The DVMRe unit must be connected to a ProBridge PTZ controller. The DVMRe Triplex does not require a ProBridge PTZ controller.
- The cameras must be capable of performing PTZ.
- The WaveReader must establish a Normal connection, and must be in Live Look-in Mode.

Note: Modem connection for PTZ commands is not recommended. Due to bandwidth and typical phone line limitations of modem connections, PTZ functions may be very sluggish. If PTZ control via modem is required, we recommend that the **Go To Preset** command be used, rather than manual PTZ operation.

Panning And Tilting

To pan or tilt a camera:

Select the desired camera from the multiscreen by clicking on it.

Click and hold the cursor on the image. The square (shown here) will appear.

Figure 62. Mousetrak control box



Drag the mouse in the direction you wish to pan or tilt. A number from 1 to 10 will appear in the square, indicating the rate of pan or tilt (10 being the fastest).

Nudge

To nudge the camera position a single predefined increment, left click the mouse close to the image borders. Clicking on the left edge will nudge the camera to the left, etc.

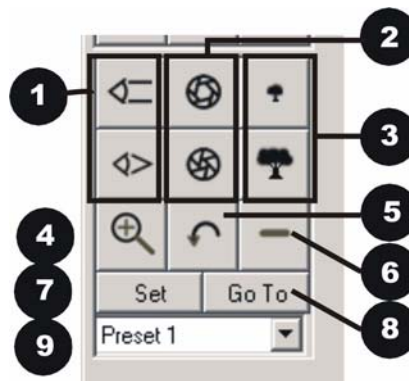
Auto-Center

Double clicking on the image will cause the camera to re-center the image at that location. Current zoom position is maintained.

Camera Controls

Once the above conditions have been met, the additional menu items (shown here) are added to the Main Window of the WaveReader.

Figure 63. Camera controls



1. Focus In & Out

Click and hold the Focus In & Out buttons to operate lens focus.

Shortcut: Holding down the Alt key and dragging the cursor up/down on-screen (as if you were tilting the camera) will operate the focus

2. Iris Open & Closed

Click and hold the Iris Open & Closed buttons to lighten or darken the image, and adjust for changing light conditions.

Shortcut: Holding down the Shift key and dragging the cursor up/down on screen (as if you were tilting the camera) will operate the iris control.

3. Zoom In & Out

Click and hold the Zoom In & Out buttons to operate the camera lens zoom.

Shortcut: Holding down the Control key and dragging the cursor up/down on screen (as if you were tilting the camera) will operate the zoom control.

4. Auto Zoom In

Click the Auto Zoom In button, then click and draw a rectangular window on the currently displayed image with the left mouse button. Once the button is released, the camera will automatically zooms to the drawn

window. If the window size is beyond the camera's zoom capabilities, the image will center on the middle of the defined window at the maximum zoom-in position.

5. Return - Previous

Click on this button to return the camera to the PTZ position that was selected prior to the last Auto Zoom In command

6. Zoom All

Click on this button to zoom all the way out on the currently selected camera.

7. Set Preset

Navigate the camera to the desired location, select the desired preset from the drop down list box, then click **Set**.

8. Go To

To send the camera to the desired preset, select the preset from the drop down list box, then click **Go To**.

9. Preset drop-down list

Select from previously created presets.

QuickWave Evidence Capture CD

WaveReader allows any PC user with a CD writer to create a portable evidence CD, which includes an auto-launching lite version of WaveReader called QuickWave. WaveReader does not need to be installed on the PC for QuickWave to operate, and QuickWave does not install itself (or a version of WaveReader) on the PC upon which it is being played-back. The program is loaded and played directly from the QuickWave CD.

The QuickWave CD cannot be played back on Windows 95 or Windows 98 Release Version 1.

Note: Live audio will not be recorded while archiving is in process.

Creating The QuickWave CD

1. Use the Disk Analysis Screen in WaveReader to select and save the desired video data as a 20d or 60d file.
2. Copy the 20d or 60d file (or files) to the C:\Program Files\WaveReader\QuickWaveCD\QuickWave folder.
3. Using the CD writer software, select **the contents** of the C:\Program Files\WaveReader\QuickWaveCD folder.

Note: Do not select **the QuickWave CD folder** to be written by the CD writer. Select **the contents of the QuickWaveCD folder** to be written by the CD writer.

4. Using the CD writer, create the QuickWave CD.
5. Test the CD by placing it in the CD drive of your computer. The QuickWave program should launch automatically, and begin playing the 20d file first, then a 60d file if one exists on the CD.

Note: When finished creating the QuickWave CD, delete the 20d or 60d file (or files) from the C:\Program Files\WaveReader\QuickWaveCD\QuickWave folder, so that it does not accidentally get copied onto a QuickWave CD (for which it was not intended) in the future.

Playing The QuickWave CD

1. Place the QuickWave CD in the CD drive of a PC.
2. The QuickWave program will launch from the CD and begin playing the 20d file first, then a 60d file if one exists on the CD.
3. QuickWave's operation is similar to that of WaveReader except for the fast forward and rewind buttons. These commands are not functional on these file types.
4. Select **File / Open** to playback a different 20d, or 60d file.

Creating a QuickWave CD using the CD Wizard

When WaveReader is running on a PC that has DirectCD® Version 3.0 or later installed, the Wizard can be used to automate the process of creating a QuickWave CD.

1. Select **File / Start QuickWave CD Wizard** from the menu to launch the Wizard. (If this menu item does not appear in the menus, then the DirectCD® could not be detected on the PC and the Wizard cannot be used.
2. The Wizard will guide you through the CD creation process.

SplitWave

SplitWave is a stand-alone program that is designed to split large 60d files into smaller files. The SplitWave installation program is located on the WaveReader CD in the SplitWave directory.

Installing SplitWave

Insert the WaveReader CD in the computer's CD-ROM drive. Cancel the WaveReader installation procedure if it is already installed.

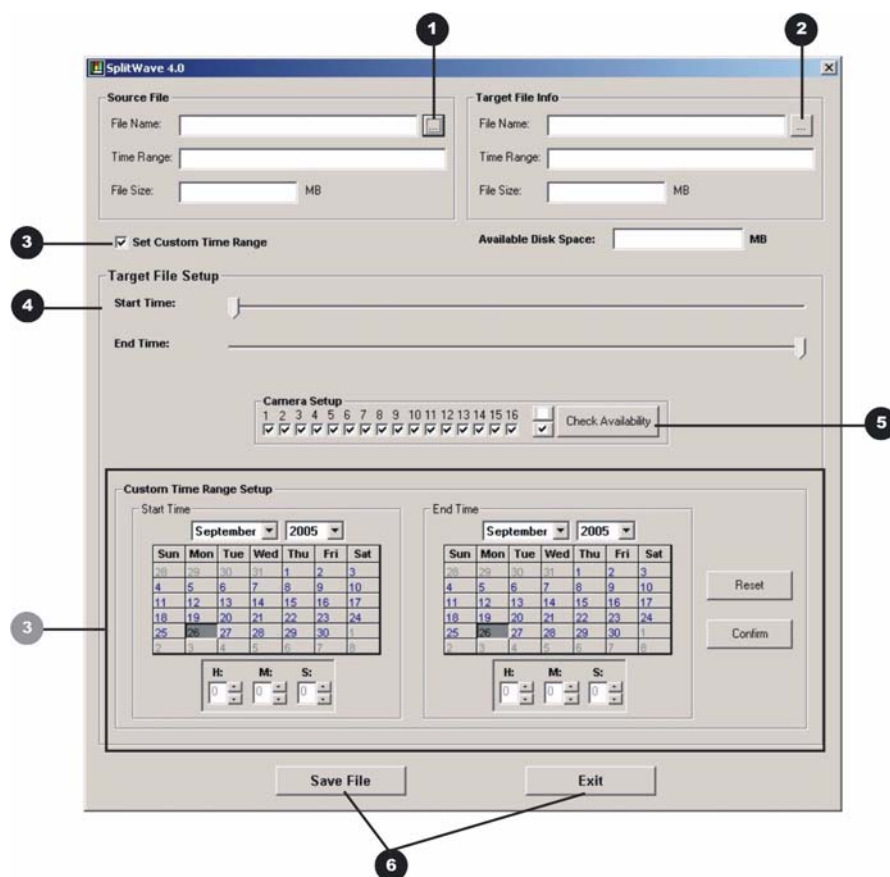
Use Windows Explorer to navigate to the SplitWave Folder.

Double-click on the Setup.exe file.

SplitWave Operation

Launch SplitWave by double-clicking on the SplitWave Desktop icon or choose **Programs** from the **Start** menu and then select **SplitWave**.

Figure 64. The SplitWave window



1. Click on the **Source File** radio button to navigate to the 60d file that you want to trim.

2. Click on the **Target File** radio button to navigate to the location of the new file.
3. Click in the **Set Custom Time Range** box to expand the screen to include **Start** and **End Time** selection parameters.
4. Use the Sliders to select the size of the new file.
5. Click on the **Check Availability** box to check the available cameras.
6. Click these buttons to **Save File**, or **Exit** the operation.

Contacting technical support

For assistance installing, operating, maintaining, and troubleshooting this product, refer to this document and any other documentation provided. If you still have questions, you may contact technical support and sales during normal business hours (Monday through Friday, excluding holidays, between 6 a.m. and 5 p.m. Pacific Time).

Table 2. Sales and support contact information

	Sales	Technical support
Phone:	800-469-1676	888-437-3287
E-mail	cvovideosales@ge.com	generaltech@ge.com
Fax	541-754-7162	541-752-9096 (available 24 hours a day)

Note: Be ready at the equipment before calling for technical support.

Online publication library

Another great resource for assistance with your GE Security products is our online publication library, available to all of our customers on our website. To access our publication library, go to our website at the following location:

<http://www.gesecurity.com>

In the **Tools** area at the top, click the *Publication Library* link then select *Video Surveillance*. After you register and log on, you may search through our online library for the documentation you need.¹

1. Many GE Security documents are provided as PDFs (portable document format). To read these documents, you will need Adobe Acrobat Reader, which can be downloaded free from Adobe's website at www.adobe.com.

