

Overview

The AL-1170 Wiegand interface module brings the power of your Alliance management system to Wiegand-based products. Whether adding Alliance capabilities to readers in an existing access control system or taking advantage of new products such as biometric devices, the AL-1170 incorporates Wiegand communications as part of your Alliance system.

The AL-1170 interface device provides a dedicated relay for access control applications, as well as a request-to-exit (RTE) input.

The unit provides a tamper switch, as well as LED indicators for communication between the device and the control panel.

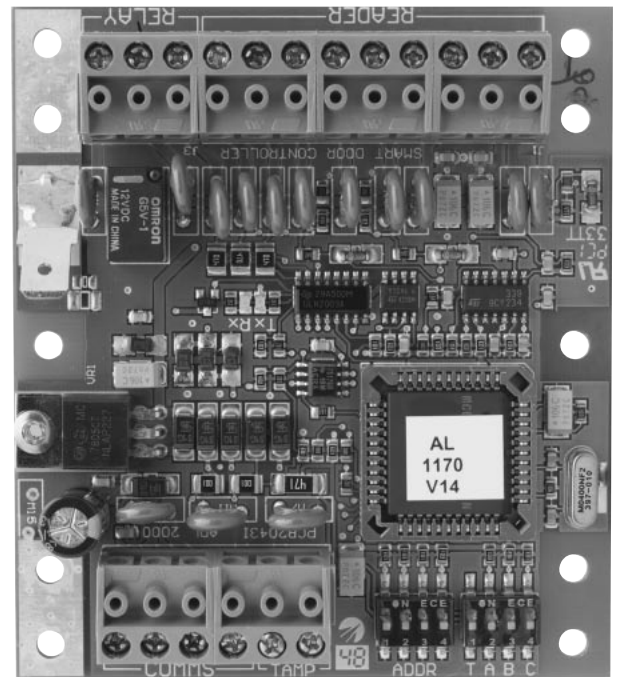
Onboard open collector outputs are used to control the reader LED, as well as sounding the beeper.

Features

- Request-to-exit (RTE) input
- Includes one relay for unlocking a door
- Integrated tamper detection
- Provides reader LED control

AL-1170

Alliance Wiegand interface



Americas
T 503 885 5700
T 888-GE-SECURITY
(437 3287)
F 800 483 2495

Canada
T 519 376 2430
F 519 376 7258

Asia
T 852 2907 8108
F 852 2142 5063

Australia
T 61 3 9259 4700
F 61 3 9259 4799

Europe
T 32 2 725 11 20
F 32 2 721 86 13

Latin America
T 305 593 4301
F 305 267 4300

info@gesecurity.com
www.gesecurity.com

© 2007 General Electric Company
All Rights Reserved

Specifications

Electrical	Power supply: Panel bus (9 to 14 VDC) Current consumption: 75 mA (without reader)
Features	Request to exit input: 1 Relay output: 1
Environmental	Operating temperature: 32 to 122°F (0 to 50°C)
Physical	Dimensions, PCB: 3.14 x 3.54 in. (80 x 90 mm) Max. distance from panel: 5,000 ft. (1,500 m) No enclosure
Regulatory	UL/FCC, UL294, UL365, UL609, UL1610, UL1635

Ordering information

AL-1170	Wiegand interface
AL-1410	Magstripe reader
AL-1420	HID ProxPoint reader
AL-1440	HID ProxCARD II (50 pack)



imagination at work