



# **ATM Interface Option Installation and Set Up**

V1.1



# Contents

<b>Introduction</b> .....	<b>1</b>
<b>ComTools Software -- Installation and Set Up</b> .....	<b>1</b>
<b>ATM Interface Option -- Installation</b> .....	<b>1</b>
<b>ATM Interface Option -- Set Up</b> .....	<b>2</b>
NetVision Configuration in Control Panel .....	2
Camera and Recording Set Up .....	3
Event Server Module -- Text Overlay, etc. ....	5
Event Server Login .....	5
Text Overlay Format .....	6
ATM Self-Housekeeping .....	6
Associate Cameras with ATM Machines (COM Ports) .....	7
<b>ComTools Set Up -- Final Step</b> .....	<b>8</b>
<b>Network 'Ports' that Must be Available</b> .....	<b>10</b>

## Copyrights and Trademarks

- ™ NetVision is a trademark of  
CSG Security Inc./Sécurité CSG Inc.
- ™ Pentium is a trademark of Intel Corporation
- ™ © Microsoft, Windows, Windows Me, Windows  
2000, and Windows XP are trademarks or  
registered trademarks of the Microsoft  
Corporation.

© Copyright 2005 CSG Security Inc./Sécurité  
CSG Inc. All rights reserved.

## Disclaimer

All software, firmware, drawings, diagrams, specifications, catalogues, literature, manuals and other supplied materials shall constitute the proprietary information of the manufacturer. In the interests of ongoing improvement in quality and design, we reserve the right to change product specifications without prior notification.

**Attention:** Physical alteration of hardware components or removal of electrical devices may void warranties, and/or affect radio-frequency and electromagnetic emissions.

This document is not to be copied, de-compiled, or re-distributed in any form without prior written consent.

© Copyright 2005 CSG Security Inc./Sécurité  
CSG Inc.

# Introduction

This document describes how to install and set up NetVision's ATM interface option.

The ATM Interface includes a hardware interface and additional software that may be added to a standard NetVision DVR (digital video recorder) to allow capturing user specified ATM transaction data and overlaying this onto video images.

Each ATM machine on the banking network is interfaced to the capture station PC using a special interface cable connected to a dedicated serial (COM) port on a capture station PC (up to 16 per capture station, provided enough dedicated serial ports are available).

## ComTools Software -- Installation and Set Up

The ATM interface option includes separate "ComTools" software that should be installed first, and set up to work with the ATM network data. This is covered separately in a document provided with the ComTools software. Exception: Some final necessary settings are provided at the end of this document.

**Notice:** Ensure the ComTools software is receiving data from the ATM network before proceeding.

## ATM Interface Option -- Installation

Ordinarily, this option is factory installed. If the ATM Interface has not already been installed, locate it on the CD provided and install it, responding appropriately to any prompts that appear.

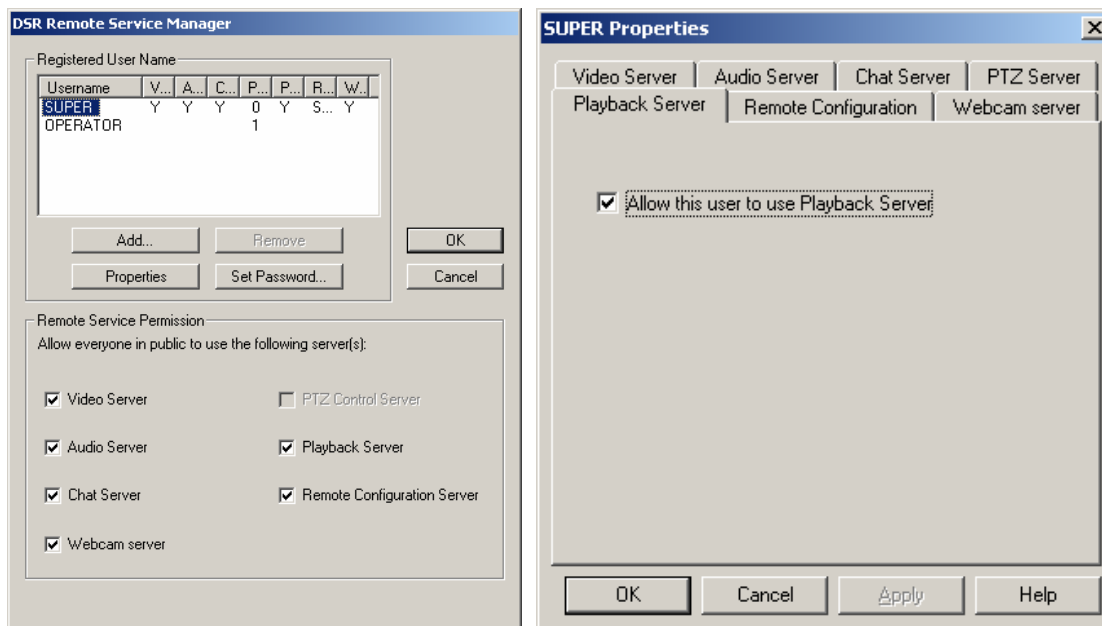
# ATM Interface Option -- Set Up

## NetVision Configuration in Control Panel

Note: This requires the "Super" login.

With the NetVision software shut down, go the Windows Control Panel, double-click **DSR Configuration**, and login as "Super" when prompted.

Then, select **Remote Service Manager**, and ensure the desired ATM users have been set up (requires only authority to use the playback server). **Tip:** Authorities are defined through the **[Properties]** button.

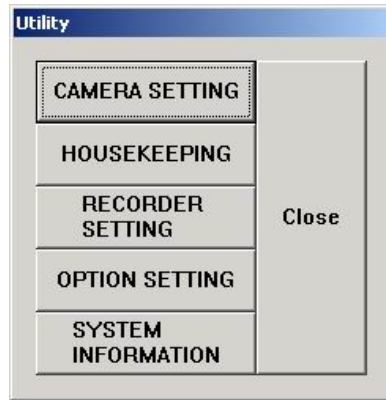


Once the necessary authorities have been selected, click **[OK]** as necessary, and then close the Windows Control Panel.

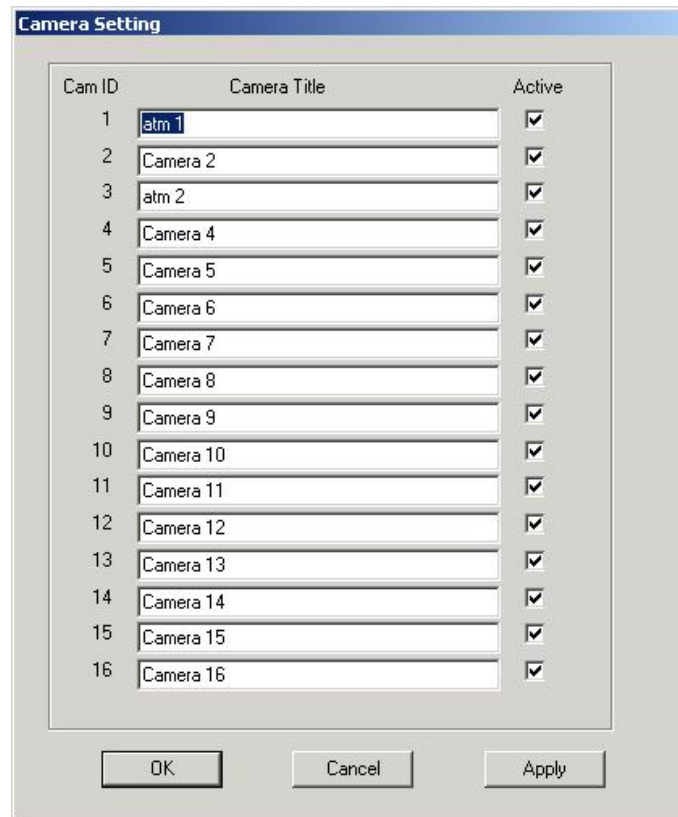
## Camera and Recording Set Up

To allow proper recording when ATM transactions occur, the camera(s) and recording parameters must be set up. First, start up the NetVision software and log in. Then, set up the camera(s) and recording parameters as follows:

- 1) Provide suitable names for the ATM Camera(s). Click the **[Utility]** button near the bottom-right corner of the desktop. Then, select **[Camera Setting]**.

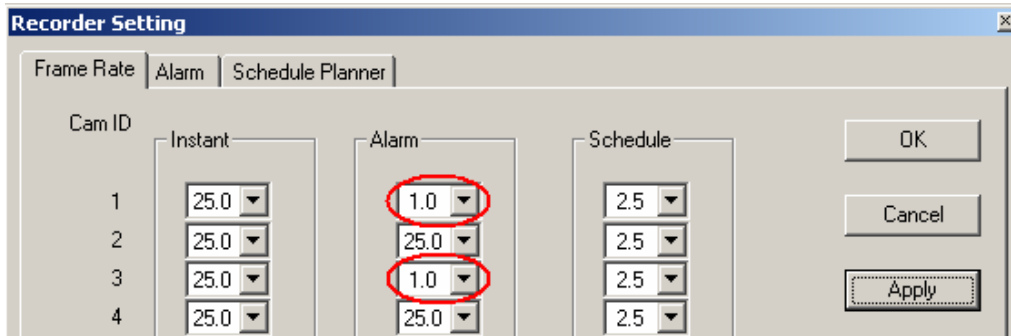


- 2) Enter camera title of the ATM camera(s) in the Camera setting table, using the following as an example. **Notice:** Be sure to activate **only** the cameras that will be in use (i.e., connected).  
**Tip:** When naming ATM cameras, it is useful to include the ATM ID-number.

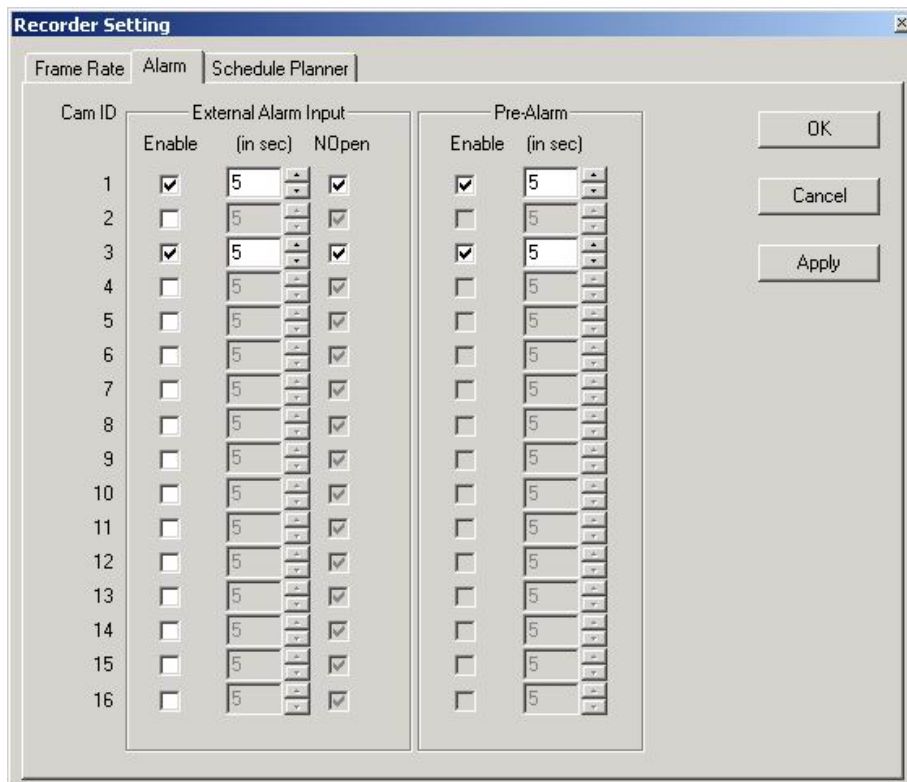


When finished, click **[OK]**.

- 3) From the Utility menu, select **[Recorder Setting]**, and adjust the **Frame Rate** for the ATM camera(s) to 1 frame per second:



- 4) Now select **Alarm** at the top, and set/enable the ATM camera(s) for **External Alarm Input** and **Pre-Alarm** recording as shown. **Tips:** This is automatically tied to the ComTools software to have the ATM cameras record when ATM transaction occur. Pre-alarm recording maintains an ongoing recording of just before the camera was activated.



When finished, click **[OK]**.



## Event Server Module -- Text Overlay, etc.

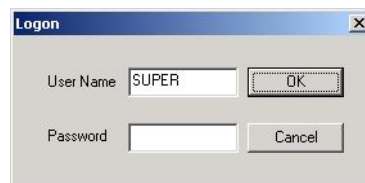
The Event Server is the interface between NetVision and ComTools. Once the ATM Interface software has been installed, the Event Server icon will appear in the system tray of the task bar:

### Event Server Login

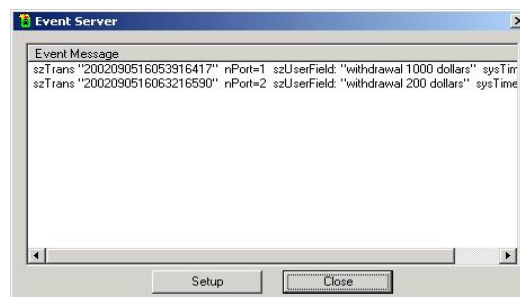
Right click the Event Server icon, and select **Restore** from the pop-up menu. **Tip:** To identify the Event Server in the system tray, hover your mouse cursor slowly over the various icons until you see "Event Server".



Then, login as "Super" when prompted, and click **[OK]**.



Once you have logged in, the Event Server screen will appear, showing the communications between NetVision and the ComTools software:



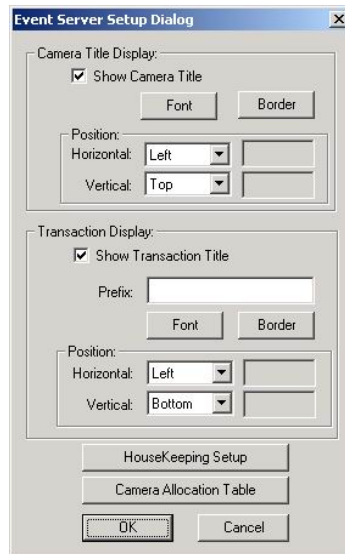
**Tip:** If this screen does not appear when NetVision is running, it may simply be hidden behind a video playback screen. (Ensure all video playback windows are closed.)

Additional settings are provided through the **[Setup]** button.

## Text Overlay Format

The Event Server module also controls the format of the text overlay onto the image, and will place a new entry to the database correspondingly.

Click **[Setup]** at the bottom of the Event Server window to configure the ATM transaction data overlay for ATM camera(s):



When finished, set up the additional items as described below.

## ATM Self-Housekeeping

ATM self-housekeeping automatically deletes ATM recordings that are older than a specified number of days. This stops the drive media from being filled with unneeded ATM recordings.

Select **[Housekeeping Setup]** near the bottom of the Event Server set-up screen, and enter your desired settings. When finished, click **[OK]**.



**Note:** This is the only way to delete recordings pertaining to ATM transactions.

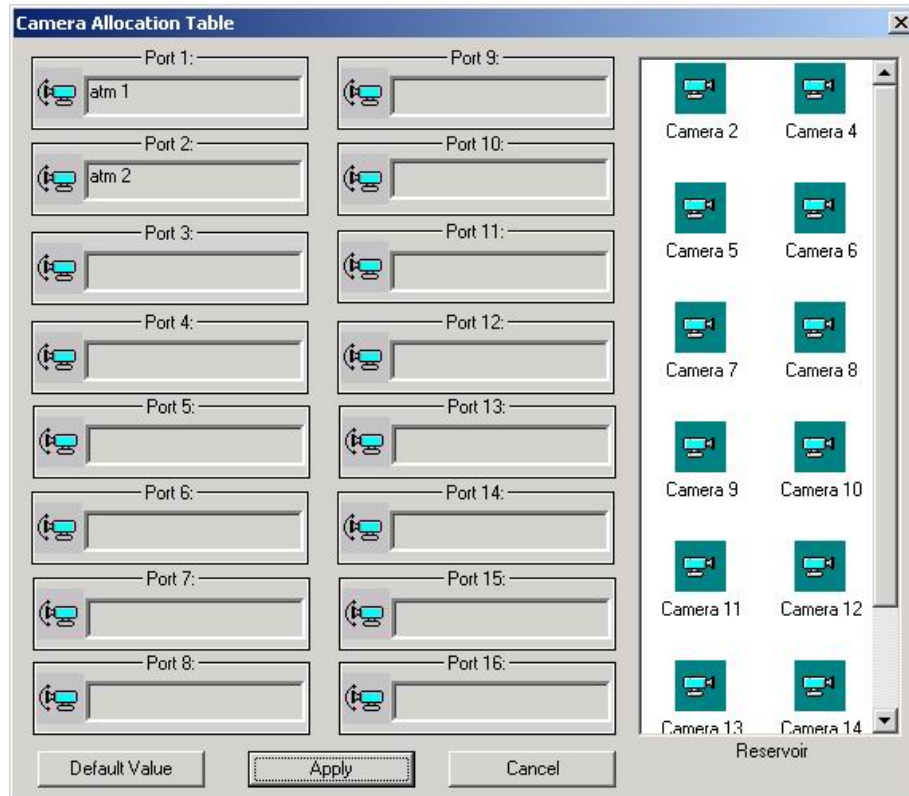
**Tip:** You can block individual ATM recordings from being deleted.

Related Topics: [NetVision On-line help: Search for "Protect/Unprotect"](#); [NetVision User's Guide: See section 26.6.](#)

## Associate Cameras with ATM Machines (COM Ports)

The ATM Interface will support up to 16 cameras in this mode, providing a dedicated serial port is available for each ATM machine. The Camera Allocation Table identifies the NetVision camera to be associated with each COM port (ATM machine).

To configure the table, simply drag and drop the cameras as needed between the 'reservoir' on the right, and the associated COM ports on the left.

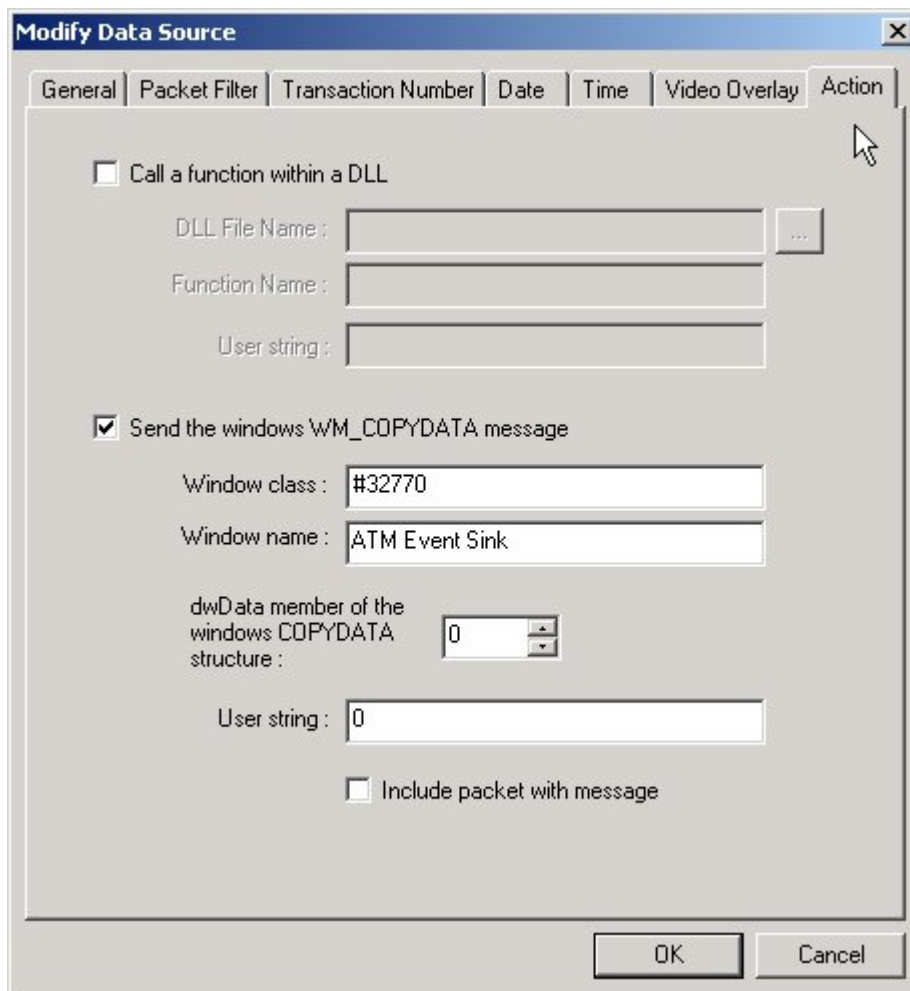


When finished, click **[Apply]**.

# ComTools Set Up – Final Step

The final step is to ensure that ComTools and Event Server communicate as tasks on the computer and exchange the correct information. Assuming that ComTools has already been configured to capture the information required for the overlay, this final step tells ComTools how to transmit this information to NetVision.

From within ComTools, select the **Modify Data Source** screen, and select the **Action** tab:



1. Enable “Send the windows WM\_COPYDATA message”
2. Enter Window class: **#327700**
3. Enter Window name: **ATM Event Sink**

4. For **IP Installations** the user string option must be set to emulate the correct serial port settings as follows:-

0 = Port 1

1 = Port 2

2 = Port 3

3 = Port 4

etc.....

# Network 'Ports' that Must be Available

You must ensure that either TCP/IP filtering is turned off, OR that specific ports are available for use by NetVision and the ATM Interface Option. Check with your network administrator to ensure the following ports are available:

Server / Feature	TCP Port Needed	UDP Port Needed
HTTP server (default is 8080; MUST change to: ⇨)	80	-
Video Server	1999	-
Chat Server	5001	-
Audio Server	5002	-
Alarm Alert Caller	9002	-
DSR Relay Server	10327	-
DSR Remote Playback Server	10328	-
SearchEngine Server (Playback + ATM Option)	10330	-
Motion Search Server (for playback)	10400	-
PTZ Server	16781	-
<b>Optional Items</b>		
--ATM Interface: (Event Server)	10329	-
--Site Watch	5763	Permit all
--Windows XP "Remote Desktop" Feature	3389	-

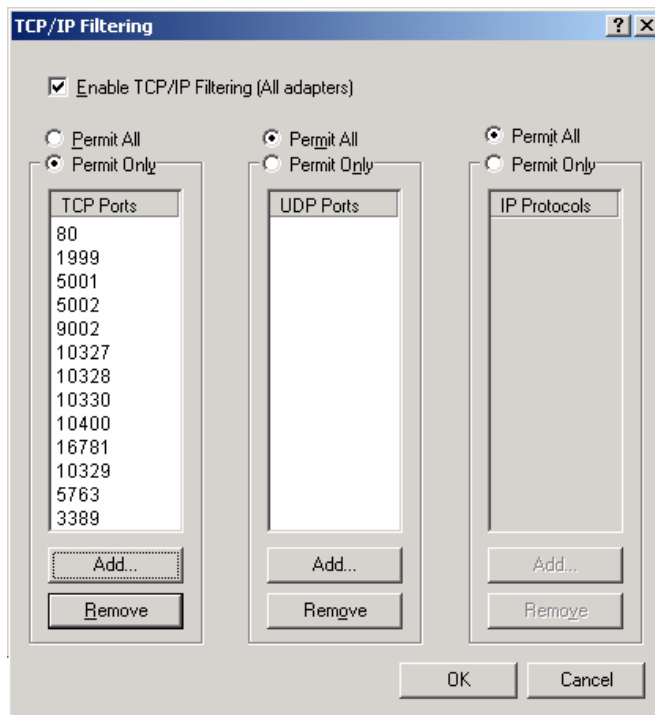
Take care to ensure **ALL** ports listed opposite are included. (Most may already be present.)  
Alternatively, you can set TCP/IP filtering as **disabled**. (See the note below.)

**Tip:** For "IP Protocols", select "Permit All". See the TCP/IP Filtering screen below, third column. **Note:** To provide better security for the NetVision capture station, the factory defaults include TCP/IP filtering = enabled, and only the non-optional ports indicated above are allowed (you can add more ports if needed). NetVision should also work fine with TCP/IP filtering disabled and all ports permitted, but that could leave the system vulnerable for hacker attacks and thus reduce overall security.

## How to enable TCP/IP filtering and disable file/printer sharing:

### Locator / Steps: (Capture Station running Windows XP)

Windows [Start] menu ⇨ Control Panel ⇨ Network Connections ⇨ right click "Local Area Connection" ⇨ select [Properties] ⇨ UN-check "File and Printer Sharing for Microsoft Networks" ⇨ select Internet Protocol (TCP/IP) ⇨ select [Properties] ⇨ (IP address) ⇨ (Subnet Mask) ⇨ select [Advanced] ⇨ select the Options tab ⇨ select TCP/IP filtering ⇨ select [Properties]. Then, make selections and [Add] ports as shown below:



When finished, click [OK] as needed to close all windows. Then, shut down and restart the PC.



