

IFS WMC303-1W-1T-1200 Quick Start Guide

Content

Package Contents	1
Physical Introduction	1
Hardware Installation	1
Wired Network Connection (Windows 7)	2
Web Management	3
Wireless Network Connection	3
More Information	4
Contact information	4

This is the *IFS WMC303-1W-1T-1200 Quick Start Guide*. This document provides basic instructions for installing and using the IFS WMC303-1W-1T-1200.

Package Contents

Thank you for choosing the IFS WMC303-1200. Before installing the AP, please verify the contents inside the box.

The WMC303-1200 should contain the following items in the package:

- The IFS WMC303-1W-1T-1200 x 1
- Quick Installation Guide x 1
- CD-ROM x1
- Mounting Bracket x 1
- Mounting kit x 1

If any item is found missing or damaged, please contact your local reseller for replacement.

Physical Introduction

Hardware Description



Reset: Press and hold the button for more than 10 seconds to reset to the factory default setting.

Hardware Installation

Follow the steps below to install the WMC303:

1. Drill the outlet hole as indicated on the mounting label and adhere the provided mounting label to the installation location to let the Ethernet cable penetrate the outlet hole. Then, drill the mounting holes as indicated on the label.



2. Take the mounting bracket, put it on the target area by aligning the holes and fix it with the supplied screws.



3. Plug the RJ-45 Ethernet cable into the PoE port of the WMC303-1200.



4. Load the device into the mounting bracket, and be sure the device is mated with two fixed screws. Then, rotate the device clockwise to lock it in position.



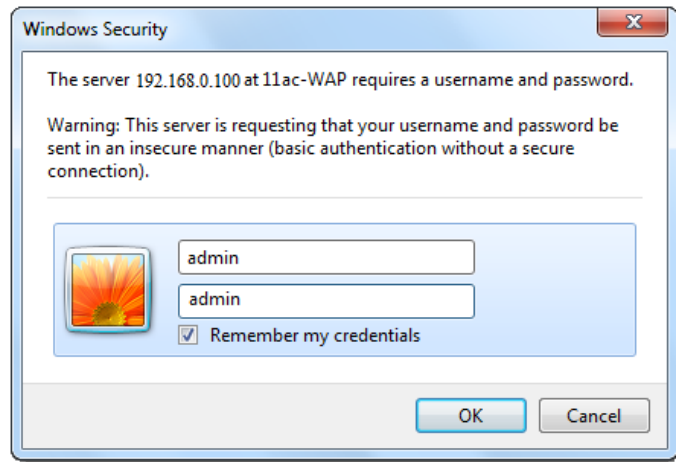
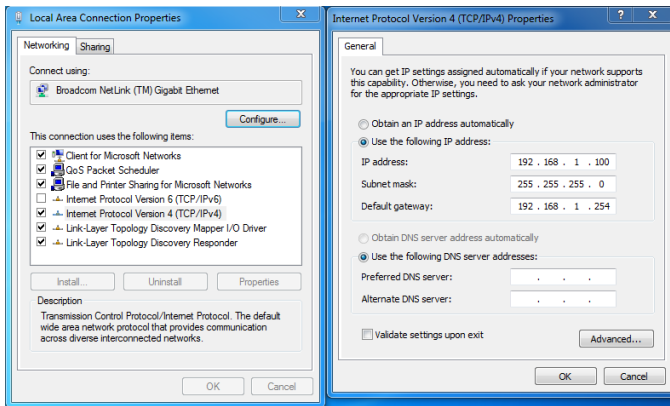
5. Plug the other end of the Ethernet cable into the PoE switch.



Wired Network Connection (Windows 7)

A computer with wired Ethernet connection is required for the first-time configuration of the Wireless AP.

1. Click "**Start**" button located at the lower-left corner of your computer.
2. Click "Control Panel".
3. Double click "Network and Sharing Center" icon.
4. Click "Change Adapter Settings".
5. Double click "Local Area Connection".
6. Select "Internet Protocol Version 4(TCP/IPv4)" and click "Properties".
7. Select "**Use the following IP address**" and then click "**OK**" button twice to save the configuration. For example, as the default IP address of the WMC303-1200 is 192.168.0.100 and the router is 192.168.0.254, you may choose from 192.168.0.1 to 192.168.0.252.



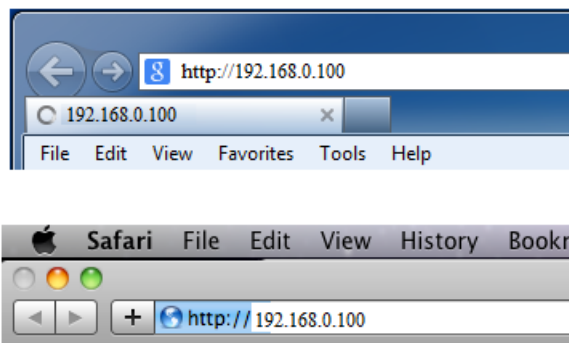
Web Management

Default Settings

- Default IP Address: **192.168.0.100**
- Default Username: **admin**
- Default Password: **admin**
- Default SSID (2.4GHz): **IFS AP 2.4G**
- Default SSID (5GHz): **IFS AP 5G**

The following steps show how to start up **Web Management** of the WMC303:

1. The Web management allows you to access and manage the Wireless AP easily. Launch the Web browser and enter the default IP address <http://192.168.0.100>.



2. When the login window pops up, please enter the User Name and Password. The default User Name and Password are both **“admin”**. Then click **OK** button to continue.

3. After you enter into the Web User Interface, go to **Setup Wizard** to configure your wireless network. For security reasons, strongly recommended to configure the Encryption Method and Passphrase of your wireless network.



Setup Wizard

The Wizard will guide you the through following steps. Begin by clicking on Next.

1. Setup LAN Interface
2. Choose your Time Zone
3. Wireless LAN Setting
4. Wireless Security Setting

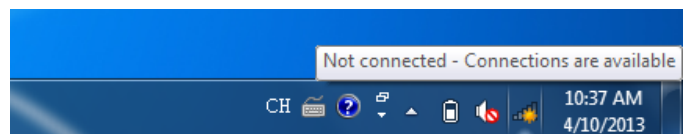
Next>>

4. Once the basic configuration of the WMC303-1200 is done, click **“Finished”** button to make the change take effect.

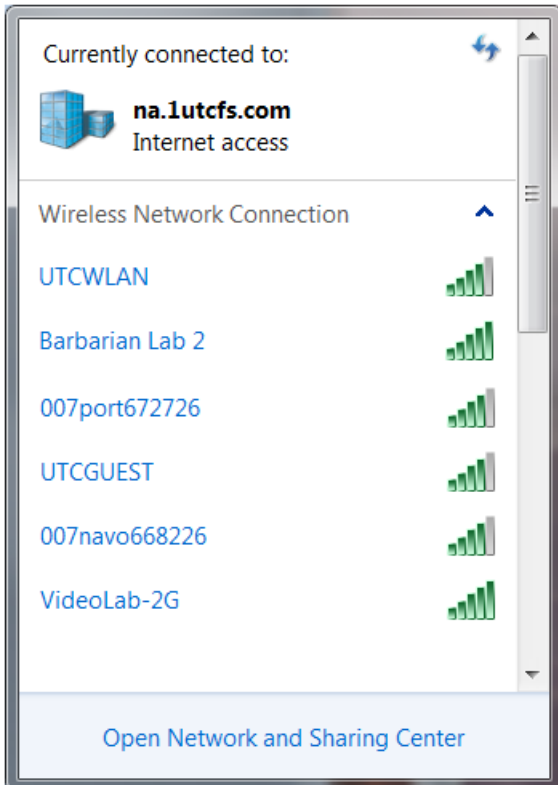
Wireless Network Connection

Follow the steps below to connect to a wireless network:

1. Right-click on the network icon displayed in the system tray.



2. Highlight the wireless network (SSID) to connect and click [Connect] button.



3. Enter the encryption key of the WMC303-1200 if necessary.

You have finished the configuration of the WMC303-1200. Now you can use your iPhone, iPad, laptop, and any other Wi-Fi device to connect with it wirelessly and start surfing the internet.

More Information

The above steps introduce simple installations and configurations for the WMC303-1200. For further configurations of LAN, Wireless, Access Control, etc, please refer to the user's manual in the CD. If you have further questions, please contact the local dealer or distributor where you purchased this product.

Contact information

www.interlogix.com or www.utcfssecurityproducts.eu.

For customer support, see www.interlogix.com/customer-support.

© 2015 United Technologies Corporation

Interlogix is part of UTC Climate Controls & Security, a unit of United Technologies Corporation. All rights reserved.